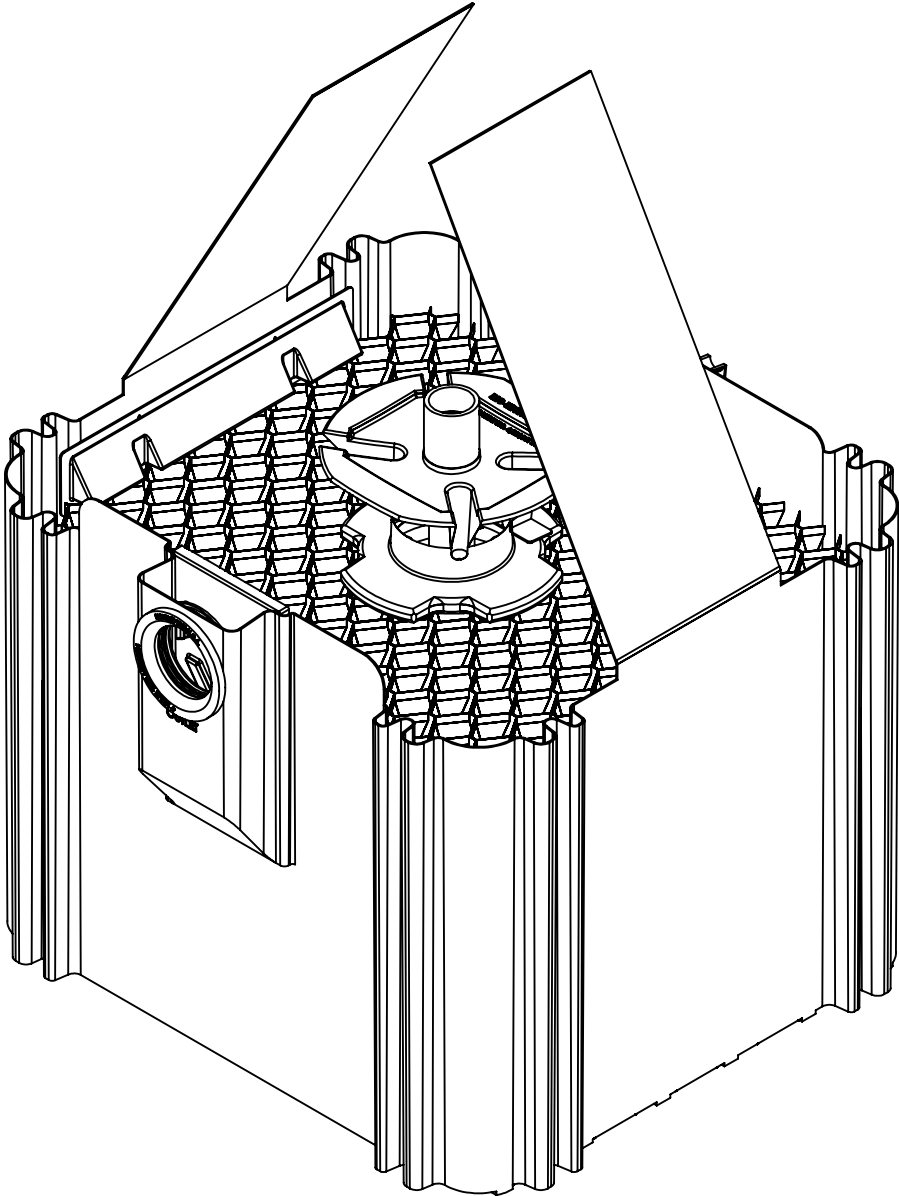

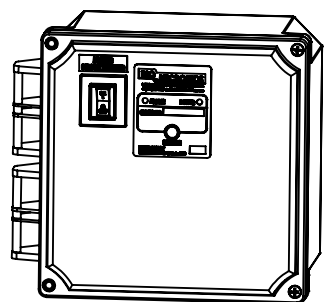
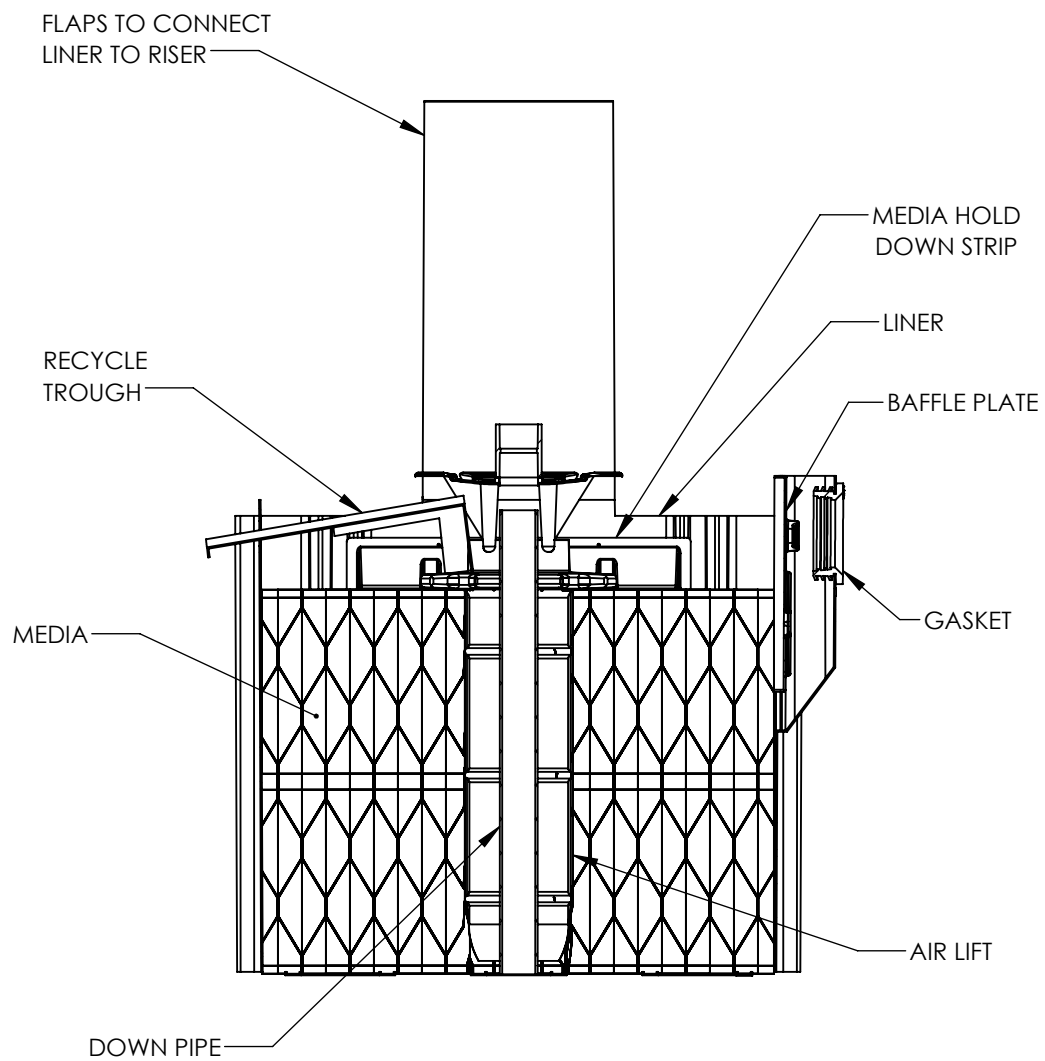


REVISIONS		
REV.	DESCRIPTION	DATE
A	UPDATED TO CURRENT	9/29/2025

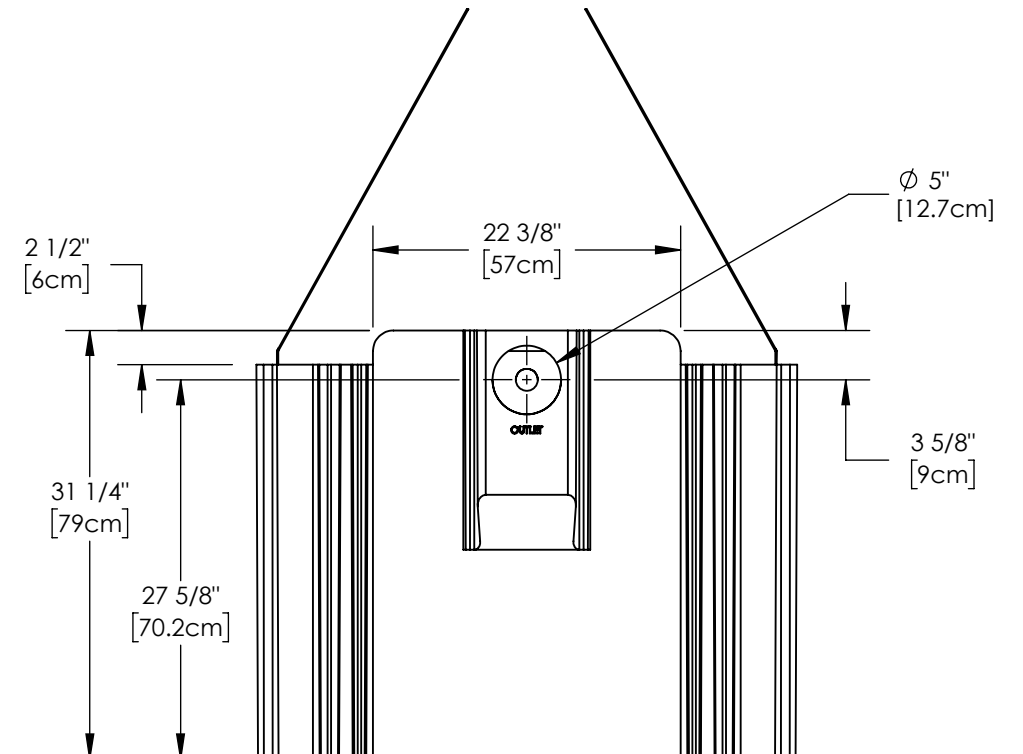
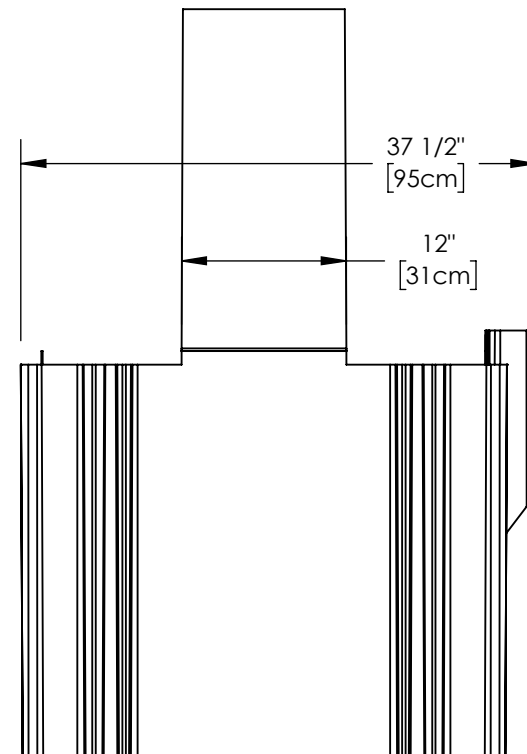
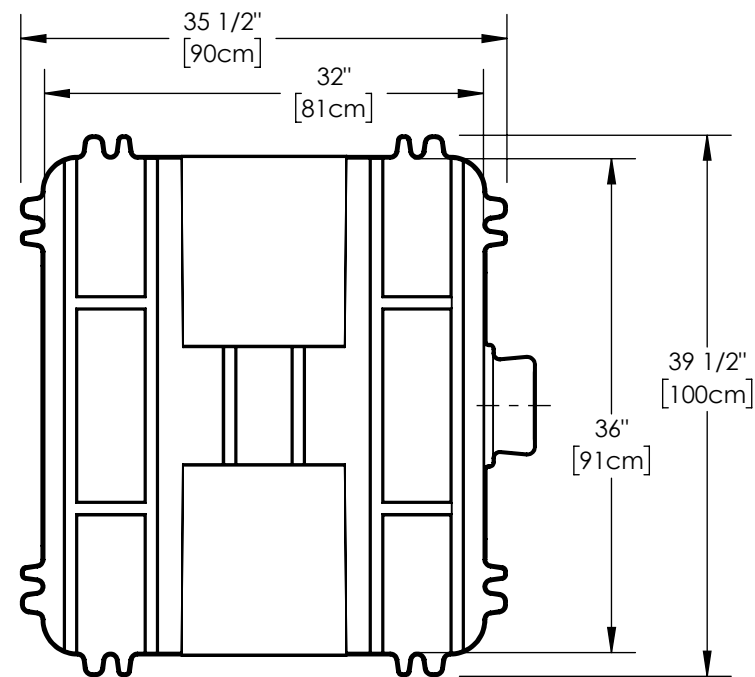


MicroFAST® Flex 0.5

<p><b>PROPRIETARY AND CONFIDENTIAL</b></p> <p>THE INFORMATION CONTAINED IN THIS DRAWING IS THE SOLE PROPERTY OF BIO-MICROBICS, INC., ANY REPRODUCTION IN PART OR AS A WHOLE WITHOUT THE WRITTEN PERMISSION OF BIO-MICROBICS, INC. IS PROHIBITED.</p> <p>DO NOT SCALE DRAWING</p>		<p>UNLESS OTHERWISE SPECIFIED</p> <p>DIMENSIONS ARE IN INCHES AND</p> <p>TOLERANCES ARE AS FOLLOWS</p> <p>X° ±1°</p> <p>.X ± .50</p> <p>.XX ± .25</p>			
		<p>DRAWN BY:</p> <p>SRS</p>			
		<p>SHEET 1 OF 5</p>		<p>DATE:</p> <p>09/29/2025</p>	
<p>APPROVED BY:</p> <p>MSH</p>					
<p>SCALE: N/A</p>				<p>APPROVED BY DATE:</p> <p>09/29/2025</p>	
<p>SIZE: B</p>				<p>REV</p> <p>A</p>	




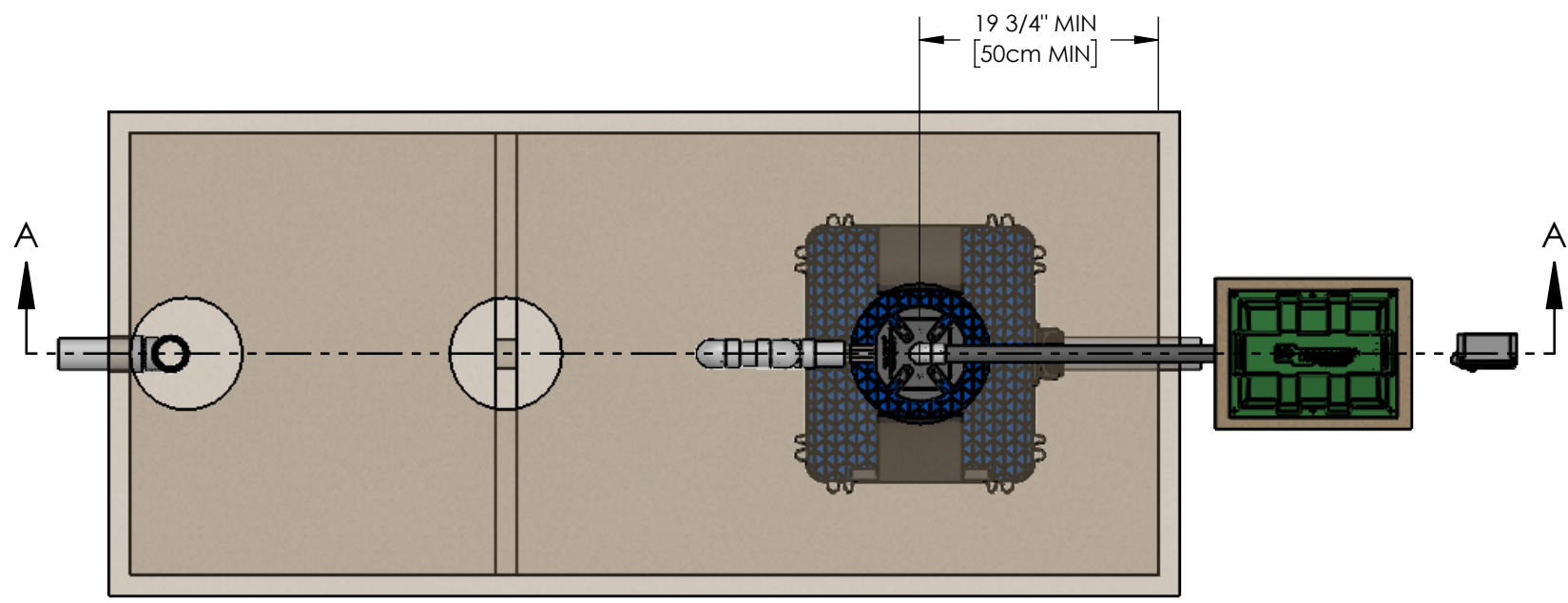
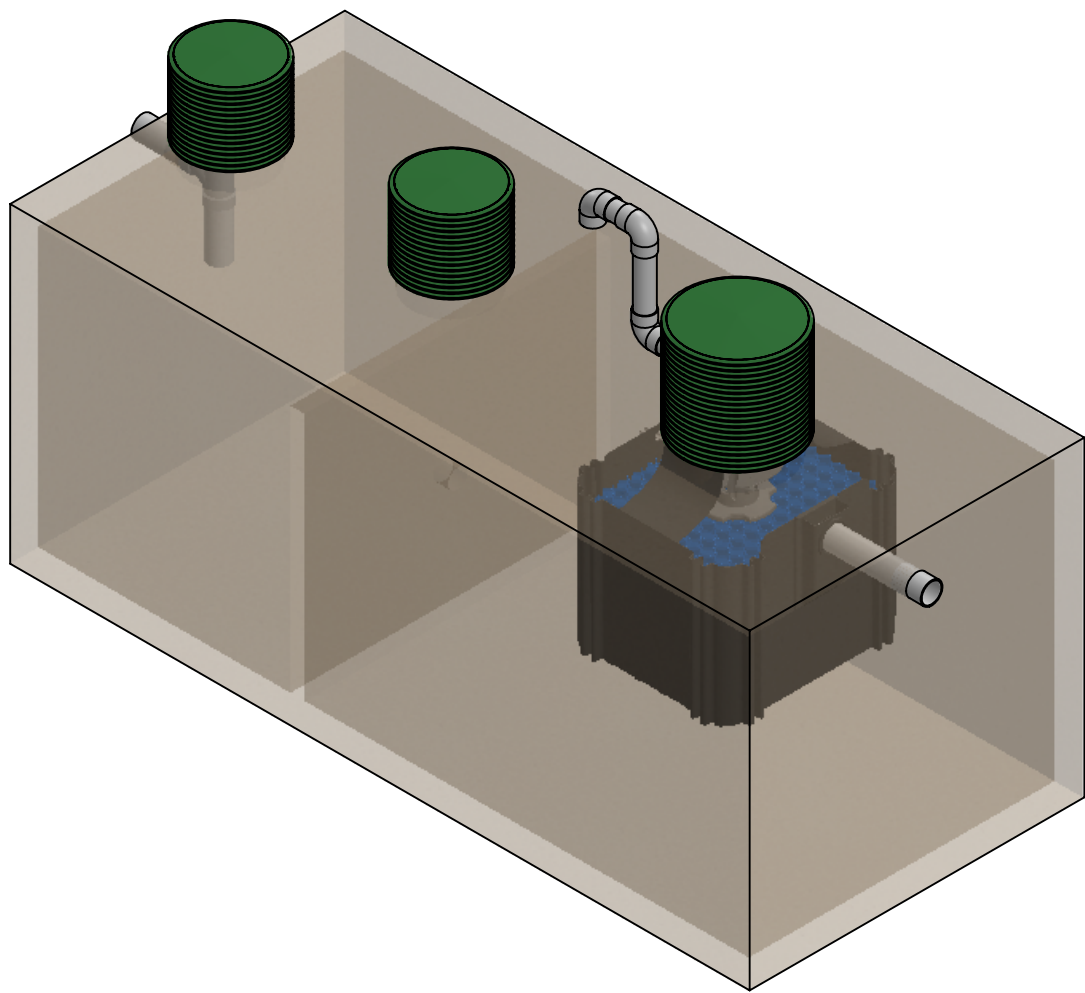
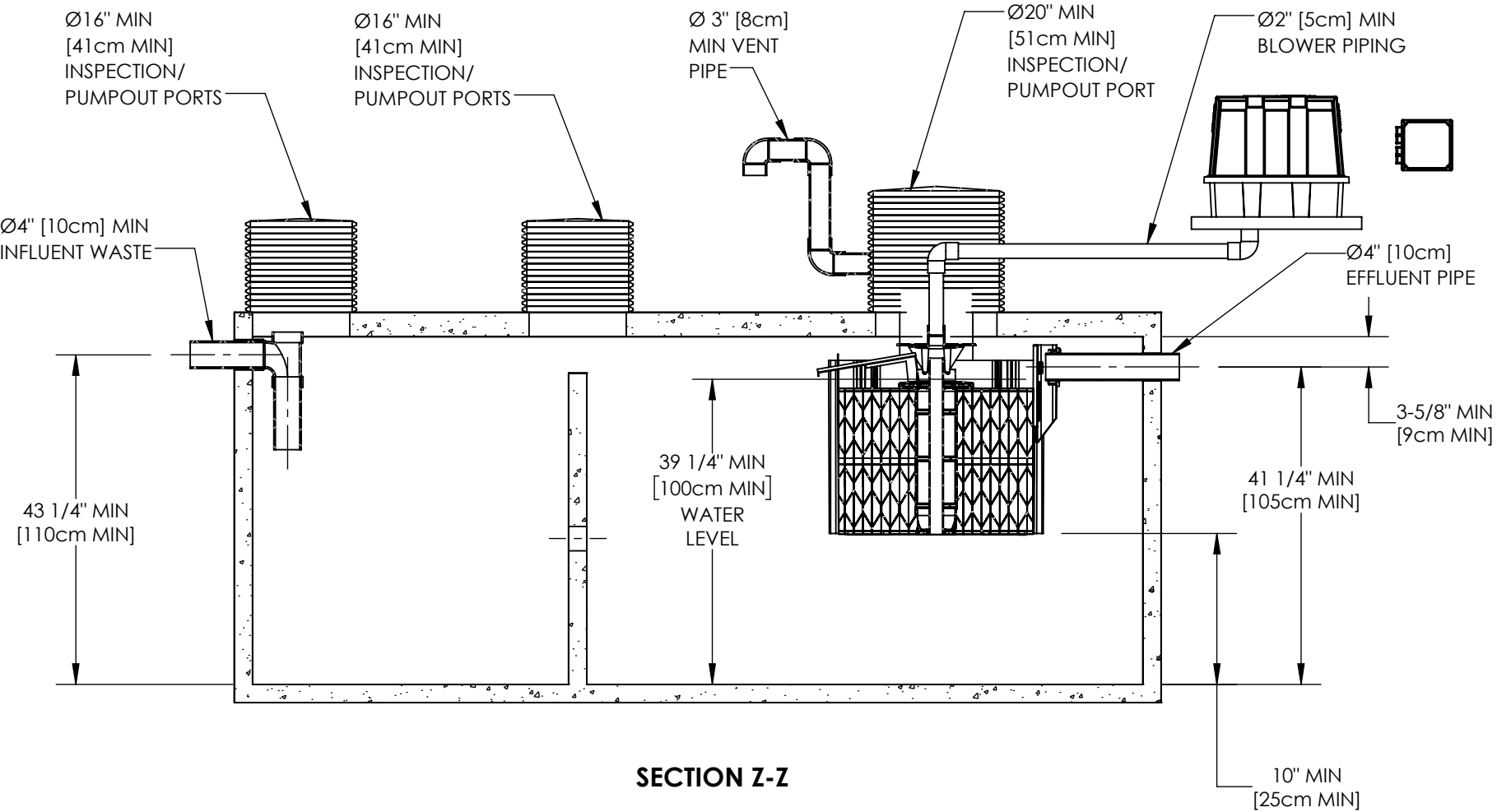
CONTROL PANEL




NOTES:

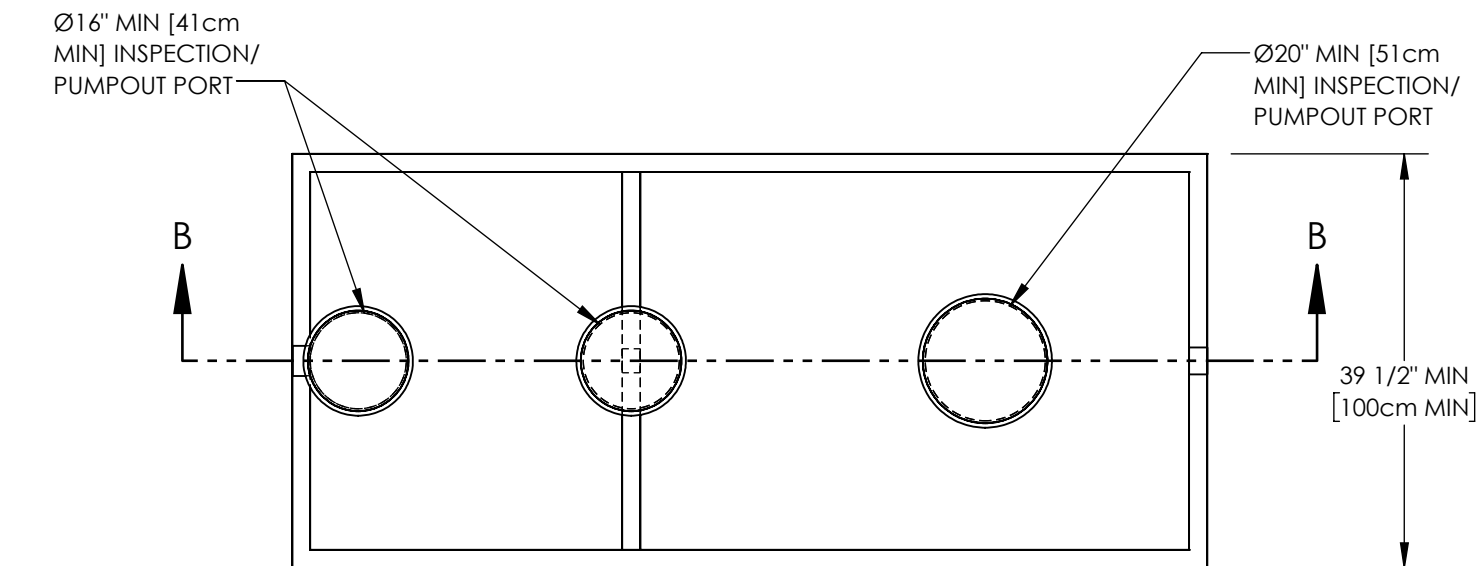
- ITEMS ARE DEPICTIONS AND MAY VARY IN APPEARANCE.

<div>PROPRIETARY AND CONFIDENTIAL</div> <div>THE INFORMATION CONTAINED IN THIS DRAWING IS THE SOLE PROPERTY OF BIO-MICROBICS, INC.. ANY REPRODUCTION IN PART OR AS A WHOLE WITHOUT THE WRITTEN PERMISSION OF BIO-MICROBICS, INC. IS PROHIBITED.</div> <div>DO NOT SCALE DRAWING</div>		<div>UNLESS OTHERWISE SPECIFIED</div> <div>DIMENSIONS ARE IN INCHES AND TOLERANCES ARE AS FOLLOWS</div> <div>X° ±1°</div> <div>.X ± .50</div> <div>.XX ± .25</div>		<div></div> <div>BETTER WATER. BETTER WORLD.™</div>	
		<div>DRAWN BY:</div> <div>SRS</div>			
		<div>SHEET 2 OF 5</div>		<div>DATE:</div> <div>09/29/2025</div>	
<div>APPROVED BY:</div> <div>MSH</div>					
<div>SCALE:</div> <div>N/A</div>	<div>SIZE:</div> <div>B</div>	<div>APPROVED BY DATE:</div> <div>09/29/2025</div>		<div>PART NUMBER</div> <div>600-FINFMCF0.5</div>	<div>REV</div> <div>A</div>



- NOTES:**
1. AIRLINE PIPING TO FAST® SHOULD NOT EXCEED 100 FT (30M) TOTAL LENGTH AND SHOULD HAVE A MAXIMUM OF 4 ELBOWS IN THE PIPING SYSTEM. FOR DISTANCES GREATER THAN 100 FT (30M) CONSULT FACTORY.
  2. IF LESS THAN THE SPECIFIED MINIMUMS ARE CONSIDERED NECESSARY, CONSULT FACTORY FOR GUIDANCE.
  3. SPECIALIZED TREATMENT NEEDS MAY REQUIRE SPECIFIC FEATURES TO BE INCORPORATED INTO THE DESIGN. CONSULT FACTORY FOR GUIDANCE.
  4. SOME ITEMS REMOVED FOR CLARITY.
  5. MINIMUM OF 2in [5cm] INVERT IS NECESSARY BETWEEN THE INLET AND OUTLET OF EACH ZONE FOR GRAVITY FLOW SYSTEMS.

<p><b>PROPRIETARY AND CONFIDENTIAL</b></p> <p>THE INFORMATION CONTAINED IN THIS DRAWING IS THE SOLE PROPERTY OF BIO-MICROBICS, INC., ANY REPRODUCTION IN PART OR AS A WHOLE WITHOUT THE WRITTEN PERMISSION OF BIO-MICROBICS, INC. IS PROHIBITED.</p> <p>DO NOT SCALE DRAWING</p>		<p>UNLESS OTHERWISE SPECIFIED</p> <p>DIMENSIONS ARE IN INCHES AND TOLERANCES ARE AS FOLLOWS</p> <p>X° ±1°</p> <p>.X ± .50</p> <p>.XX ± .25</p>		 <p>BETTER WATER. BETTER WORLD.™</p>	
		<p>DRAWN BY:</p> <p>SRS</p>			
		<p>DATE:</p> <p>09/29/2025</p>			
<p>SHEET 3 OF 5</p>		<p>APPROVED BY:</p> <p>MSH</p>		<p>DESCRIPTION</p> <p>MicroFAST® Flex 0.5</p>	
<p>SCALE:</p> <p>1:26</p>	<p>SIZE:</p> <p>B</p>	<p>APPROVED BY DATE:</p> <p>09/29/2025</p>			

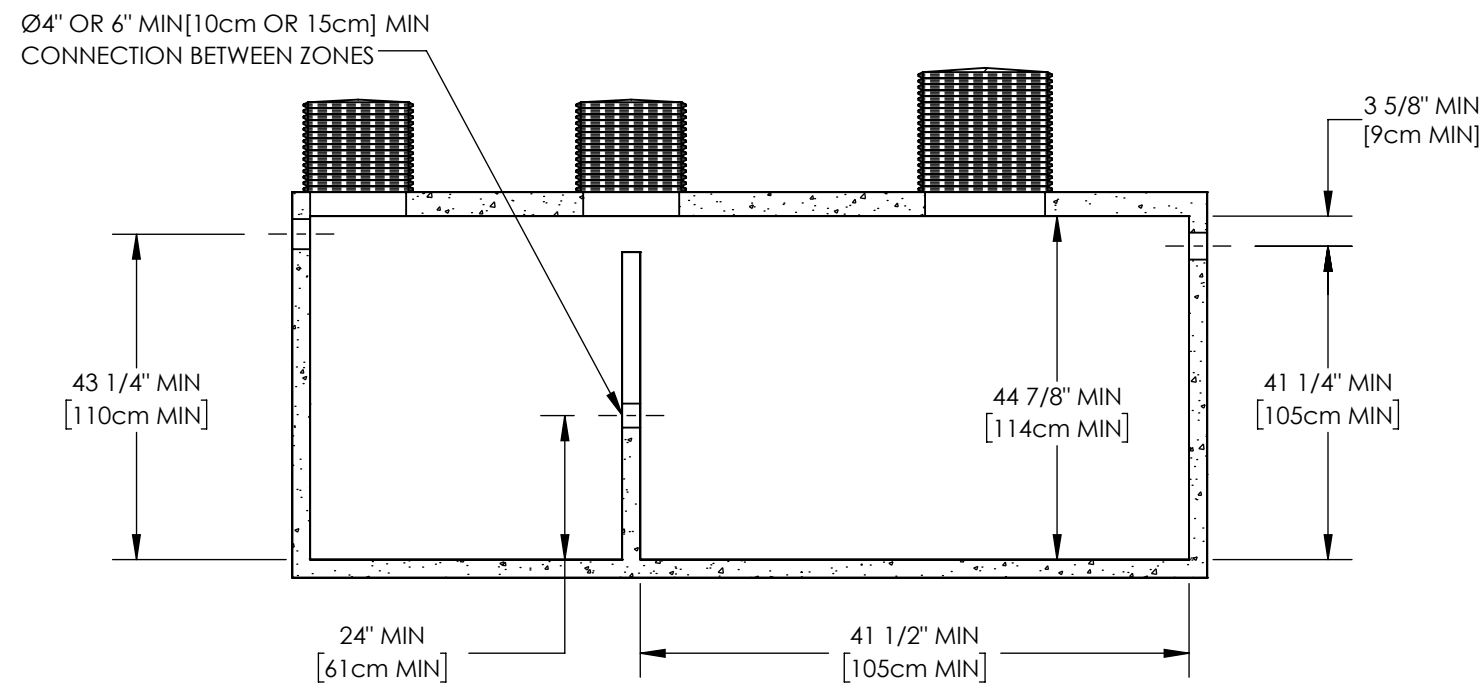


### SETTLING ZONE

350 GALLON MIN  
[1325 L MIN]

### TREATMENT ZONE

450 GALLON MIN  
[1703 L MIN]




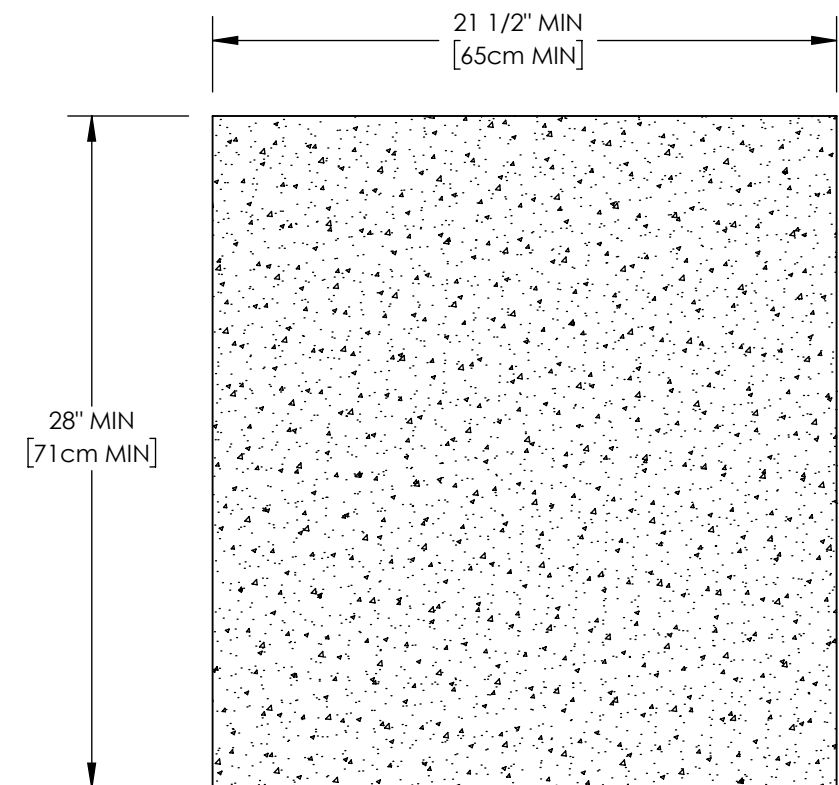
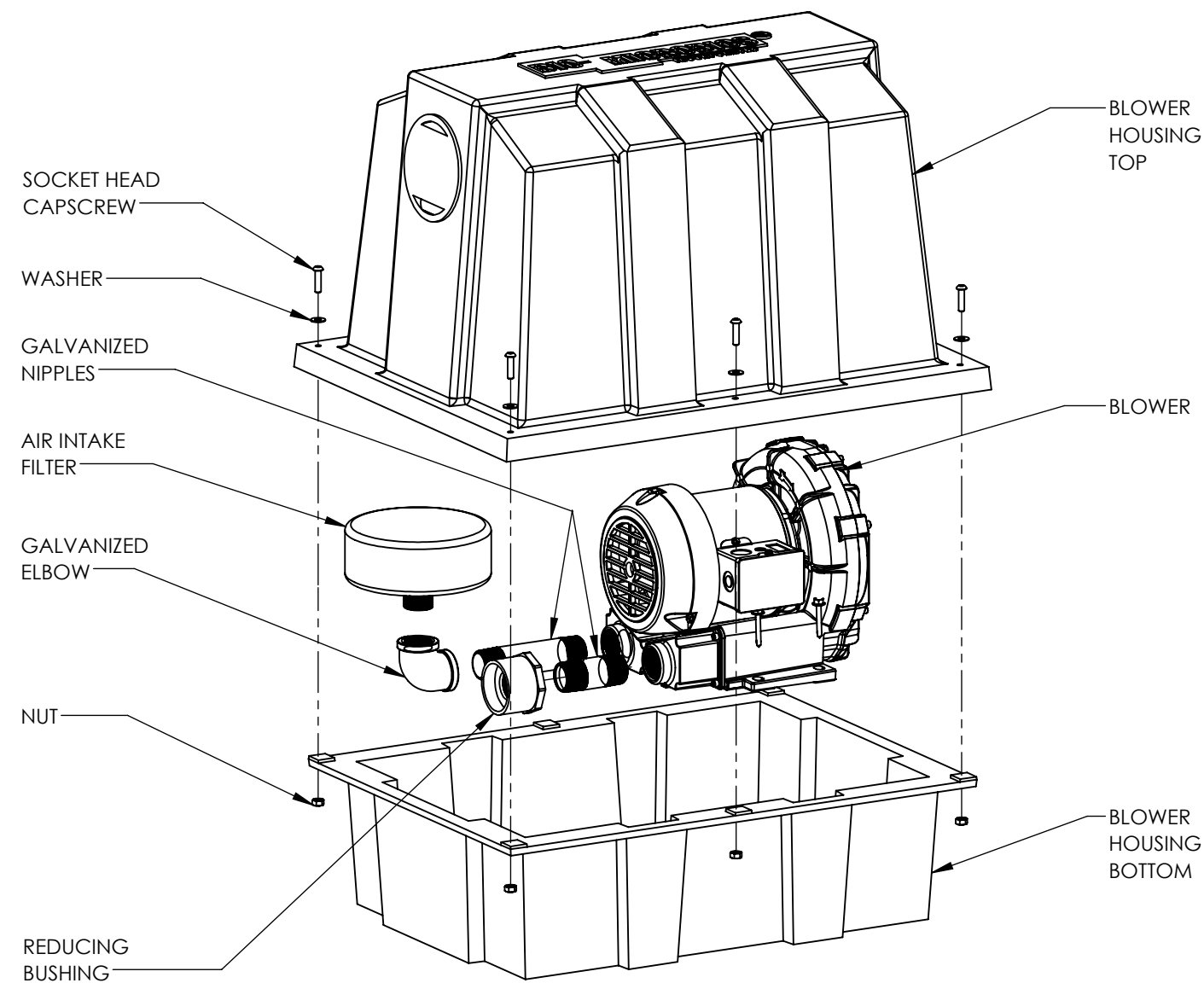
### SECTION B-B

#### NOTES:

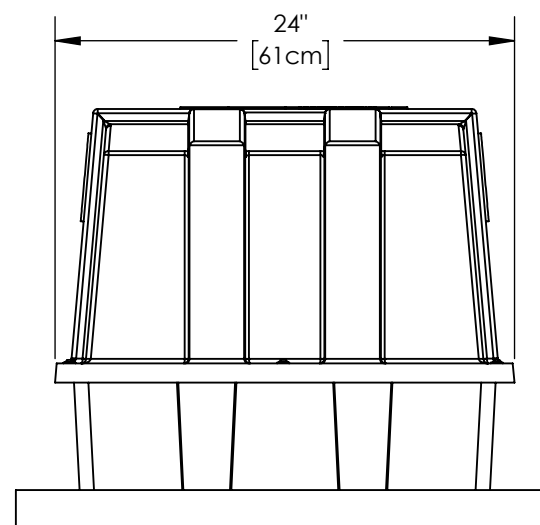
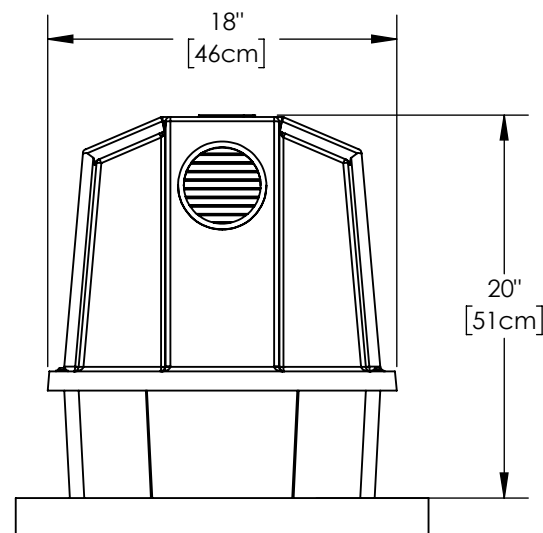
1. IF THE MINIMUM DIMENSIONS DO NOT PROVIDE THE REQUIRED TANK VOLUME, THEN ONE OR MORE DIMENSIONS MUST BE INCREASED UNTIL THE MINIMUM TANK VOLUME IS REACHED.
2. INSPECTION/PUMPOUT PORT LOCATIONS MAY VARY DEPENDING ON TANK CONSTRUCTION.
3. ALL APPURTENANCES TO FAST® (E.G. TANKS, ACCESS PORTS, ELECTRICAL, ETC.) MUST CONFORM TO ALL APPLICABLE COUNTY, STATE, PROVINCE, AND LOCAL PLUMBING AND ELECTRICAL CODES.
4. PUMP OUT ACCESS SHALL BE ADEQUATE TO THOROUGHLY CLEAN OUT BOTH ZONES.
5. IF LESS THAN THE SPECIFIED MINIMUMS ARE CONSIDERED NECESSARY, CONSULT FACTORY FOR GUIDANCE.

6. SPECIALIZED TREATMENT NEEDS MAY REQUIRE SPECIFIC FEATURES TO BE INCORPORATED INTO THE DESIGN. CONSULT FACTORY FOR GUIDANCE.
7. MINIMUM OF 2.0in [5.1cm] INVERT IS NECESSARY BETWEEN THE INLET AND OUTLET OF EACH ZONE FOR GRAVITY FLOW SYSTEMS.
8. TANK VOLUMES MAY VARY BY APPLICATION AND JURISDICTION.
9. TANKS OF VARYING SHAPE AND MATERIAL CAN BE USED WITHIN SPECIFIED MINIMUMS.
10. TANK SET UP MAY BE DIFFERENT THAN SHOWN, i.e., SEPARATE SETTLING AND TREATMENT TANKS.

<b>PROPRIETARY AND CONFIDENTIAL</b>  THE INFORMATION CONTAINED IN THIS DRAWING IS THE SOLE PROPERTY OF BIOMICROBICS, INC., ANY REPRODUCTION IN PART OR AS A WHOLE WITHOUT THE WRITTEN PERMISSION OF BIOMICROBICS, INC. IS PROHIBITED.  <b>DO NOT SCALE DRAWING</b>		UNLESS OTHERWISE SPECIFIED DIMENSIONS ARE IN INCHES AND TOLERANCES ARE AS FOLLOWS  X° ± 1° .X ± .50 .XX ± .25		 BETTER WATER. BETTER WORLD.™	
<b>SHEET 4 OF 5</b>		DRAWN BY: SRS		DESCRIPTION  TANK DETAIL DIMENSIONS	
		DATE: 09/29/2025			
		APPROVED BY: MSH			
SCALE: 1:32	SIZE: B	APPROVED DATE: 09/29/2025		PART NUMBER 600-FINFMCF0.5	REV A




## BLOWER PAD



### NOTES:

1. SOME MICROFAST CONFIGURATIONS MAY REQUIRE DIFFERENT BLOWER HOUSINGS.
2. BLOWER MUST BE LOCATED ABOVE FLOOD LEVELS.

<b>PROPRIETARY AND CONFIDENTIAL</b> THE INFORMATION CONTAINED IN THIS DRAWING IS THE SOLE PROPERTY OF BIO-MICROBICS, INC.. ANY REPRODUCTION IN PART OR AS A WHOLE WITHOUT THE WRITTEN PERMISSION OF BIO-MICROBICS, INC. IS PROHIBITED.		UNLESS OTHERWISE SPECIFIED DIMENSIONS ARE IN INCHES AND TOLERANCES ARE AS FOLLOWS X° ±1° .X ± .50 .XX ± .25		 BETTER WATER. BETTER WORLD.	
DO NOT SCALE DRAWING		DRAWN BY: SRS		DESCRIPTION SMALL BLOWER HOUSING AND PAD DETAILS	
		DATE: 09/29/2025		PART NUMBER 600-FINFMCF0.5	
SHEET 5 OF 5		APPROVED BY: MSH			
SCALE: 1:32	SIZE: B	APPROVED BY DATE: 09/29/2025			