
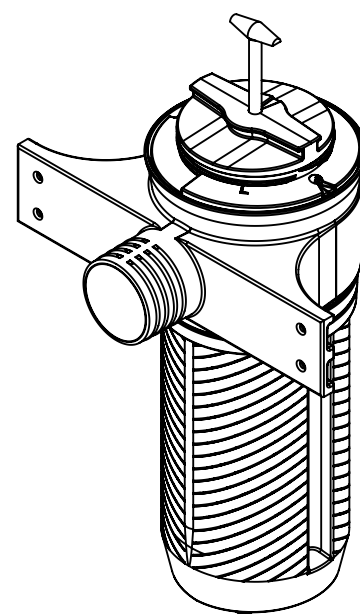
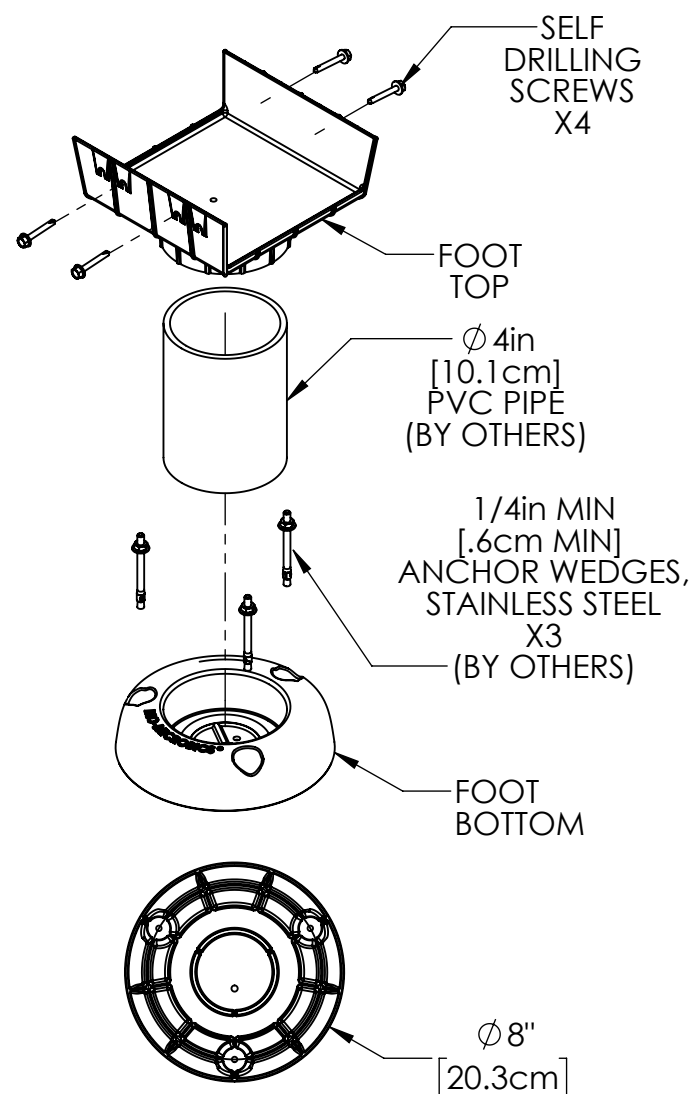
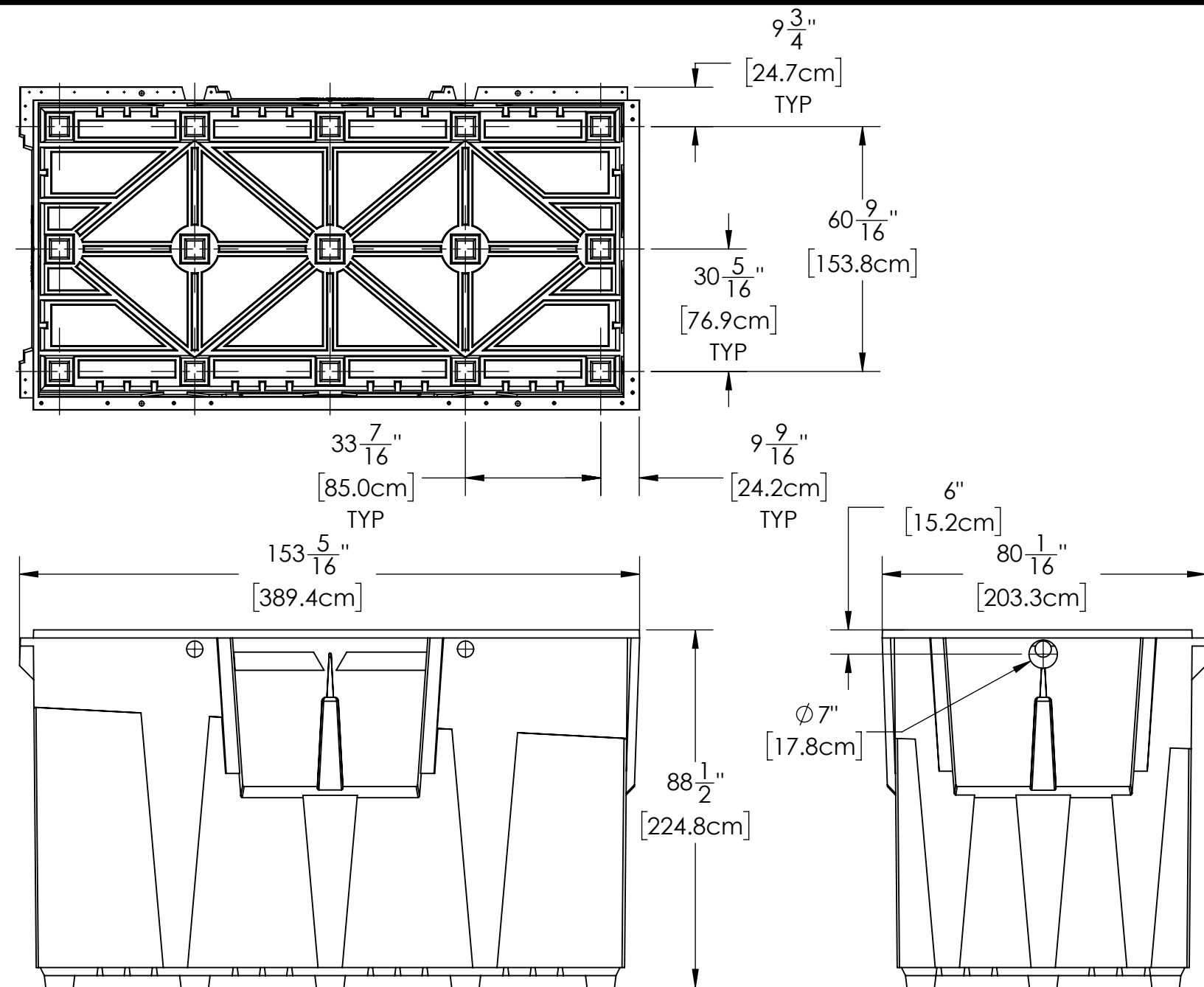
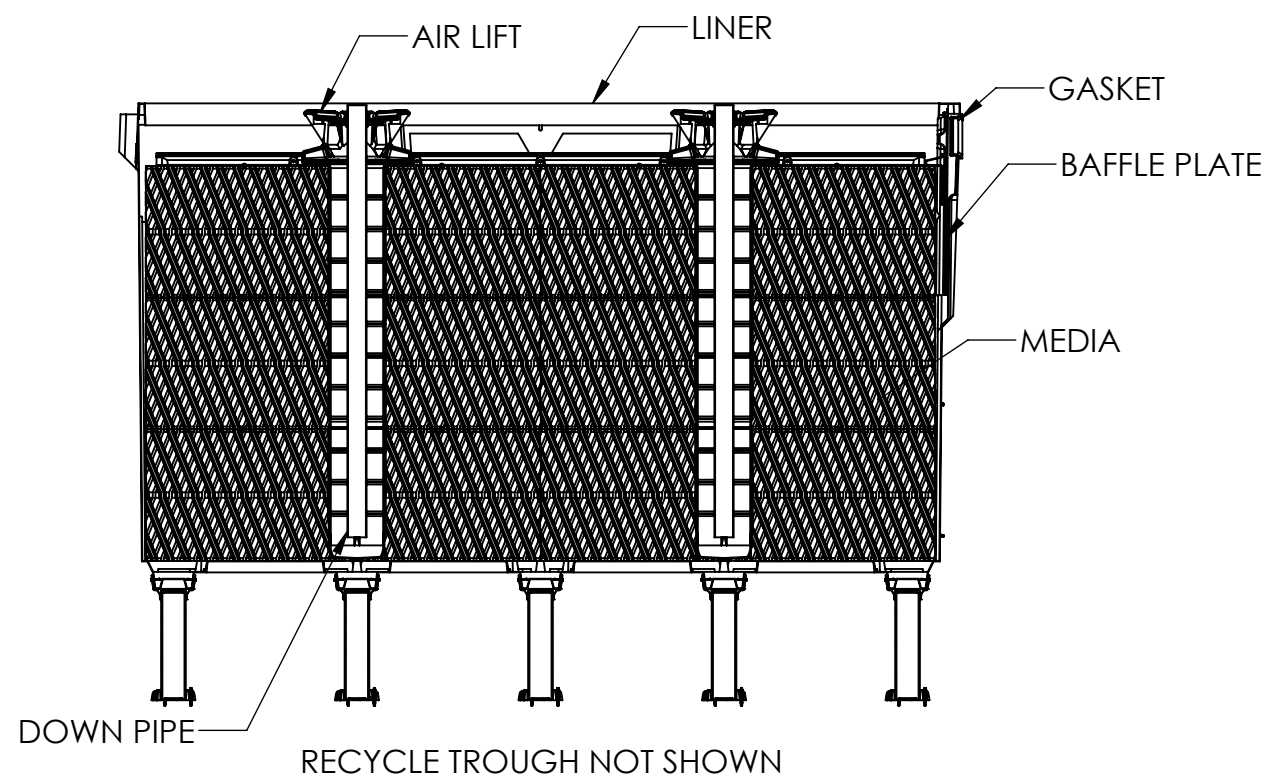


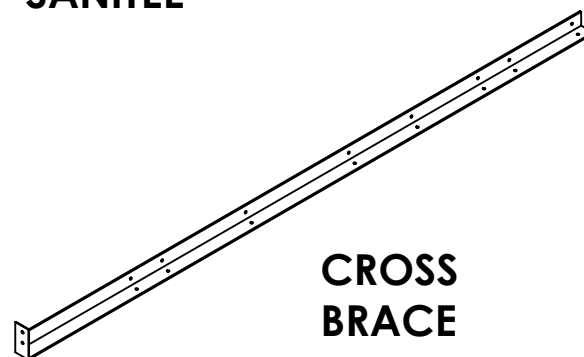
MYFAST® 1.0

REVISIONS		
REV.	DESCRIPTION	DATE
E	RELEASED TO CURRENT	7/1/2022

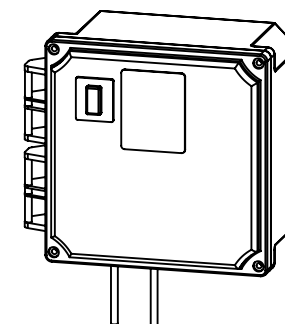
PROPRIETARY AND CONFIDENTIAL		UNLESS OTHERWISE SPECIFIED DIMENSIONS ARE IN INCHES AND TOLERANCES ARE AS FOLLOWS		 BETTER WATER. BETTER WORLD.®	
THE INFORMATION CONTAINED IN THIS DRAWING IS THE SOLE PROPERTY OF BIOMICROBICS, INC.. ANY REPRODUCTION IN PART OR AS A WHOLE WITHOUT THE WRITTEN PERMISSION OF BIOMICROBICS, INC. IS PROHIBITED. DO NOT SCALE DRAWING		X° ±1° .X ± .50 .XX ± .25		DESCRIPTION MYFAST 1.0 UNIT VIEW	
		DRAWN BY: MSH			
		DATE: 7/1/2022			
SHEET 1 OF 5		APPROVED BY: MSH		PART NUMBER	
SCALE: 1:32	SIZE: B	APPROVED DATE: 7/1/2022		MyFAST 1.0	
				REV E	



OPTIONAL
SANITEE



CROSS
BRACE



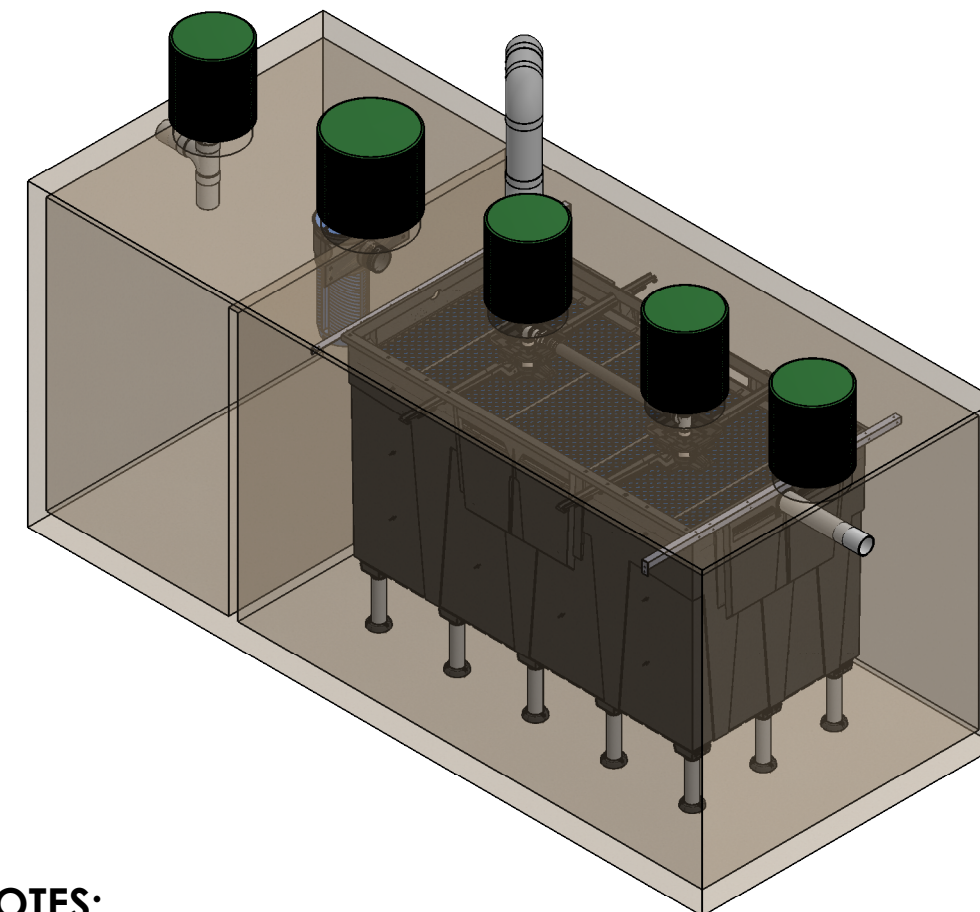
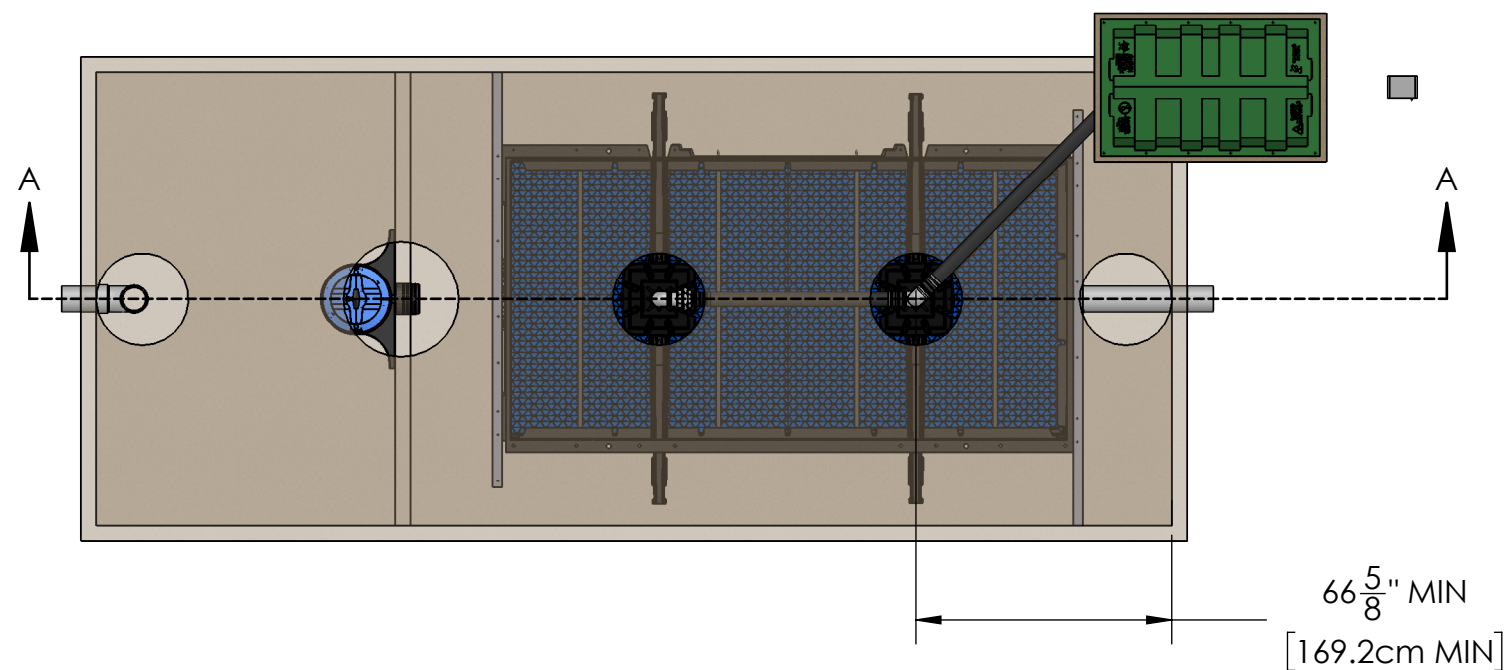
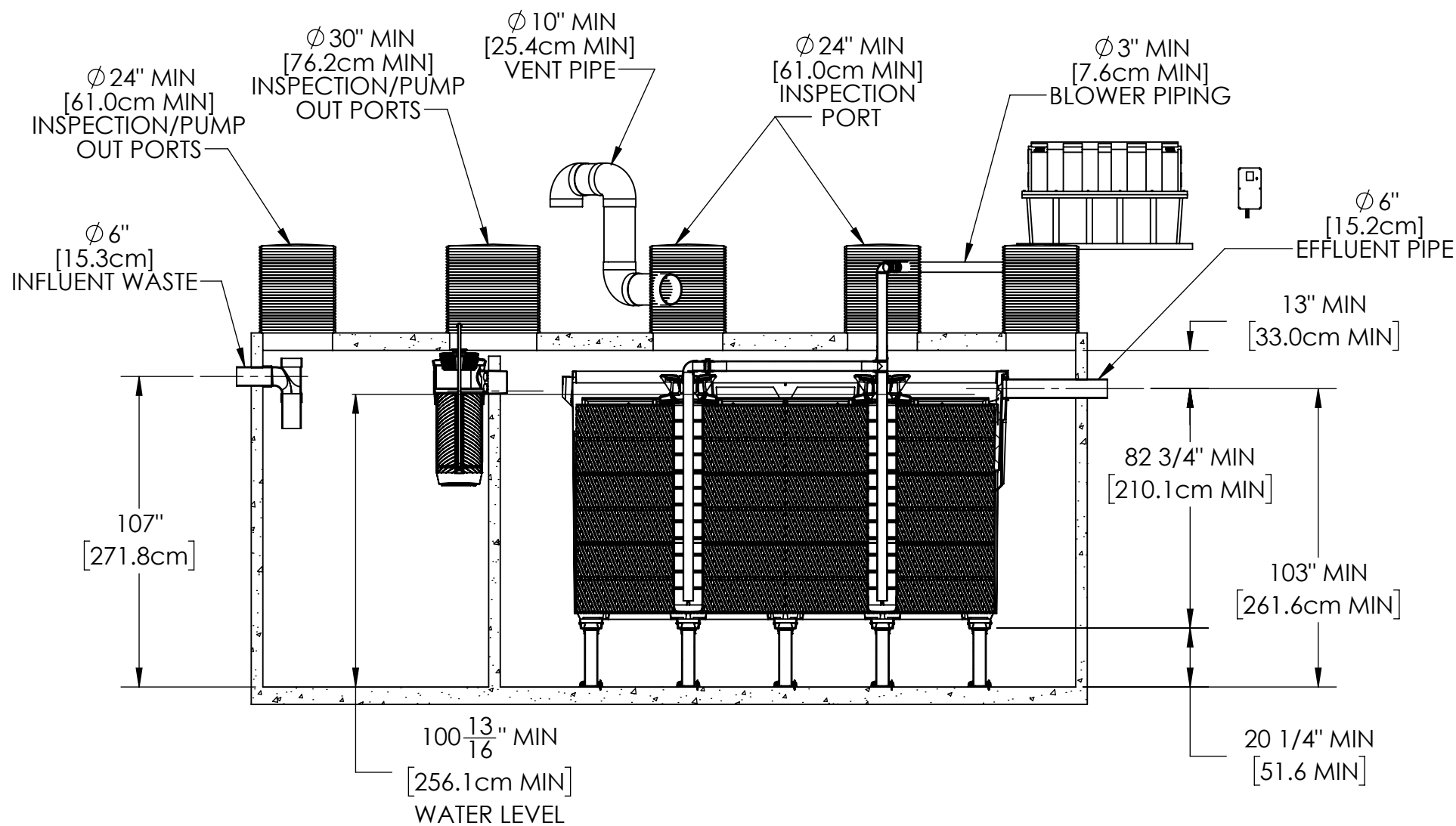
CONTROL
PANEL

NOTES:

- ITEMS ARE DEPICTIONS AND MAY VARY IN APPEARANCE.


PROPRIETARY AND CONFIDENTIAL THE INFORMATION CONTAINED IN THIS DRAWING IS THE SOLE PROPERTY OF BIOMICROBICS, INC.. ANY REPRODUCTION IN PART OR AS A WHOLE WITHOUT THE WRITTEN PERMISSION OF BIOMICROBICS, INC. IS PROHIBITED. DO NOT SCALE DRAWING		UNLESS OTHERWISE SPECIFIED DIMENSIONS ARE IN INCHES AND TOLERANCES ARE AS FOLLOWS $X^{\circ} \pm 1^{\circ}$ $.X \pm .50$ $.XX \pm .25$	
DRAWN BY: MSH		DATE: 7/1/2022	
APPROVED BY: MSH		APPROVED DATE: 7/1/2022	
SHEET 2 OF 5		DESCRIPTION MYFAST 1.0 UNIT DETAILS	
SCALE: 1:32	SIZE: B	PART NUMBER MyFAST 1.0	REV E

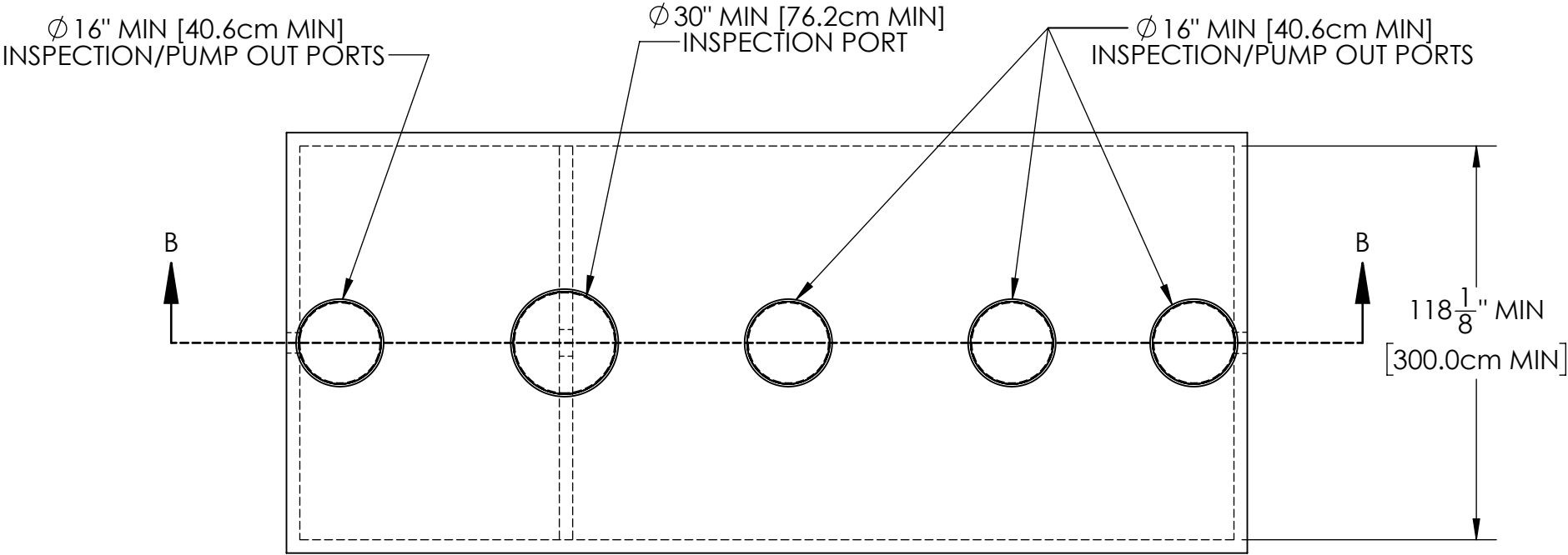




NOTES:

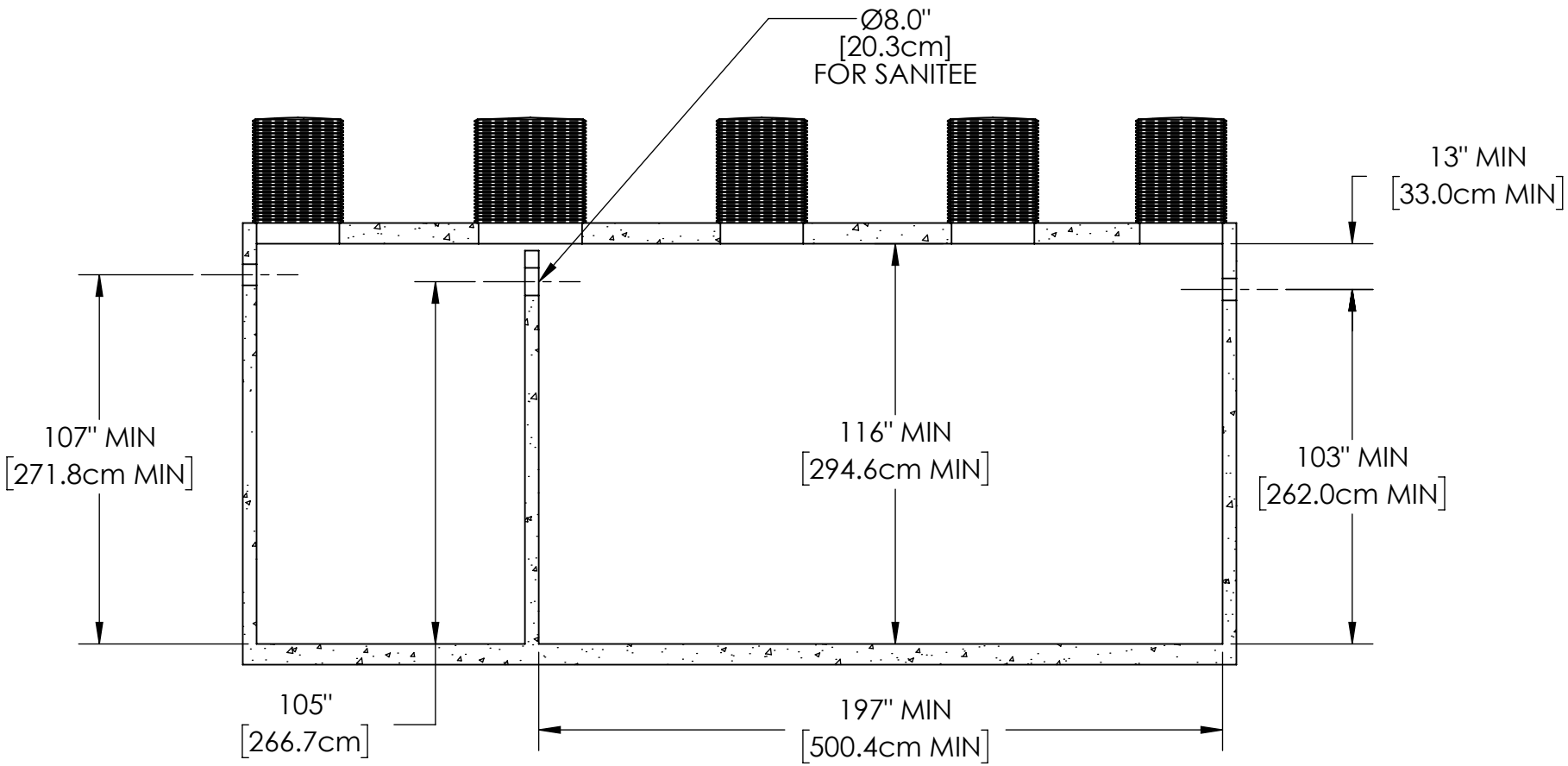
1. AIRLINE PIPING TO FAST® SHOULD NOT EXCEED 100 FT (30M) TOTAL LENGTH AND SHOULD HAVE A MAXIMUM OF 4 ELBOWS IN THE PIPING SYSTEM. FOR DISTANCES GREATER THAN 100 FT (30M) CONSULT FACTORY.
2. IF LESS THAN THE SPECIFIED MINIMUMS ARE CONSIDERED NECESSARY, CONSULT FACTORY FOR GUIDANCE.
3. SPECIALIZED TREATMENT NEEDS MAY REQUIRE SPECIFIC FEATURES TO BE INCORPORATED INTO THE DESIGN. CONSULT FACTORY FOR GUIDANCE.
4. SOME ITEMS REMOVED FOR CLARITY.
5. MINIMUM OF 2.0in [5.1cm] INVERT IS NECESSARY BETWEEN THE INLET AND OUTLET OF EACH ZONE FOR GRAVITY FLOW SYSTEMS.
6. THE CROSS BRACES SHOULD BE INSTALLED TO CONNECT THE LINER TO THE SIDE OF THE TANK, PREVENTING LATERAL MOVEMENT.

PROPRIETARY AND CONFIDENTIAL THE INFORMATION CONTAINED IN THIS DRAWING IS THE SOLE PROPERTY OF BIOMICROBICS, INC.. ANY REPRODUCTION IN PART OR AS A WHOLE WITHOUT THE WRITTEN PERMISSION OF BIOMICROBICS, INC. IS PROHIBITED. DO NOT SCALE DRAWING		UNLESS OTHERWISE SPECIFIED DIMENSIONS ARE IN INCHES AND TOLERANCES ARE AS FOLLOWS $X^{\circ} \pm 1^{\circ}$ $.X \pm .50$ $.XX \pm .25$		 BETTER WATER. BETTER WORLD.®	
DRAWN BY: MSH		DATE: 7/1/2022		DESCRIPTION: MYFAST 1.0 UNIT	
APPROVED BY: MSH		APPROVED DATE: 7/1/2022		PART NUMBER: MyFAST 1.0	
SCALE: 1:50	SIZE: B				REV: E



SETTLING ZONE
5000 GALLON MIN (18927 L MIN)


TREATMENT ZONE
10000 GALLON MIN (37854 L MIN)

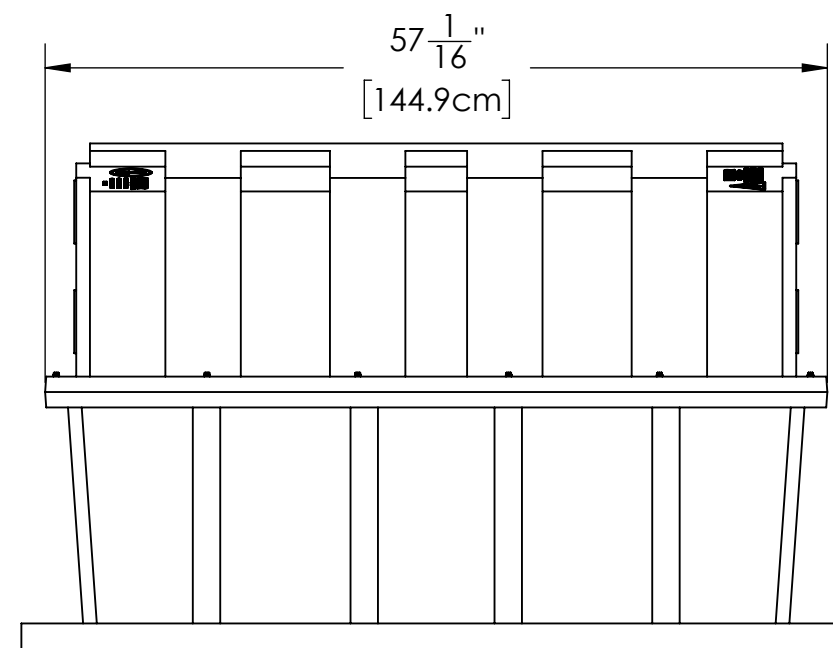
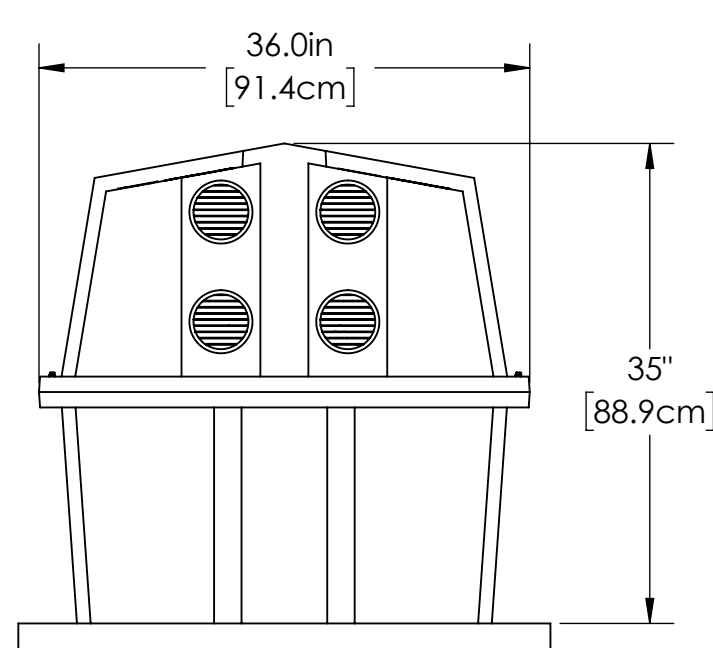
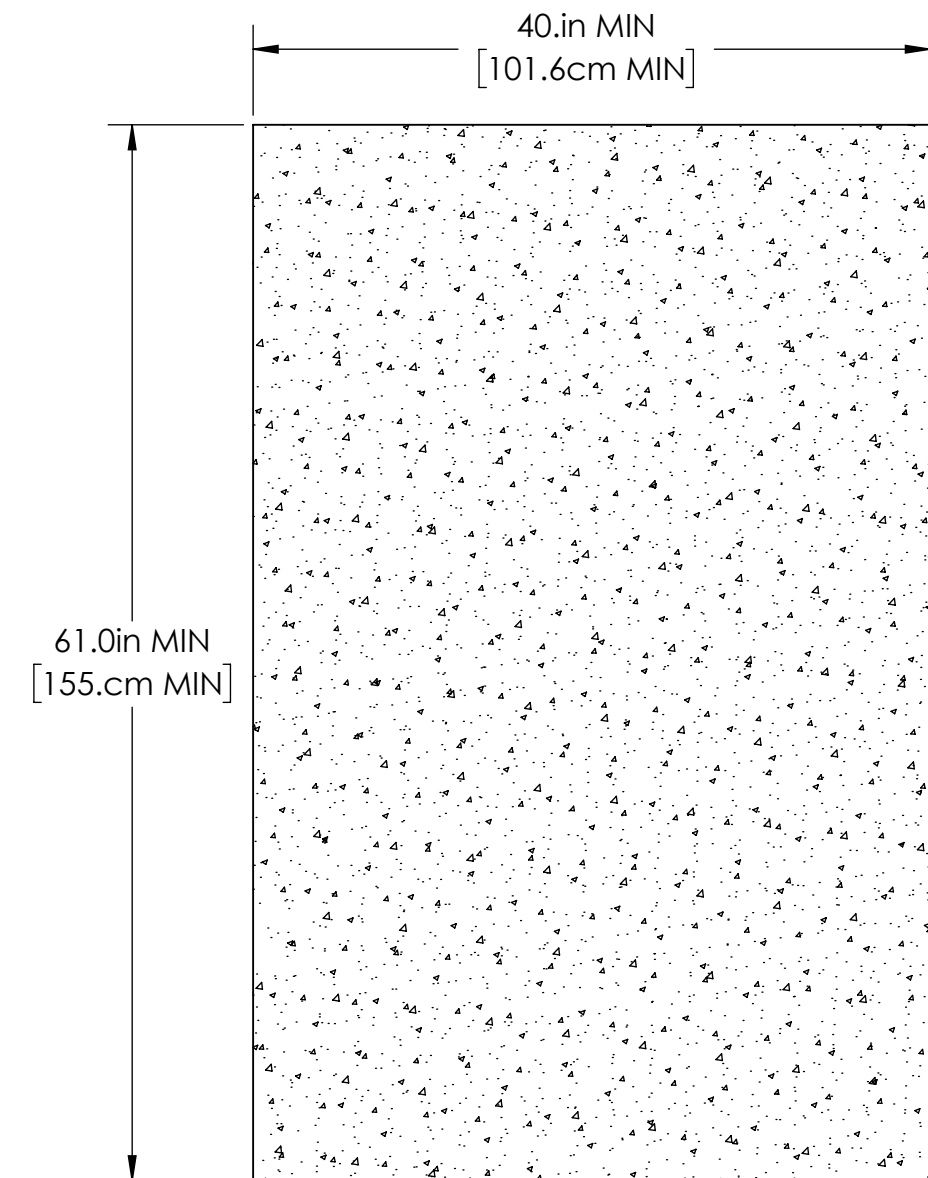
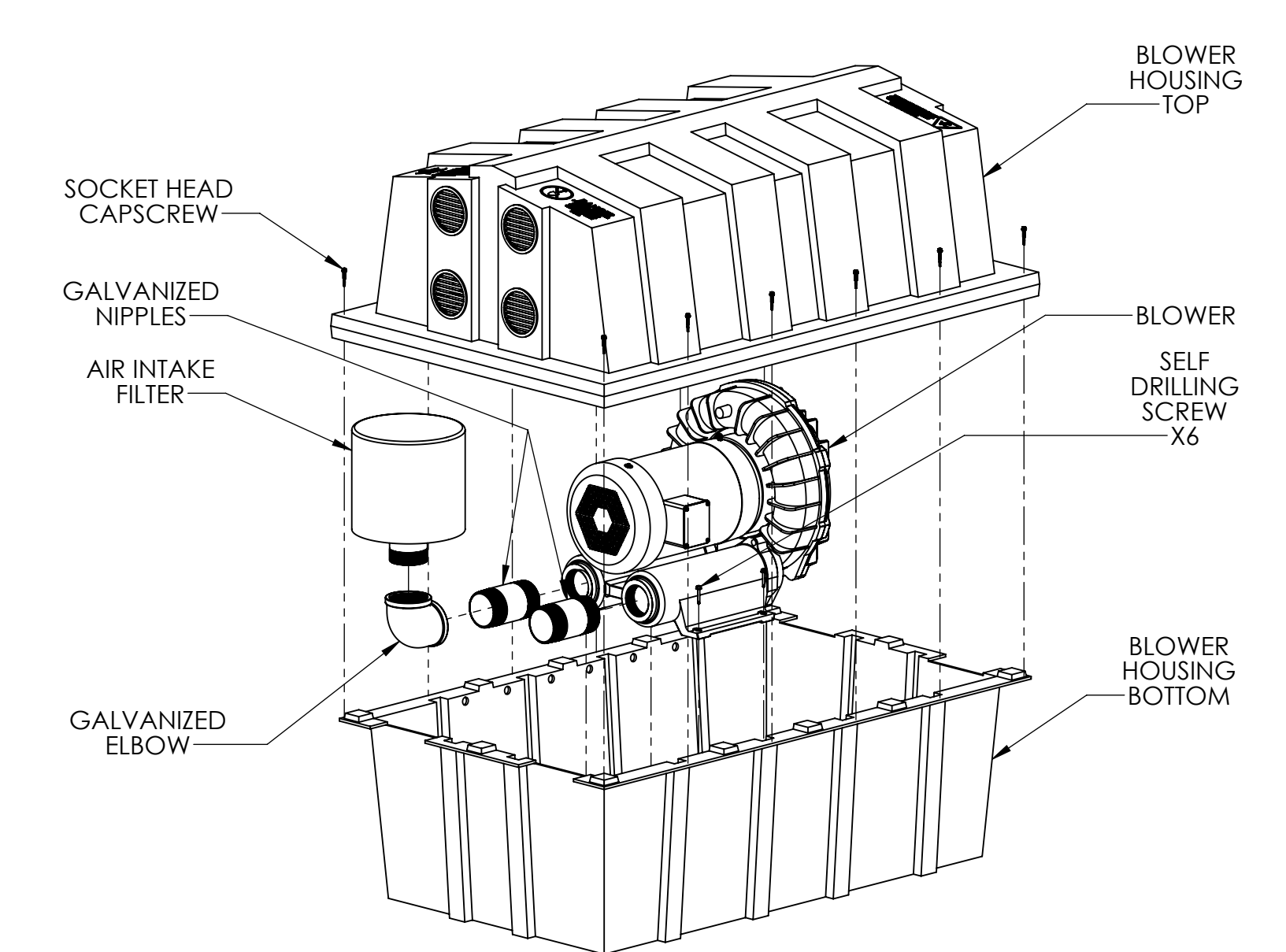


SECTION B-B

NOTES:

1. **MINIMUM DIMENSIONS DO NOT DETERMINE OVERALL TANK CAPACITY.**
2. INSPECTION/PUMPOUT PORT LOCATIONS MAY VARY DEPENDING ON TANK CONSTRUCTION.
3. ALL APPURTENANCES TO FAST® (E.G. TANKS, ACCESS PORTS, ELECTRICAL, ETC.) MUST CONFORM TO ALL APPLICABLE COUNTY, STATE, PROVINCE, AND LOCAL PLUMBING AND ELECTRICAL CODES.
4. PUMP OUT ACCESS SHALL BE ADEQUATE TO THOROUGHLY CLEAN OUT BOTH ZONES.
5. IF LESS THAN THE SPECIFIED MINIMUMS ARE CONSIDERED NECESSARY, CONSULT FACTORY FOR GUIDANCE.
6. SPECIALIZED TREATMENT NEEDS MAY REQUIRE SPECIFIC FEATURES TO BE INCORPORATED INTO THE DESIGN. CONSULT FACTORY FOR GUIDANCE.
7. MINIMUM OF 2.0in [5.1cm] INVERT IS NECESSARY BETWEEN THE INLET AND OUTLET OF EACH ZONE FOR GRAVITY FLOW SYSTEMS.
8. TANK VOLUMES MAY VARY BY APPLICATION AND JURISDICTION.
9. MYFAST UNITS CAN GO INTO OTHER THAN SHOWN TYPES OF TANKS, NON RECTANGULAR, PLASTIC, ETC.
10. TANK SETUP CAN BE DIFFERENT THAN SHOWN, SEPARATE SETTLING AND TREATMENT TANKS CAN BE USED.


PROPRIETARY AND CONFIDENTIAL THE INFORMATION CONTAINED IN THIS DRAWING IS THE SOLE PROPERTY OF BIOMICROBICS, INC.. ANY REPRODUCTION IN PART OR AS A WHOLE WITHOUT THE WRITTEN PERMISSION OF BIOMICROBICS, INC. IS PROHIBITED. DO NOT SCALE DRAWING		UNLESS OTHERWISE SPECIFIED DIMENSIONS ARE IN INCHES AND TOLERANCES ARE AS FOLLOWS X° ±1° .X ± .50 .XX ± .25		 BIO MICROBICS BETTER WATER. BETTER WORLD.®	
		DRAWN BY: MSH			
		DATE: 7/1/2022		DESCRIPTION TANK DETAIL DIMENSIONS	
SHEET 4 OF 5		APPROVED BY: MSH		PART NUMBER	
SCALE: 1:48	SIZE: B	APPROVED DATE: 7/1/2022		MyFAST 1.0	REV E



BLOWER PAD

NOTES:

1. SOME MICROFAST CONFIGURATIONS MAY REQUIRE DIFFERENT BLOWER HOUSINGS.
2. BLOWER MUST BE LOCATED ABOVE FLOOD LEVELS.

PROPRIETARY AND CONFIDENTIAL THE INFORMATION CONTAINED IN THIS DRAWING IS THE SOLE PROPERTY OF BIOMICROBICS, INC.. ANY REPRODUCTION IN PART OR AS A WHOLE WITHOUT THE WRITTEN PERMISSION OF BIOMICROBICS, INC. IS PROHIBITED. DO NOT SCALE DRAWING		UNLESS OTHERWISE SPECIFIED DIMENSIONS ARE IN INCHES AND TOLERANCES ARE AS FOLLOWS X° ± 1° .X ± .50 .XX ± .25		 BETTER WATER. BETTER WORLD.™	
SHEET 5 OF 5		DRAWN BY: MSH			
		DATE: 7/1/2022		PART NUMBER MyFAST 1.0	REV E
SCALE: 1:32		SIZE: B	APPROVED BY: MSH		
			APPROVED DATE: 7/1/2022		