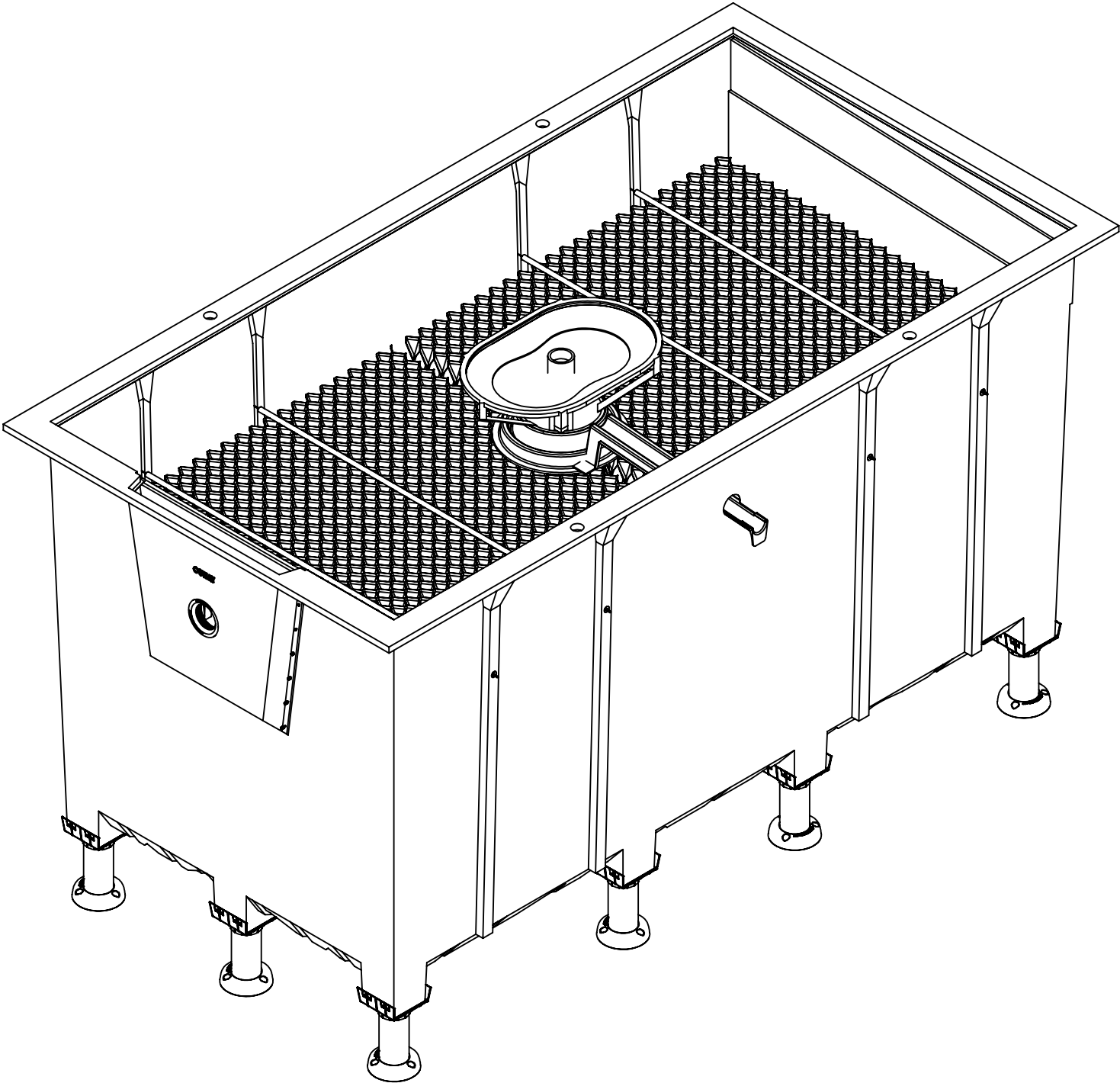

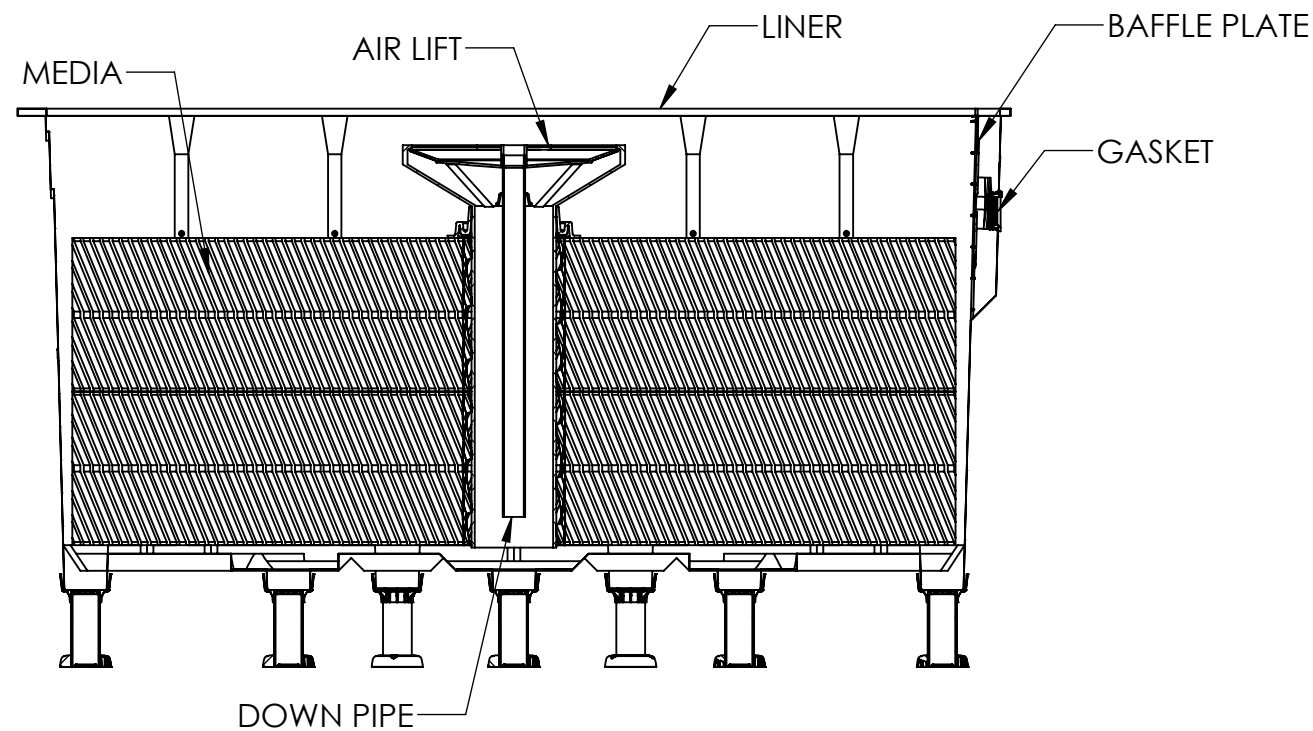


REVISIONS		
REV.	DESCRIPTION	DATE
G	REVISED TO CURRENT	6/2/2021

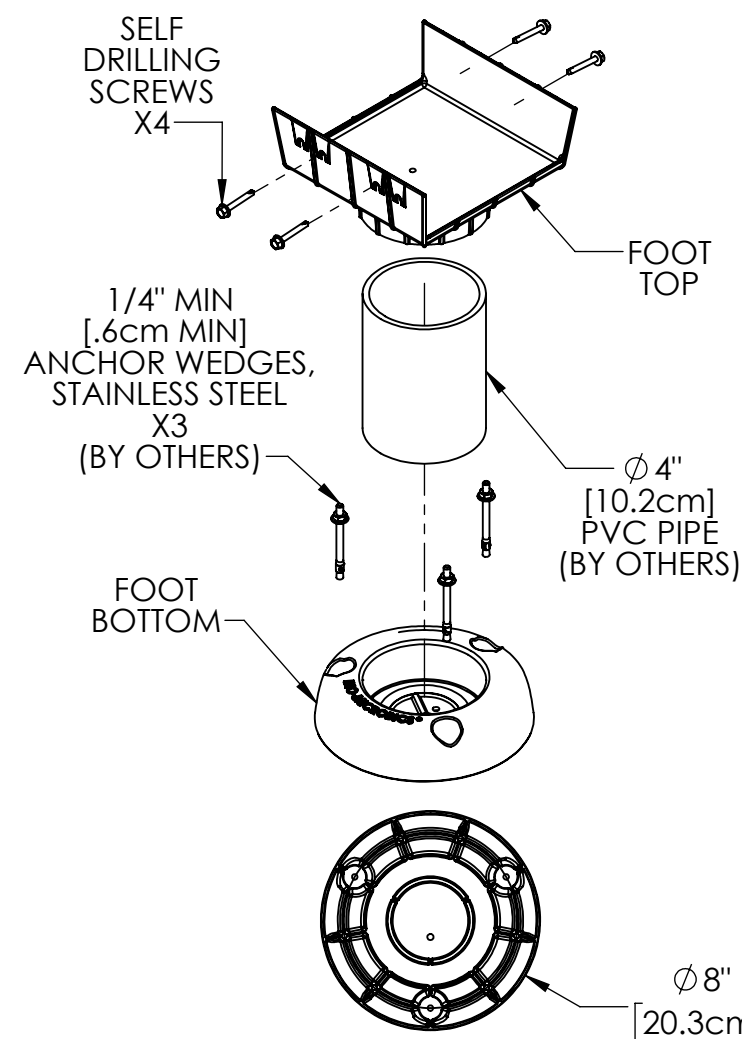


NitriFAST® 9.0

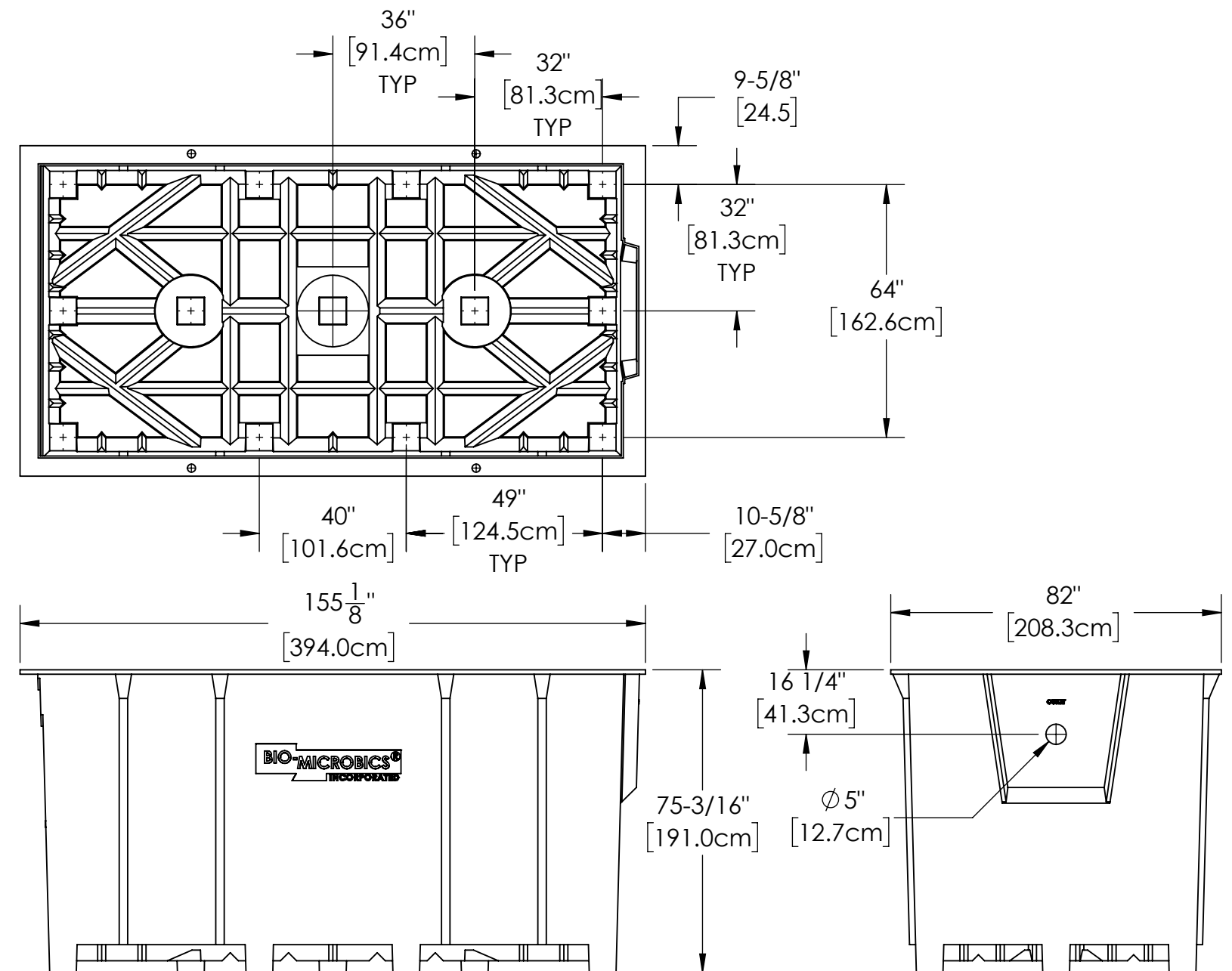
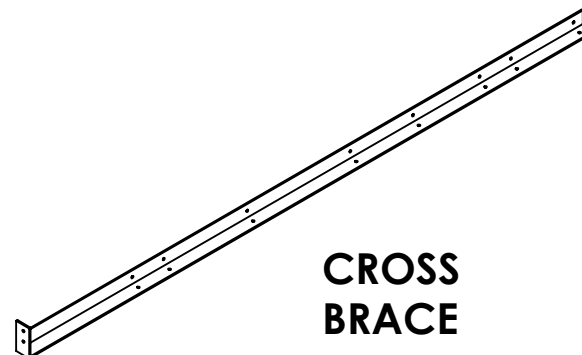
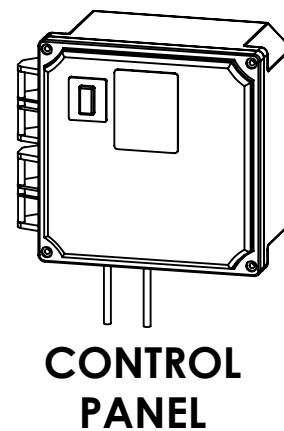
PROPRIETARY AND CONFIDENTIAL		UNLESS OTHERWISE SPECIFIED DIMENSIONS ARE IN INCHES AND TOLERANCES ARE AS FOLLOWS			
THE INFORMATION CONTAINED IN THIS DRAWING IS THE SOLE PROPERTY OF BIOMICROBICS, INC.. ANY REPRODUCTION IN PART OR AS A WHOLE WITHOUT THE WRITTEN PERMISSION OF BIOMICROBICS, INC. IS PROHIBITED.		$X^{\circ} \pm 1^{\circ}$.X \pm .50 .XX \pm .25		DESCRIPTION NITRIFAST 9.0 UNIT VIEW	
		DRAWN BY: ESG			
		DATE: 4/12/2022			
DO NOT SCALE DRAWING					
SHEET 1 OF 5		APPROVED BY: MSH		PART NUMBER	
SCALE: 1:32	SIZE: B	APPROVED DATE: 4/12/2022		600-FINNTF9.0	
				REV G	



RECYCLE TROUGH NOT SHOWN



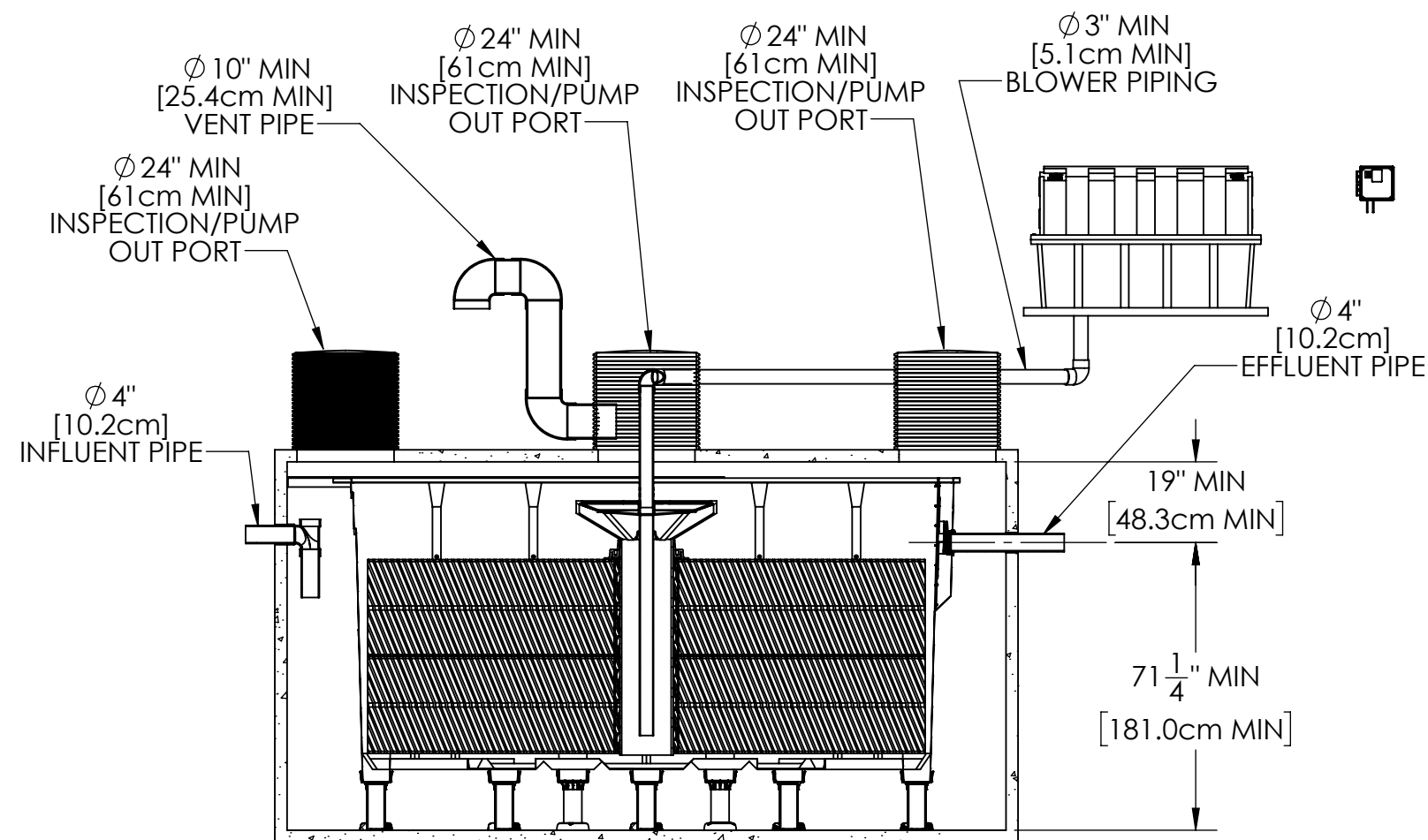
OPTIONAL FEET



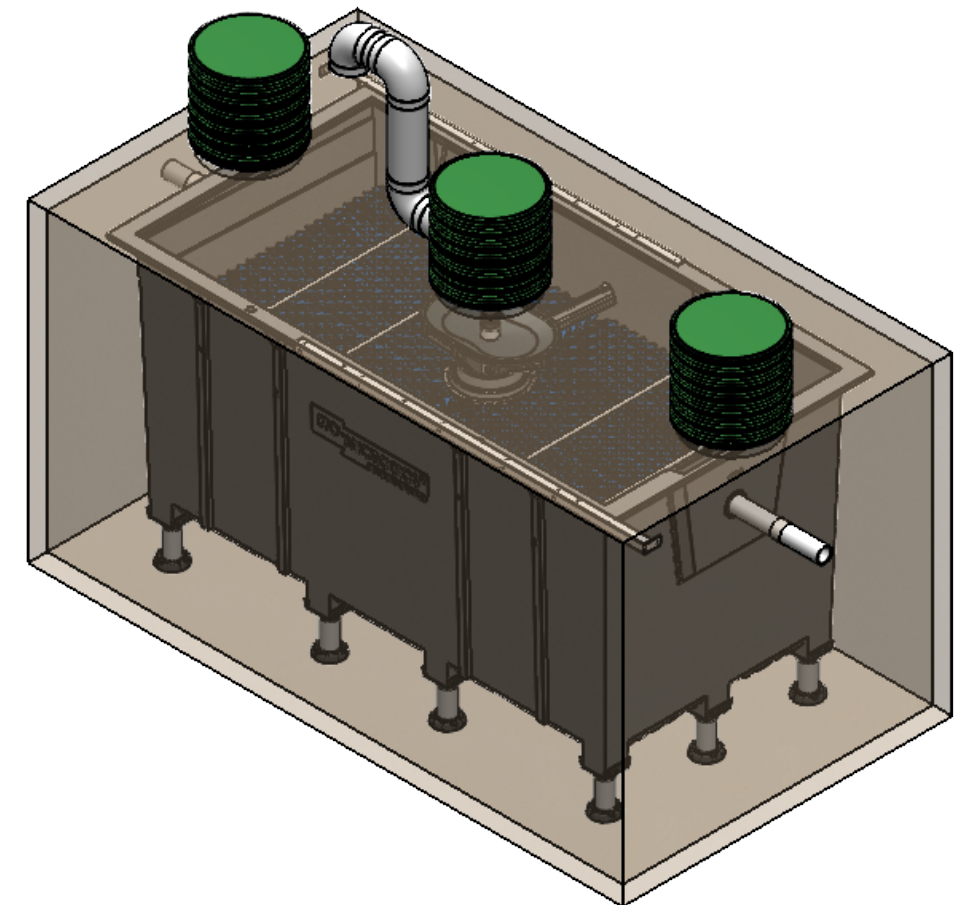
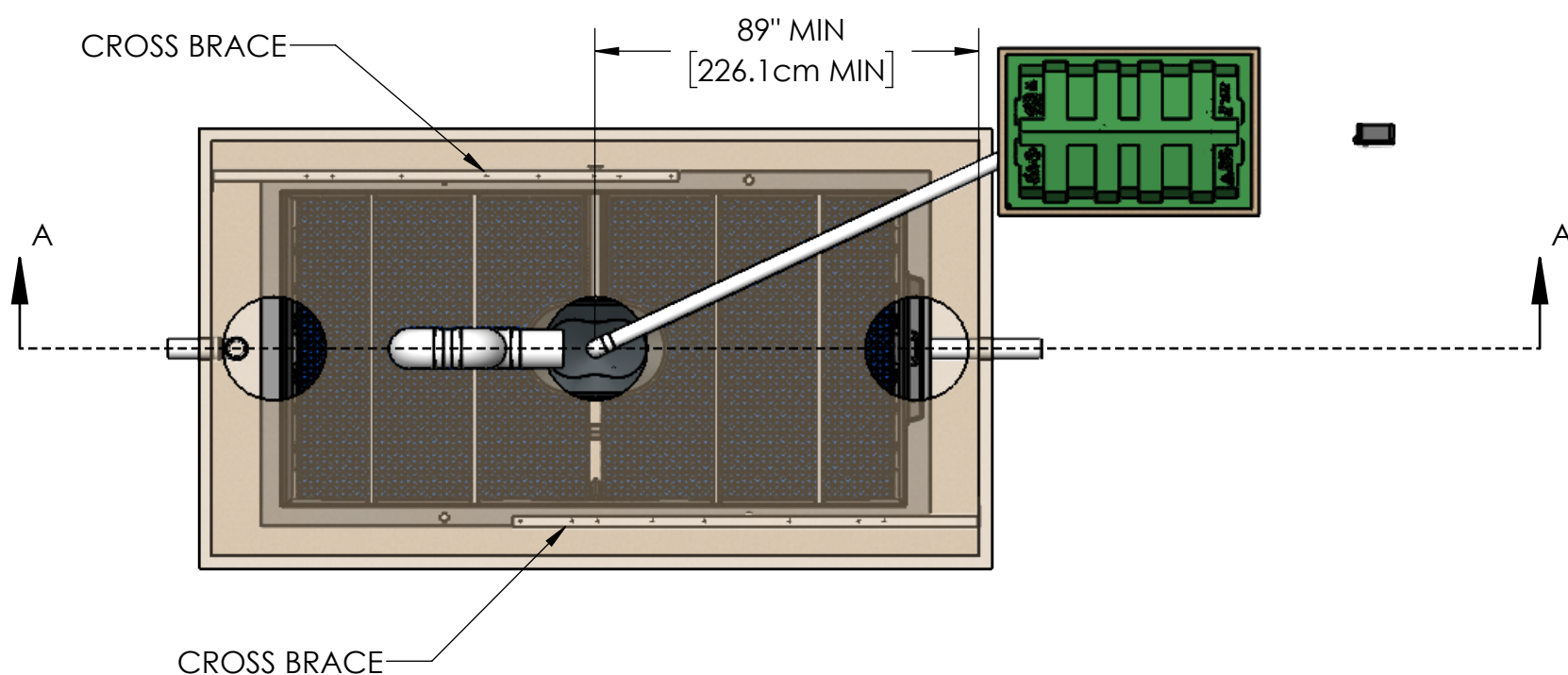
NOTES:

1. ITEMS ARE DEPICTIONS AND MAY VARY IN APPEARANCE.

PROPRIETARY AND CONFIDENTIAL THE INFORMATION CONTAINED IN THIS DRAWING IS THE SOLE PROPERTY OF BIOMICROBICS, INC.. ANY REPRODUCTION IN PART OR AS A WHOLE WITHOUT THE WRITTEN PERMISSION OF BIOMICROBICS, INC. IS PROHIBITED. DO NOT SCALE DRAWING		UNLESS OTHERWISE SPECIFIED DIMENSIONS ARE IN INCHES AND TOLERANCES ARE AS FOLLOWS X° ± 1° .X ± .50 .XX ± .25	BIO MICROBICS BETTER WATER. BETTER WORLD.	
DRAWN BY: ESG		DATE: 4/12/2022	DESCRIPTION NITRIFAST 9.0 UNIT DETAILS	
APPROVED BY: MSH		APPROVED DATE: 4/12/2022	PART NUMBER 600-FINNTF9.0	REV G
SHEET 2 OF 5				
SCALE: 1:32	SIZE: B			




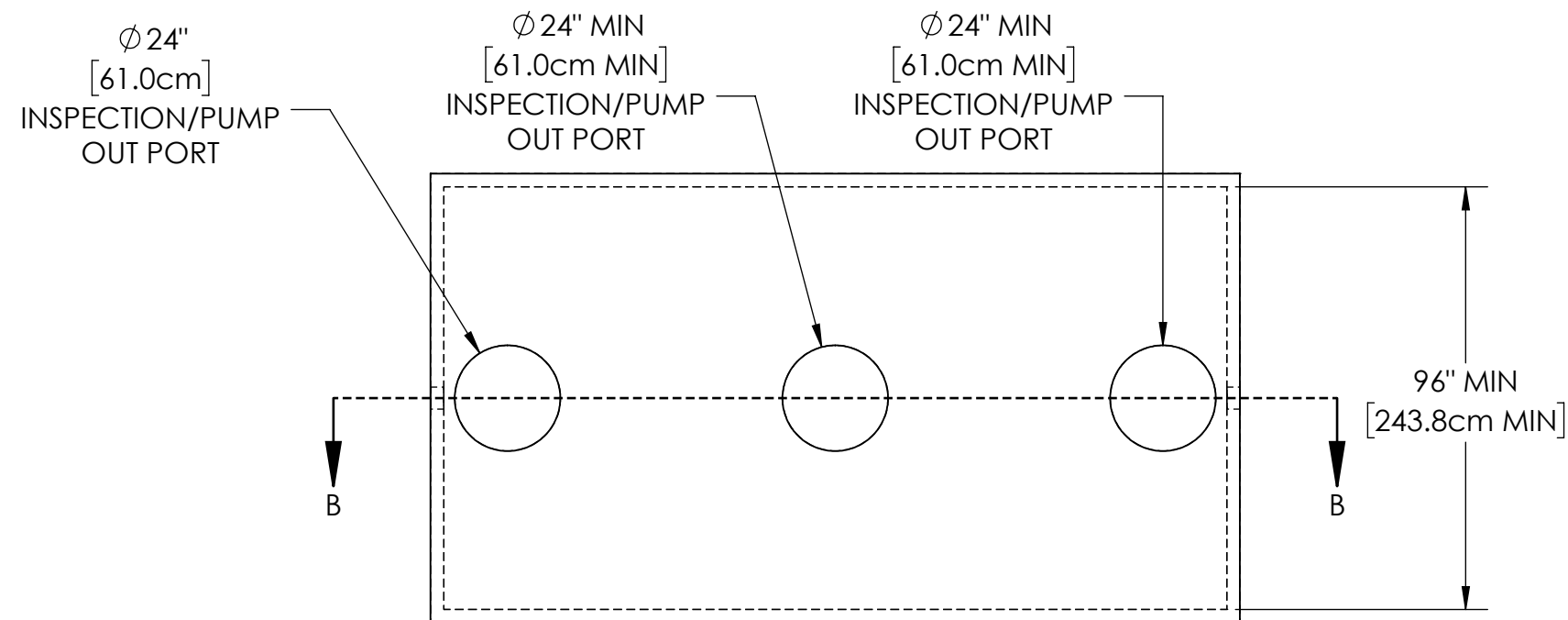
SECTION A-A



NOTES:

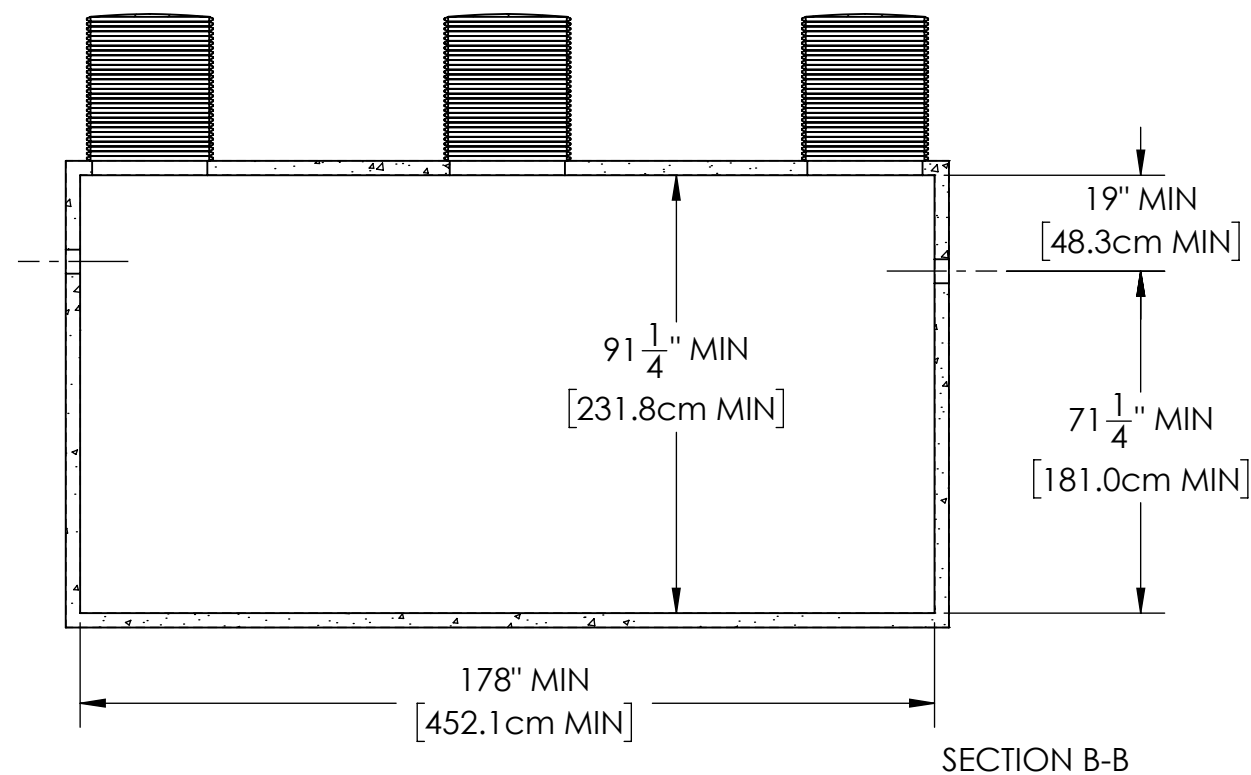
1. AIRLINE PIPING TO FAST® SHOULD NOT EXCEED 100 FT (30M) TOTAL LENGTH AND SHOULD HAVE A MAXIMUM OF 4 ELBOWS IN THE PIPING SYSTEM. FOR DISTANCES GREATER THAN 100 FT (30M) CONSULT FACTORY.
2. IF LESS THAN THE SPECIFIED MINIMUMS ARE CONSIDERED NECESSARY, CONSULT FACTORY FOR GUIDANCE.
3. SPECIALIZED TREATMENT NEEDS MAY REQUIRE SPECIFIC FEATURES TO BE INCORPORATED INTO THE DESIGN. CONSULT FACTORY FOR GUIDANCE.
4. SOME ITEMS REMOVED FOR CLARITY.
5. MINIMUM OF 2.0in [5.1cm] INVERT IS NECESSARY BETWEEN THE INLET AND OUTLET OF THE TANK FOR GRAVITY FLOW SYSTEMS.
6. THE CROSS BRACES SHOULD BE INSTALLED TO CONNECT THE LINER TO THE SIDE OF THE TANK, PREVENTING LATERAL MOVEMENT.

<p>PROPRIETARY AND CONFIDENTIAL</p> <p>THE INFORMATION CONTAINED IN THIS DRAWING IS THE SOLE PROPERTY OF BIOMICROBICS, INC., ANY REPRODUCTION IN PART OR AS A WHOLE WITHOUT THE WRITTEN PERMISSION OF BIOMICROBICS, INC. IS PROHIBITED.</p> <p>DO NOT SCALE DRAWING</p>		<p>UNLESS OTHERWISE SPECIFIED DIMENSIONS ARE IN INCHES AND TOLERANCES ARE AS FOLLOWS</p> <p>X° ±1° .X ± .50 .XX ± .25</p>			
		<p>DRAWN BY: ESG</p>			
		<p>SHEET 3 OF 5</p>		<p>DATE: 4/12/2022</p>	
<p>APPROVED BY: MSH</p>				<p>PART NUMBER 600-FINNTF9.0</p>	
<p>SCALE: 1:48</p>	<p>SIZE: B</p>	<p>APPROVED DATE: 4/12/2022</p>		<p>REV G</p>	




TREATMENT ZONE

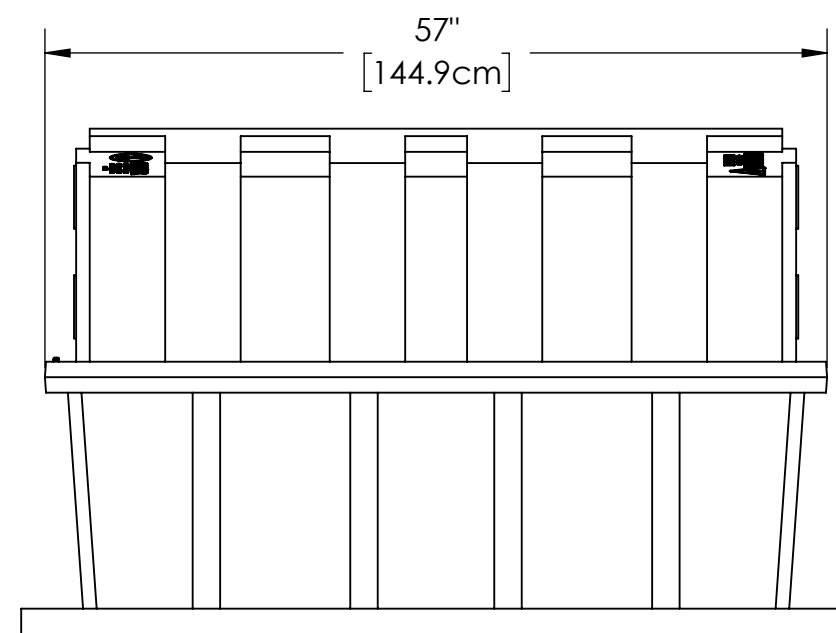
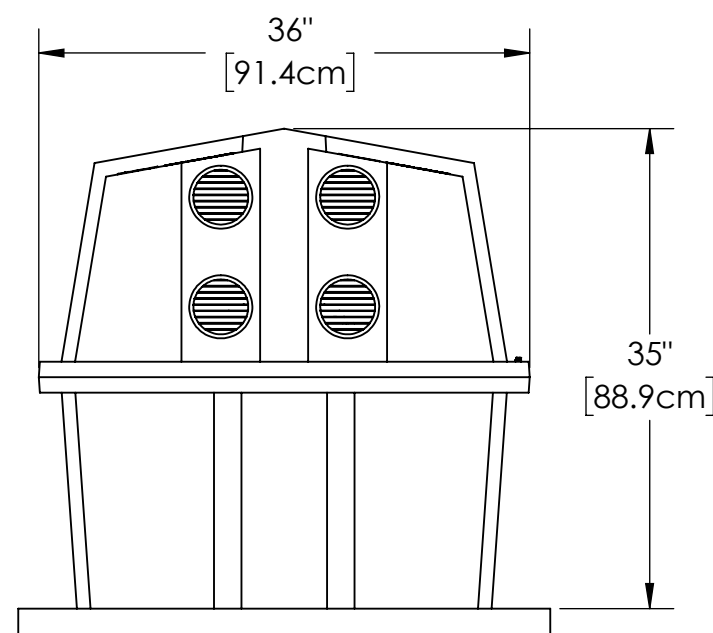
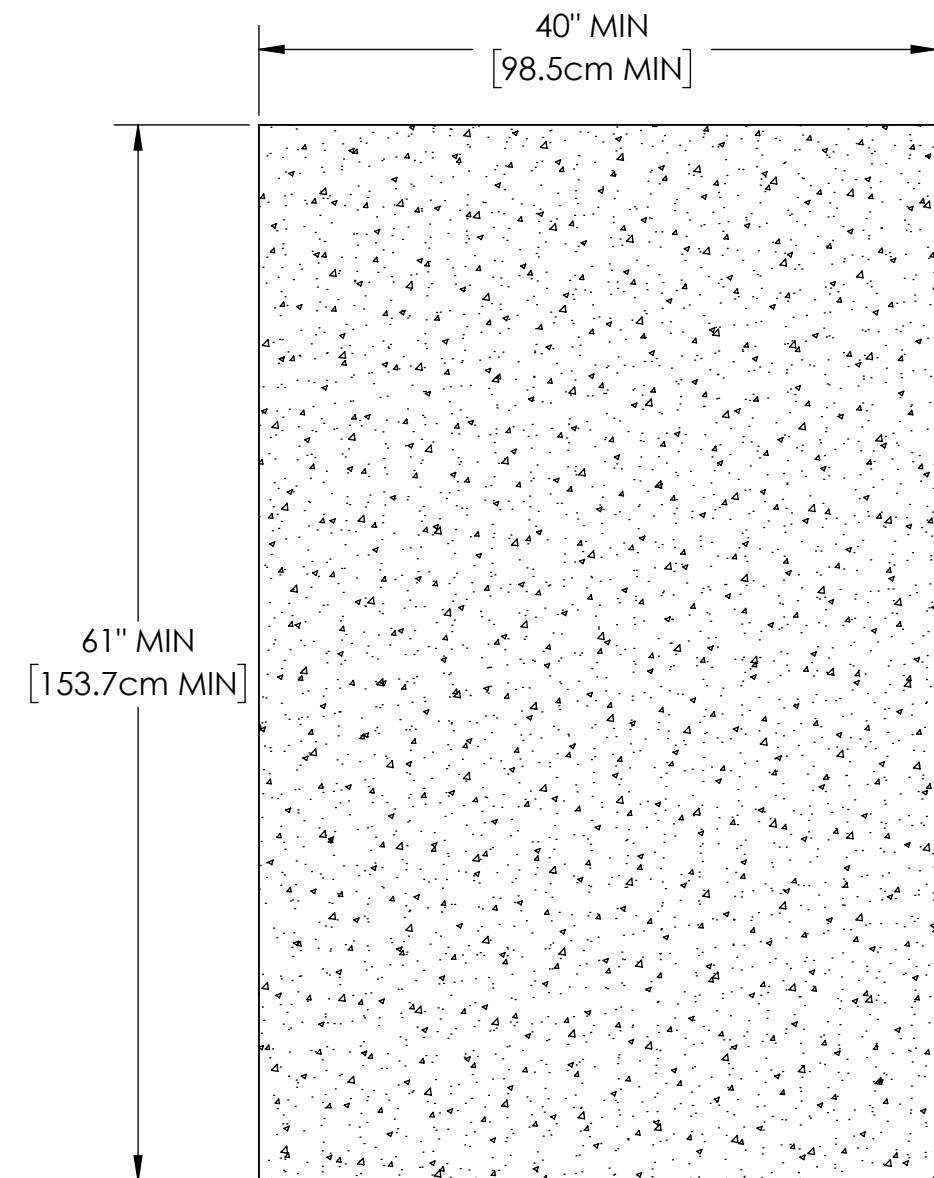
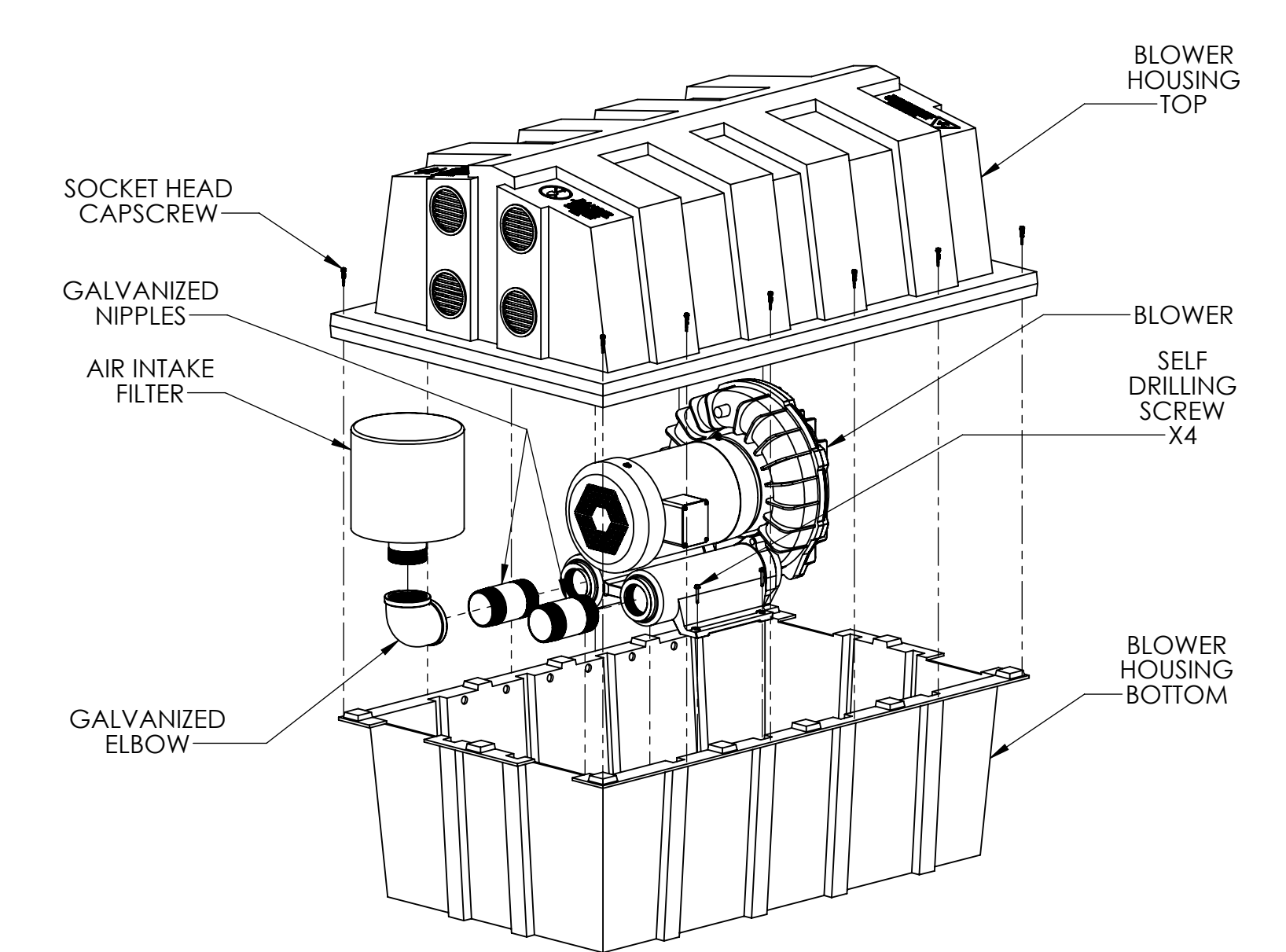
8440 GALLON MIN (31949 L MIN)



NOTES:

1. MINIMUM DIMENSIONS DO NOT DETERMINE OVERALL TANK CAPACITY.
2. INSPECTION/PUMP OUT PORT LOCATIONS MAY VARY DEPENDING ON TANK CONSTRUCTION.
3. ALL APPURTENANCES TO FAST® (E.G. TANKS, ACCESS PORTS, ELECTRICAL, ETC.) MUST CONFORM TO ALL APPLICABLE COUNTY, STATE, PROVINCE, AND LOCAL PLUMBING AND ELECTRICAL CODES.
4. PUMP OUT ACCESS SHALL BE ADEQUATE TO THOROUGHLY CLEAN OUT THE TANK.
5. IF LESS THAN THE SPECIFIED MINIMUMS ARE CONSIDERED NECESSARY, CONSULT FACTORY FOR GUIDANCE.
6. SPECIALIZED TREATMENT NEEDS MAY REQUIRE SPECIFIC FEATURES TO BE INCORPORATED INTO THE DESIGN. CONSULT FACTORY FOR GUIDANCE.
7. MINIMUM OF 2.0in [5.1cm] INVERT IS NECESSARY BETWEEN THE INLET AND OUTLET OF THE TANK FOR GRAVITY FLOW SYSTEMS.
8. TANK VOLUMES MAY VARY BY APPLICATION AND JURISDICTION.
9. NITRIFAST UNITS CAN GO INTO OTHER THAN SHOWN TYPES OF TANKS, NON RECTANGULAR, PLASTIC, ETC.


<p>PROPRIETARY AND CONFIDENTIAL</p> <p>THE INFORMATION CONTAINED IN THIS DRAWING IS THE SOLE PROPERTY OF BIOMICROBICS, INC., ANY REPRODUCTION IN PART OR AS A WHOLE WITHOUT THE WRITTEN PERMISSION OF BIOMICROBICS, INC. IS PROHIBITED.</p> <p>DO NOT SCALE DRAWING</p>		<p>UNLESS OTHERWISE SPECIFIED DIMENSIONS ARE IN INCHES AND TOLERANCES ARE AS FOLLOWS</p> <p>X° ± 1° .X ± .50 .XX ± .25</p>		<div><p>BIO MICROBICS BETTER WATER. BETTER WORLD.</p></div>	
		<p>DRAWN BY: ESG</p>			
		<p>SHEET 4 OF 5</p>		<p>DATE: 4/12/2022</p>	
<p>APPROVED BY: MSH</p>				<p>PART NUMBER 600-FINNTF9.0</p>	
<p>SCALE: 1:48</p>	<p>SIZE: B</p>	<p>APPROVED DATE: 4/12/2022</p>		<p>REV G</p>	



BLOWER PAD

NOTES:

1. SOME NITRIFAST CONFIGURATIONS MAY REQUIRE DIFFERENT BLOWER HOUSINGS.
2. BLOWER MUST BE LOCATED ABOVE FLOOD LEVELS.

PROPRIETARY AND CONFIDENTIAL THE INFORMATION CONTAINED IN THIS DRAWING IS THE SOLE PROPERTY OF BIOMICROBICS, INC., ANY REPRODUCTION IN PART OR AS A WHOLE WITHOUT THE WRITTEN PERMISSION OF BIOMICROBICS, INC. IS PROHIBITED. DO NOT SCALE DRAWING		UNLESS OTHERWISE SPECIFIED DIMENSIONS ARE IN INCHES AND TOLERANCES ARE AS FOLLOWS X° ± 1° .X ± .50 .XX ± .25		 BETTER WATER. BETTER WORLD.	
SHEET 5 OF 5		DRAWN BY: ESG		DESCRIPTION LARGE BLOWER HOUSING AND PAD DETAILS	
		DATE: 4/12/2022		PART NUMBER 600-FINNTF9.0	
		APPROVED BY: MSH			
SCALE: 1:32	SIZE: B	APPROVED DATE: 4/12/2022		REV G	