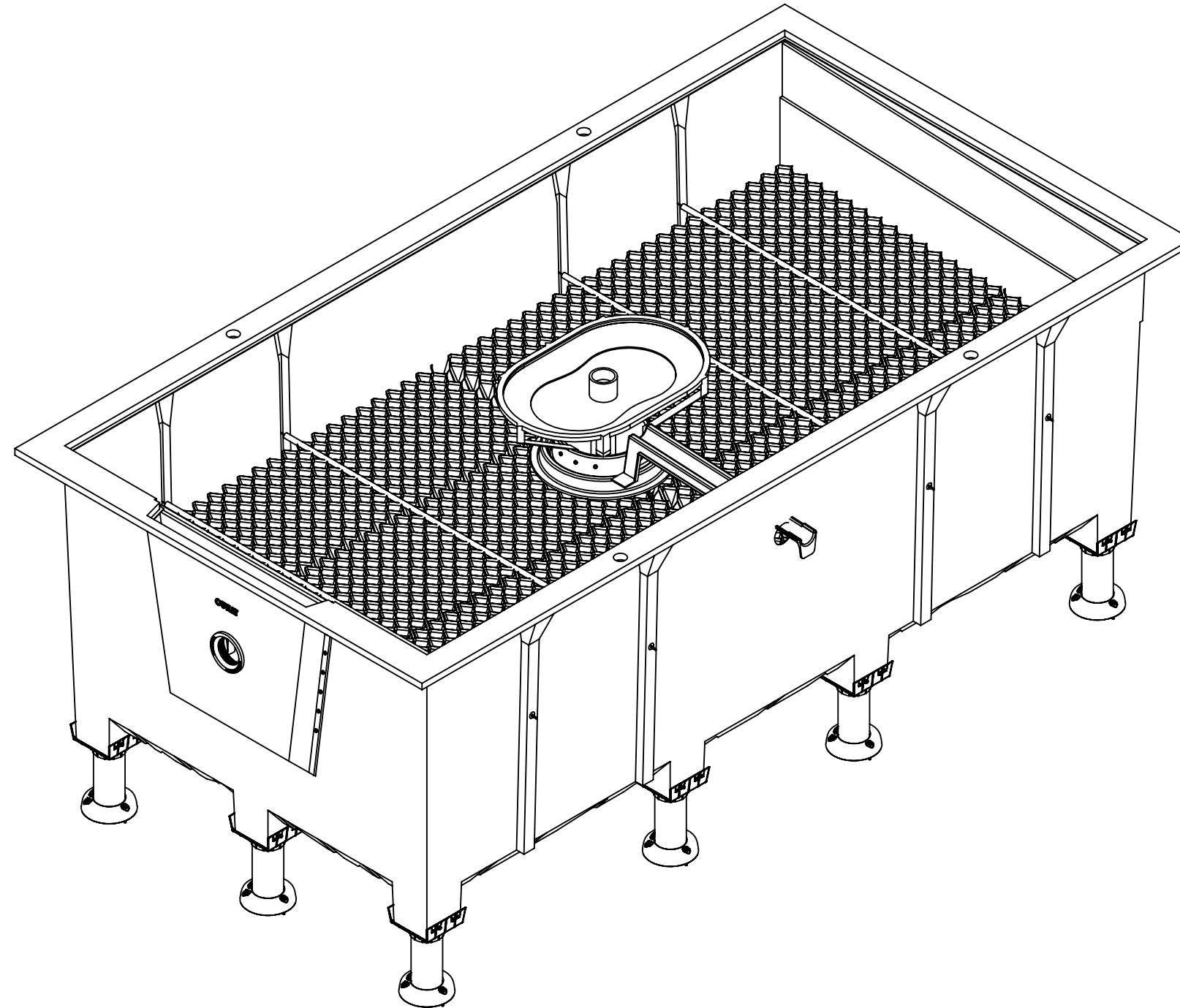

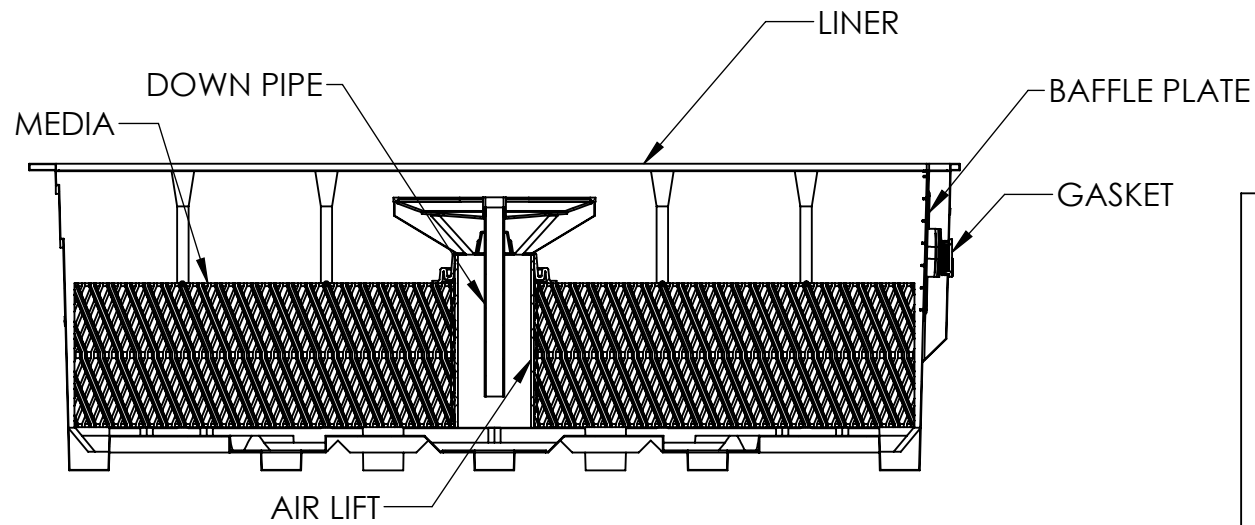


REVISIONS		
REV.	DESCRIPTION	DATE
E	REVISED TO CURRENT	6/2/2021

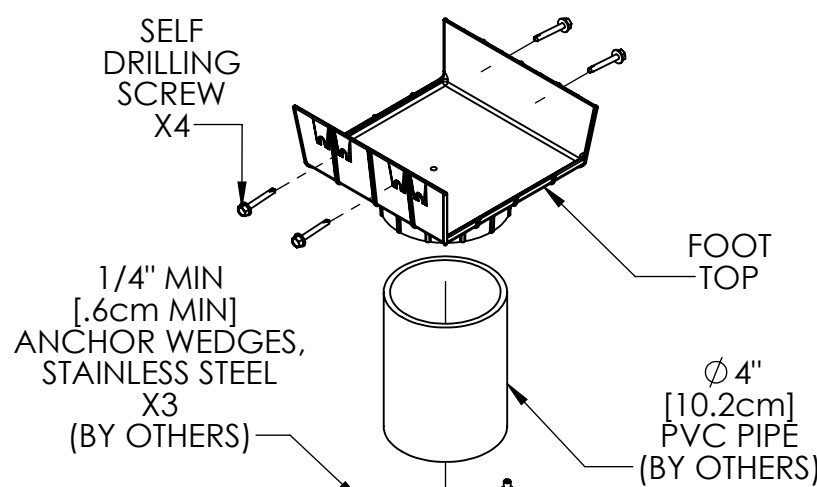
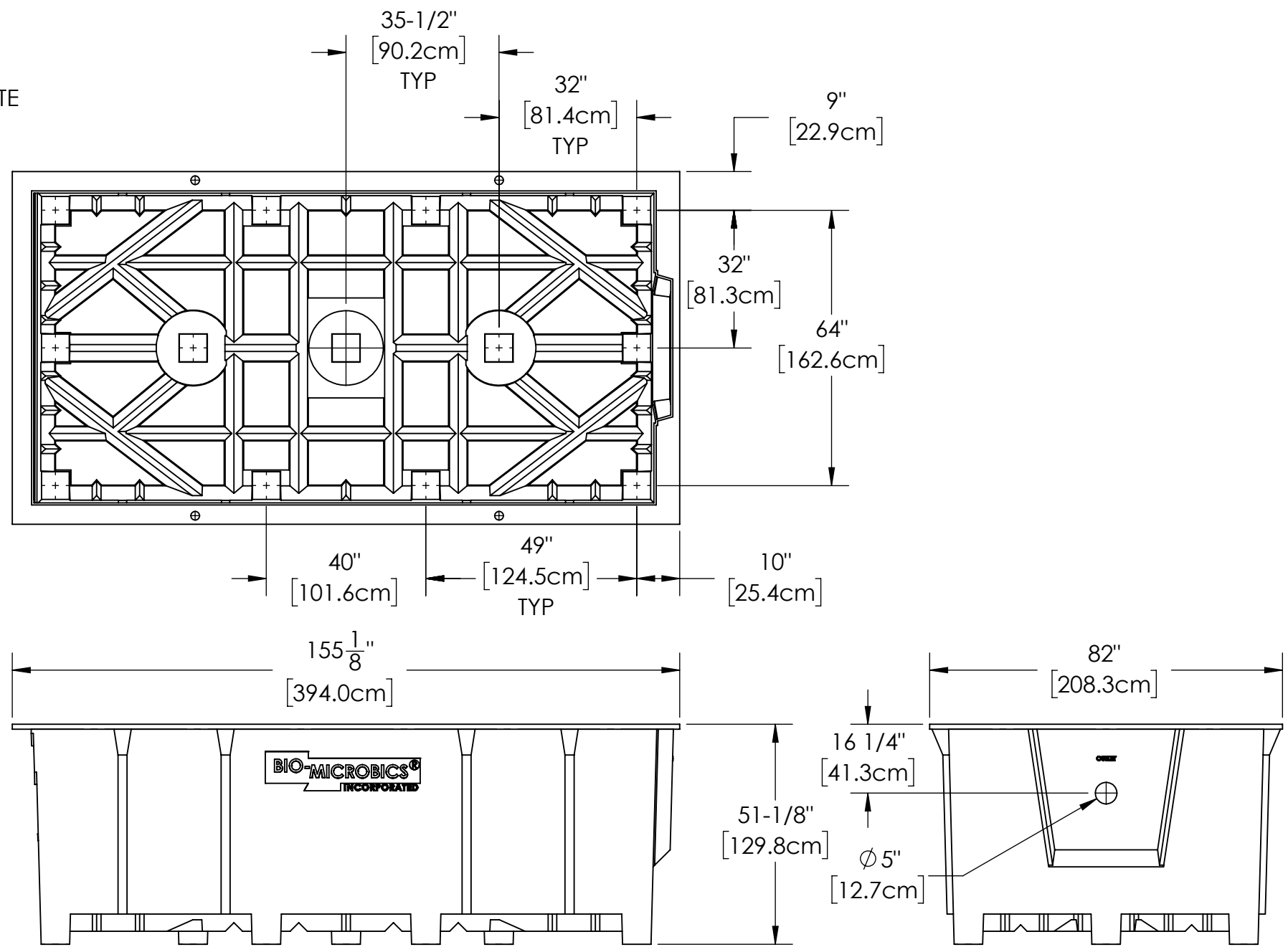


## NitriFAST® 4.5

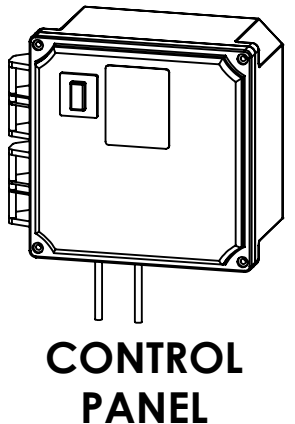
<p><b>PROPRIETARY AND CONFIDENTIAL</b></p> <p>THE INFORMATION CONTAINED IN THIS DRAWING IS THE SOLE PROPERTY OF BIOMICROBICS, INC.. ANY REPRODUCTION IN PART OR AS A WHOLE WITHOUT THE WRITTEN PERMISSION OF BIOMICROBICS, INC. IS PROHIBITED.</p> <p><b>DO NOT SCALE DRAWING</b></p>	<p>UNLESS OTHERWISE SPECIFIED DIMENSIONS ARE IN INCHES AND TOLERANCES ARE AS FOLLOWS</p> <p>X° ±1°  X ± .50  XX ± .25</p>		
	<p>DRAWN BY: CTD</p> <p>DATE: 6/2/2021</p>	<p>DESCRIPTION NITRIFAST 4.5 UNIT VIEW</p>	
<p>SHEET 1 OF 5</p>	<p>APPROVED BY: MSH</p> <p>APPROVED DATE: 6/2/2021</p>	<p>PART NUMBER 600-FINNTF4.5</p>	<p>REV E</p>
<p>SCALE: 1:32</p>	<p>SIZE: B</p>		



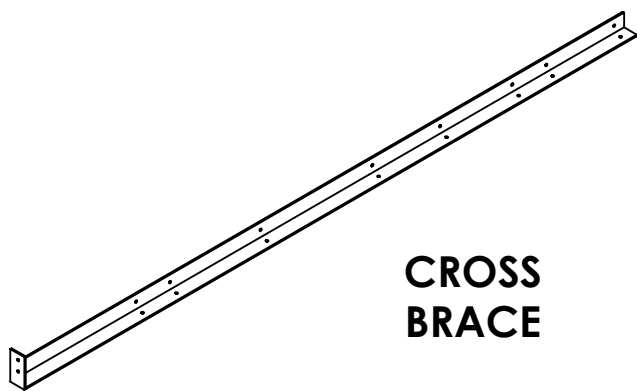
RECYCLE TROUGH NOT SHOWN



OPTIONAL FEET




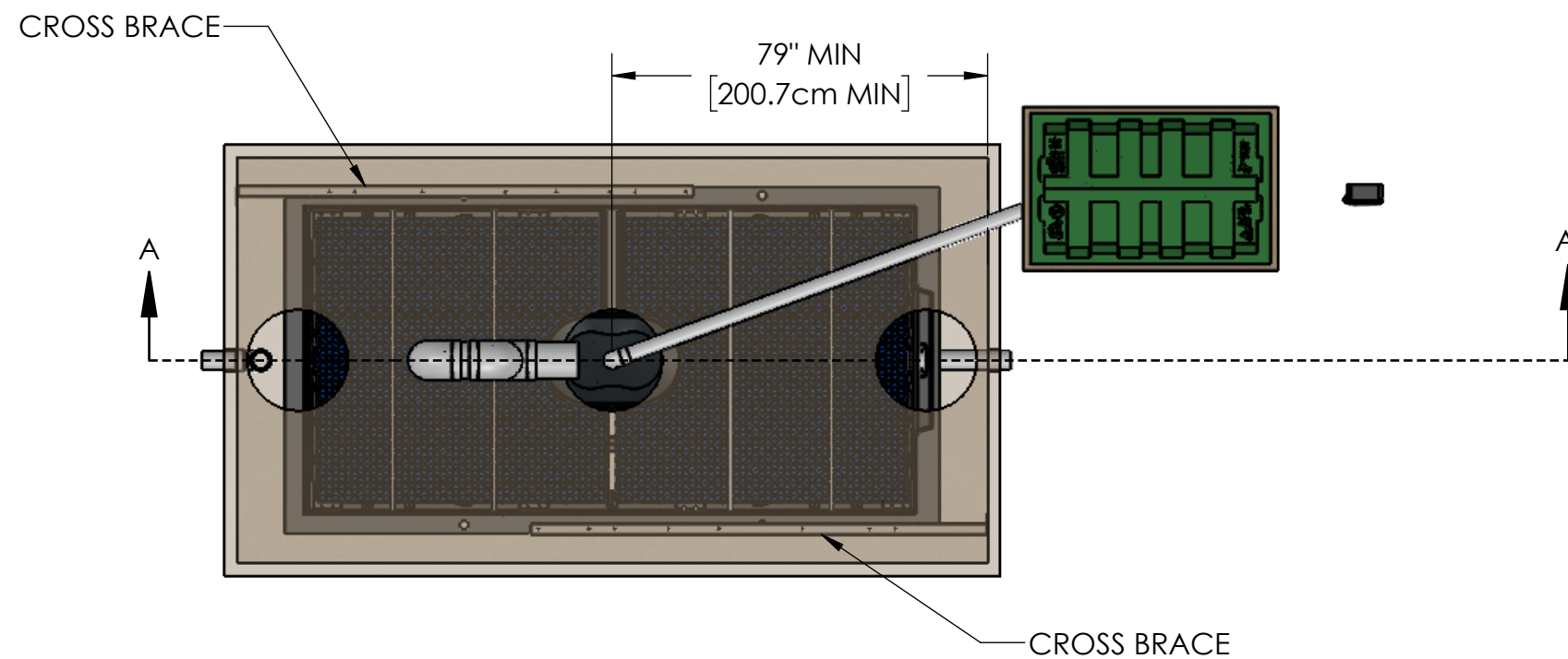
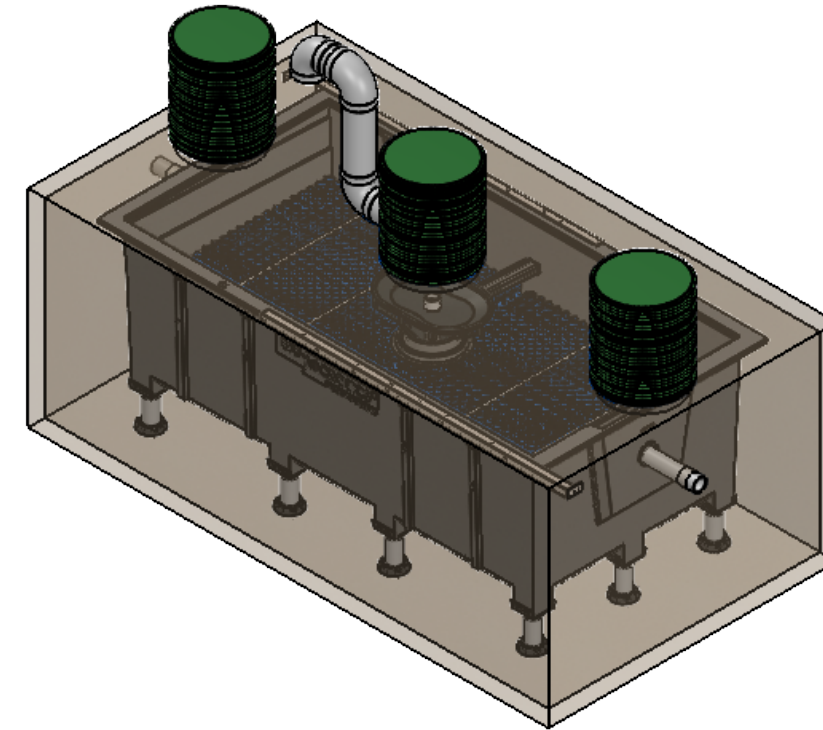
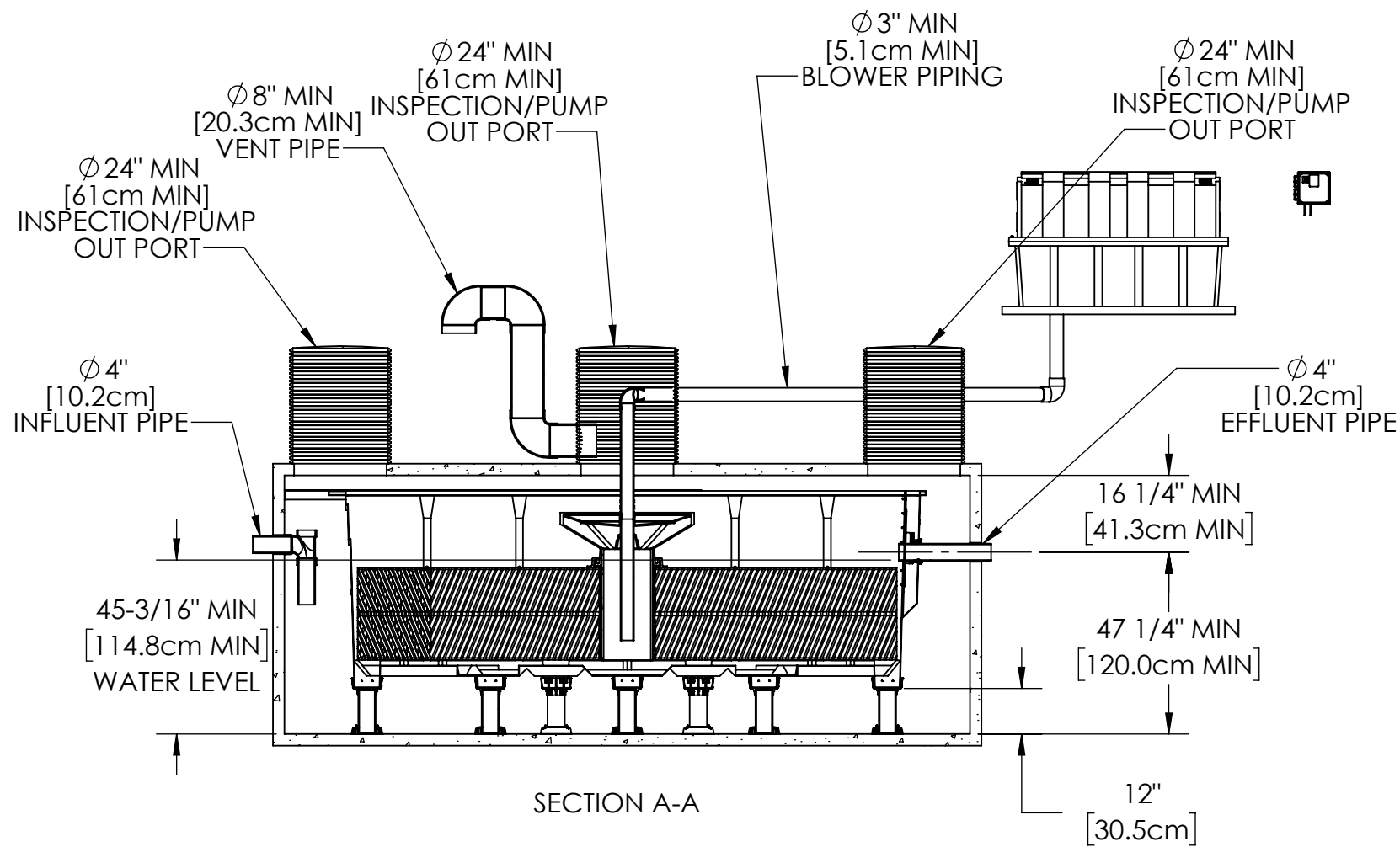
CONTROL PANEL



CROSS BRACE


**NOTES:**  
1. ITEMS ARE DEPICTIONS AND MAY VARY IN APPEARANCE.

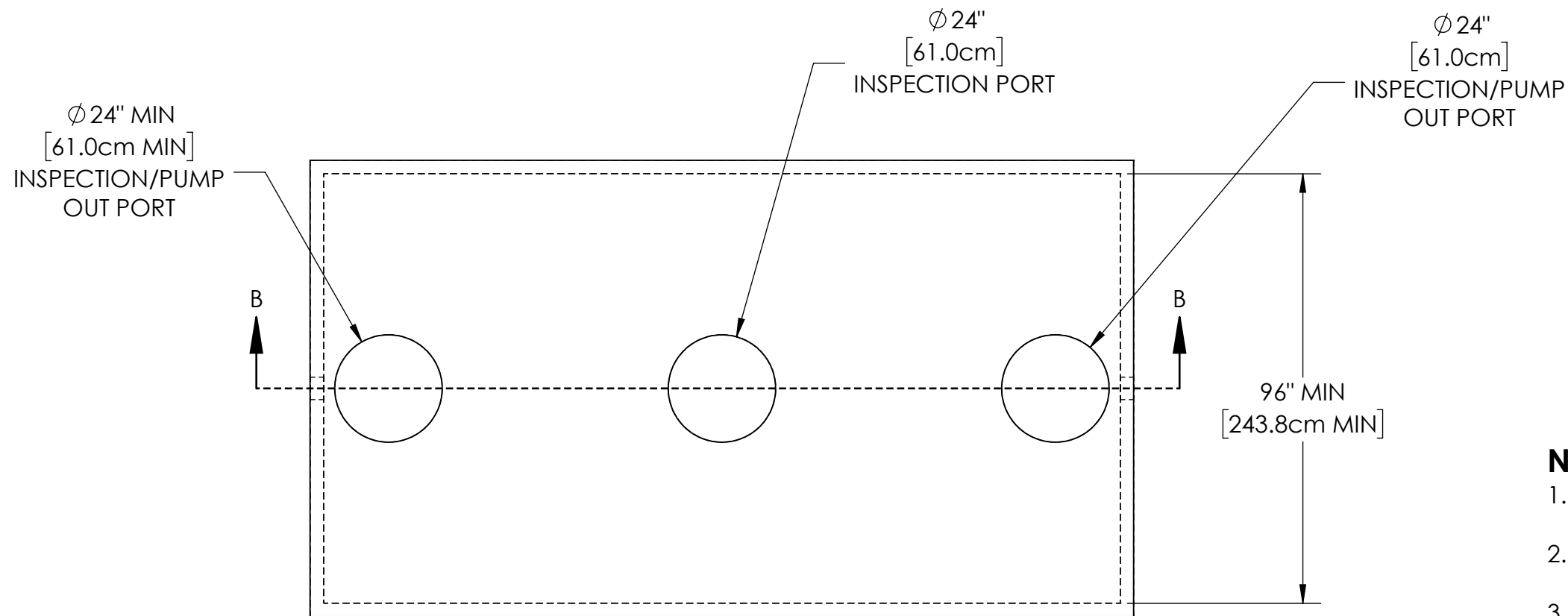
<b>PROPRIETARY AND CONFIDENTIAL</b> THE INFORMATION CONTAINED IN THIS DRAWING IS THE SOLE PROPERTY OF BIOMICROBICS, INC.. ANY REPRODUCTION IN PART OR AS A WHOLE WITHOUT THE WRITTEN PERMISSION OF BIOMICROBICS, INC. IS PROHIBITED.		UNLESS OTHERWISE SPECIFIED DIMENSIONS ARE IN INCHES AND TOLERANCES ARE AS FOLLOWS X° ±1° .X ±.50 .XX ±.25		 <b>BETTER WATER. BETTER WORLD.</b>	
<b>DO NOT SCALE DRAWING</b>		DRAWN BY: CTD			
SHEET 2 OF 5		DATE: 6/2/2021		PART NUMBER	
SCALE: 1:32	SIZE: B	APPROVED BY: MSH		600-FINNTF4.5	
		APPROVED DATE: 6/2/2021		REV E	



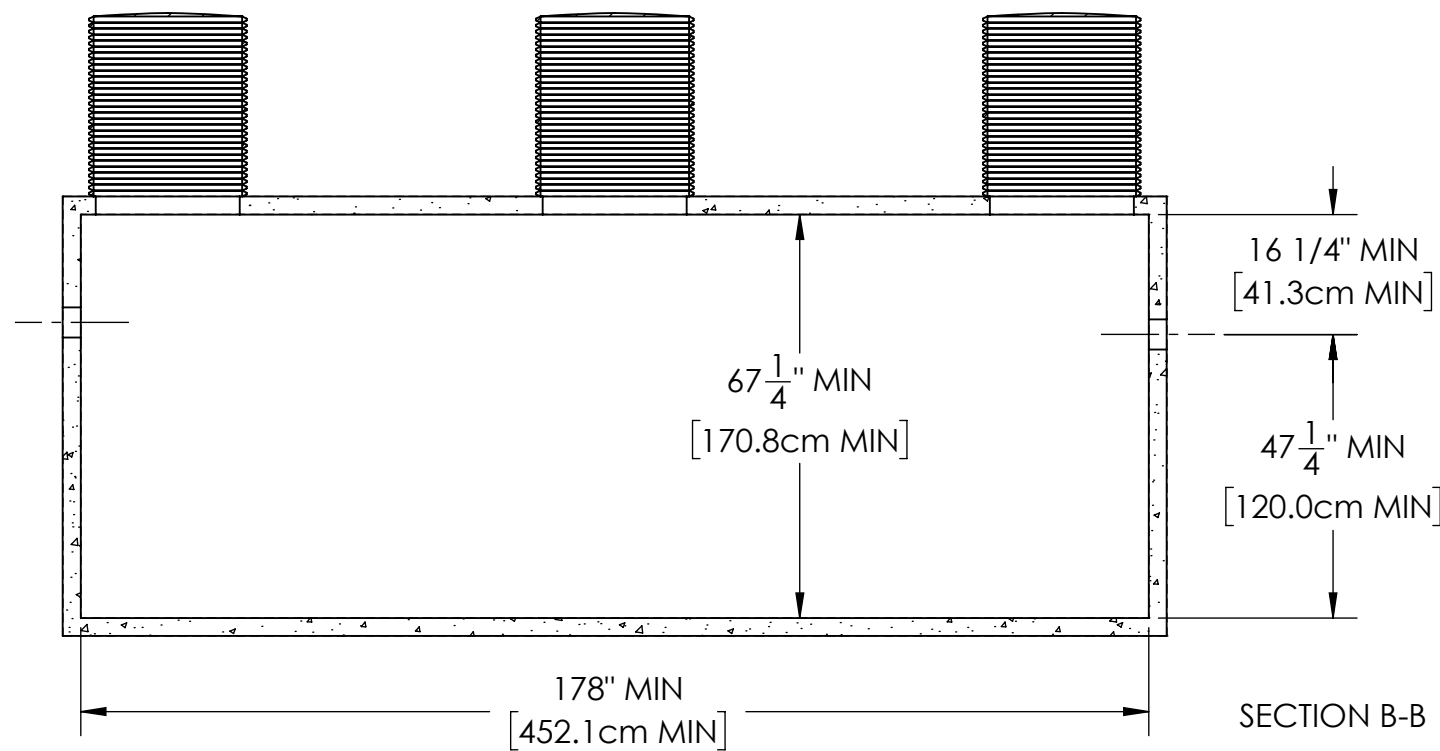
**NOTES:**

1. AIRLINE PIPING TO FAST® SHOULD NOT EXCEED 100 FT (30M) TOTAL LENGTH AND SHOULD HAVE A MAXIMUM OF 4 ELBOWS IN THE PIPING SYSTEM. FOR DISTANCES GREATER THAN 100 FT (30M) CONSULT FACTORY.
2. IF LESS THAN THE SPECIFIED MINIMUMS ARE CONSIDERED NECESSARY, CONSULT FACTORY FOR GUIDANCE.
3. SPECIALIZED TREATMENT NEEDS MAY REQUIRE SPECIFIC FEATURES TO BE INCORPORATED INTO THE DESIGN. CONSULT FACTORY FOR GUIDANCE.
4. SOME ITEMS REMOVED FOR CLARITY.
5. MINIMUM OF 2.0in [5.1cm] INVERT IS NECESSARY BETWEEN THE INLET AND OUTLET OF EACH ZONE FOR GRAVITY FLOW SYSTEMS.
6. THE CROSS BRACES SHOULD BE INSTALLED TO CONNECT THE LINER TO THE SIDE OF THE TANK, PREVENTING LATERAL MOVEMENT.

<p><b>PROPRIETARY AND CONFIDENTIAL</b></p> <p>THE INFORMATION CONTAINED IN THIS DRAWING IS THE SOLE PROPERTY OF BIOMICROBICS, INC.. ANY REPRODUCTION IN PART OR AS A WHOLE WITHOUT THE WRITTEN PERMISSION OF BIOMICROBICS, INC. IS PROHIBITED.</p> <p><b>DO NOT SCALE DRAWING</b></p>		<p>UNLESS OTHERWISE SPECIFIED DIMENSIONS ARE IN INCHES AND TOLERANCES ARE AS FOLLOWS</p> <p>X° ± 1° .X ± .50 .XX ± .25</p>		 <p>BETTER WATER. BETTER WORLD.</p>	
		<p>DRAWN BY: CTD</p> <p>DATE: 6/2/2021</p>			
<p>SHEET 3 OF 5</p>		<p>APPROVED BY: MSH</p>		<p>PART NUMBER 600-FINNTF4.5</p>	
<p>SCALE: 1:48</p>	<p>SIZE: B</p>	<p>APPROVED DATE: 6/2/2021</p>		<p>REV E</p>	




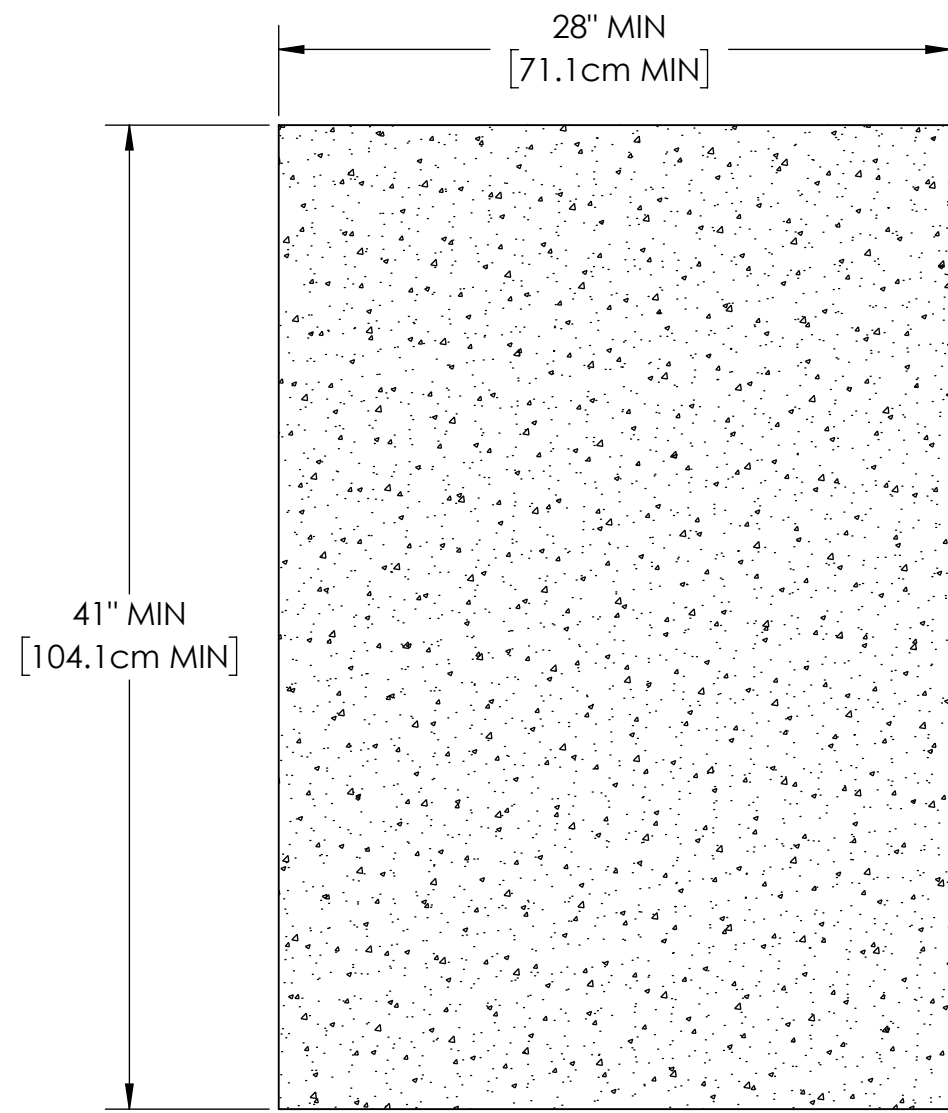
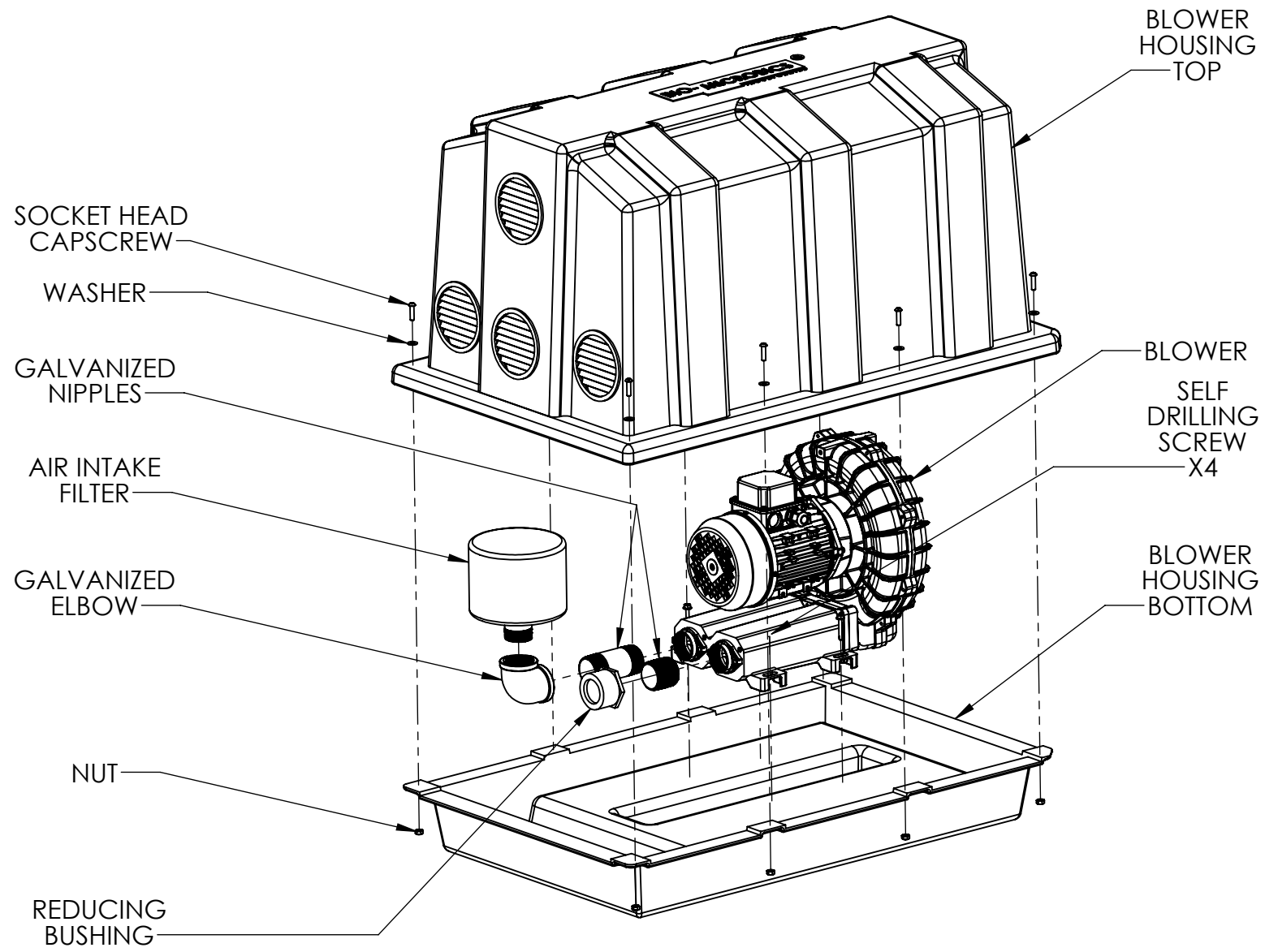
**TREATMENT ZONE**  
4220 GALLON MIN [15974 L MIN]



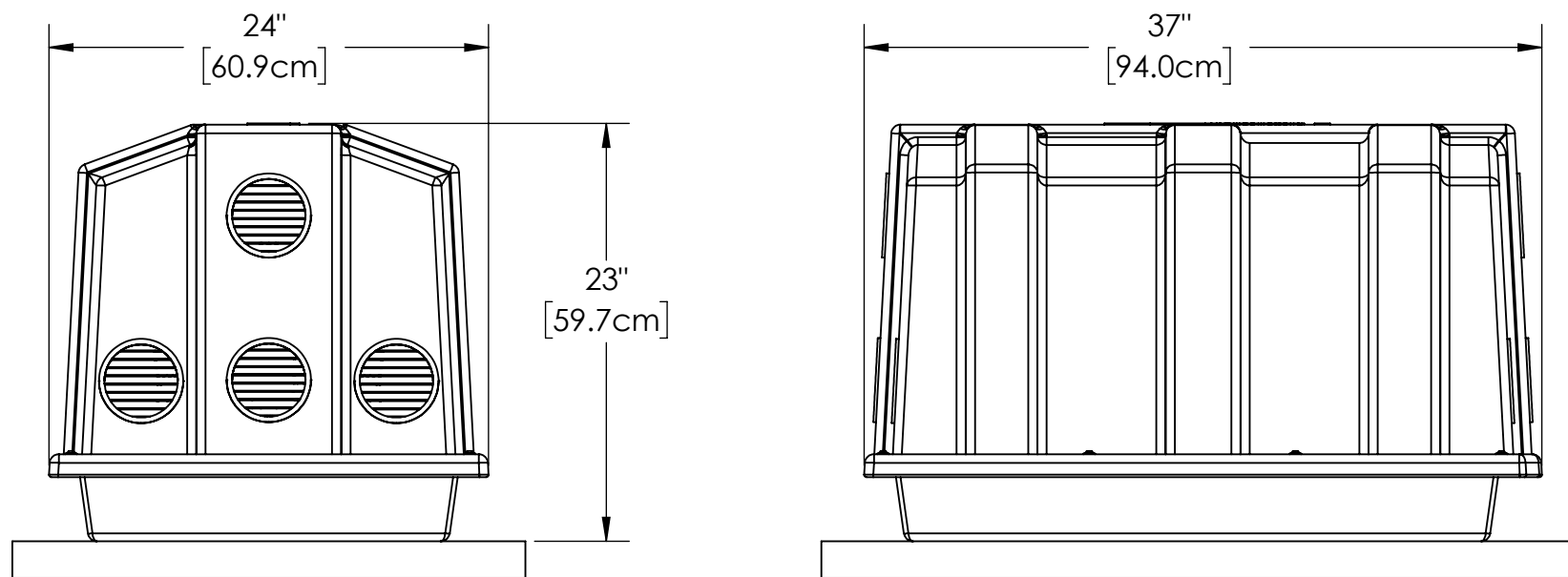
**NOTES:**

1. MINIMUM DIMENSIONS DO NOT DETERMINE OVERALL TANK CAPACITY.
2. INSPECTION/PUMP OUT PORT LOCATIONS MAY VARY DEPENDING ON TANK CONSTRUCTION.
3. ALL APPURTENANCES TO FAST® (E.G. TANKS, ACCESS PORTS, ELECTRICAL, ETC.) MUST CONFORM TO ALL APPLICABLE COUNTY, STATE, PROVINCE, AND LOCAL PLUMBING AND ELECTRICAL CODES.
4. PUMP OUT ACCESS SHALL BE ADEQUATE TO THOROUGHLY CLEAN OUT THE TANK.
5. IF LESS THAN THE SPECIFIED MINIMUMS ARE CONSIDERED NECESSARY, CONSULT FACTORY FOR GUIDANCE.
6. SPECIALIZED TREATMENT NEEDS MAY REQUIRE SPECIFIC FEATURES TO BE INCORPORATED INTO THE DESIGN. CONSULT FACTORY FOR GUIDANCE.
7. MINIMUM OF 2.0in [5.1cm] INVERT IS NECESSARY BETWEEN THE INLET AND OUTLET OF THE TANK FOR GRAVITY FLOW SYSTEMS.
8. TANK VOLUMES MAY VARY BY APPLICATION AND JURISDICTION.
9. NTRIFAST UNITS CAN GO INTO OTHER THAN SHOWN TYPES OF TANKS, NON RECTANGULAR, PLASTIC, ETC.

<b>PROPRIETARY AND CONFIDENTIAL</b> THE INFORMATION CONTAINED IN THIS DRAWING IS THE SOLE PROPERTY OF BIOMICROBICS, INC.. ANY REPRODUCTION IN PART OR AS A WHOLE WITHOUT THE WRITTEN PERMISSION OF BIOMICROBICS, INC. IS PROHIBITED. <b>DO NOT SCALE DRAWING</b>	UNLESS OTHERWISE SPECIFIED DIMENSIONS ARE IN INCHES AND TOLERANCES ARE AS FOLLOWS $X^{\circ} \pm 1^{\circ}$ $.X \pm .50$ $.XX \pm .25$	 BETTER WATER. BETTER WORLD.™	
	DRAWN BY: CTD DATE: 6/2/2021		
SHEET 4 OF 5	APPROVED BY: MSH APPROVED DATE: 6/2/2021	PART NUMBER 600-FINNTF4.5	REV E
SCALE: 1:48	SIZE: B		




**BLOWER PAD**



**NOTES:**

1. SOME NITRIFAST CONFIGURATIONS MAY REQUIRE DIFFERENT BLOWER HOUSINGS.
2. BLOWER MUST BE LOCATED ABOVE FLOOD LEVELS.

<b>PROPRIETARY AND CONFIDENTIAL</b> THE INFORMATION CONTAINED IN THIS DRAWING IS THE SOLE PROPERTY OF BIOMICROBICS, INC.. ANY REPRODUCTION IN PART OR AS A WHOLE WITHOUT THE WRITTEN PERMISSION OF BIOMICROBICS, INC. IS PROHIBITED. <b>DO NOT SCALE DRAWING</b>	UNLESS OTHERWISE SPECIFIED DIMENSIONS ARE IN INCHES AND TOLERANCES ARE AS FOLLOWS $X^{\circ} \pm 1^{\circ}$ $.X \pm .50$ $.XX \pm .25$	 BETTER WATER. BETTER WORLD.
	DRAWN BY: <b>CTD</b> DATE: <b>6/2/2021</b>	
<b>SHEET 5 OF 5</b>	APPROVED BY: <b>MSH</b> APPROVED DATE: <b>6/2/2021</b>	PART NUMBER <b>600-FINNTF4.5</b>
SCALE: <b>1:32</b>	SIZE: <b>B</b>	REV <b>E</b>