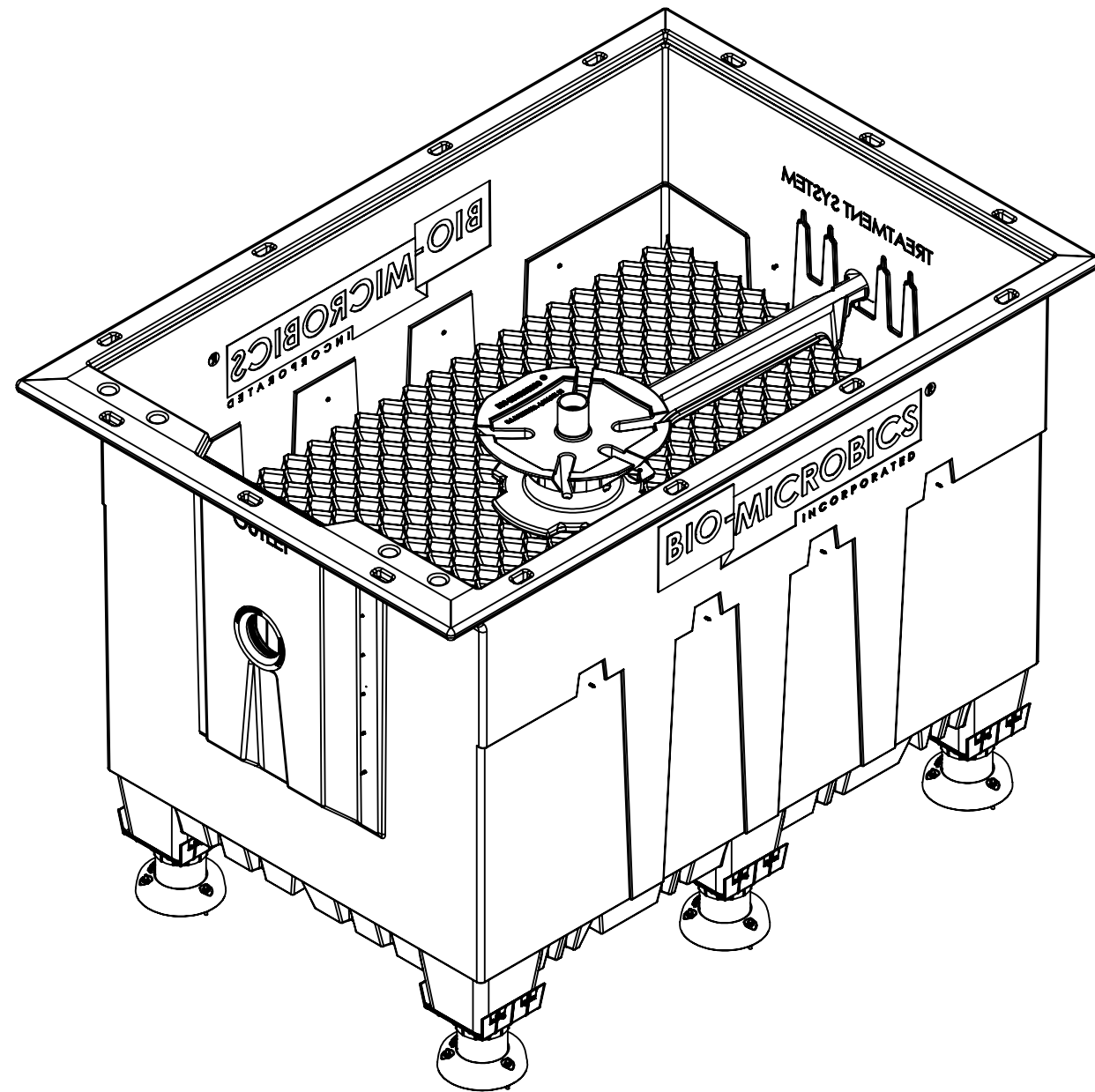
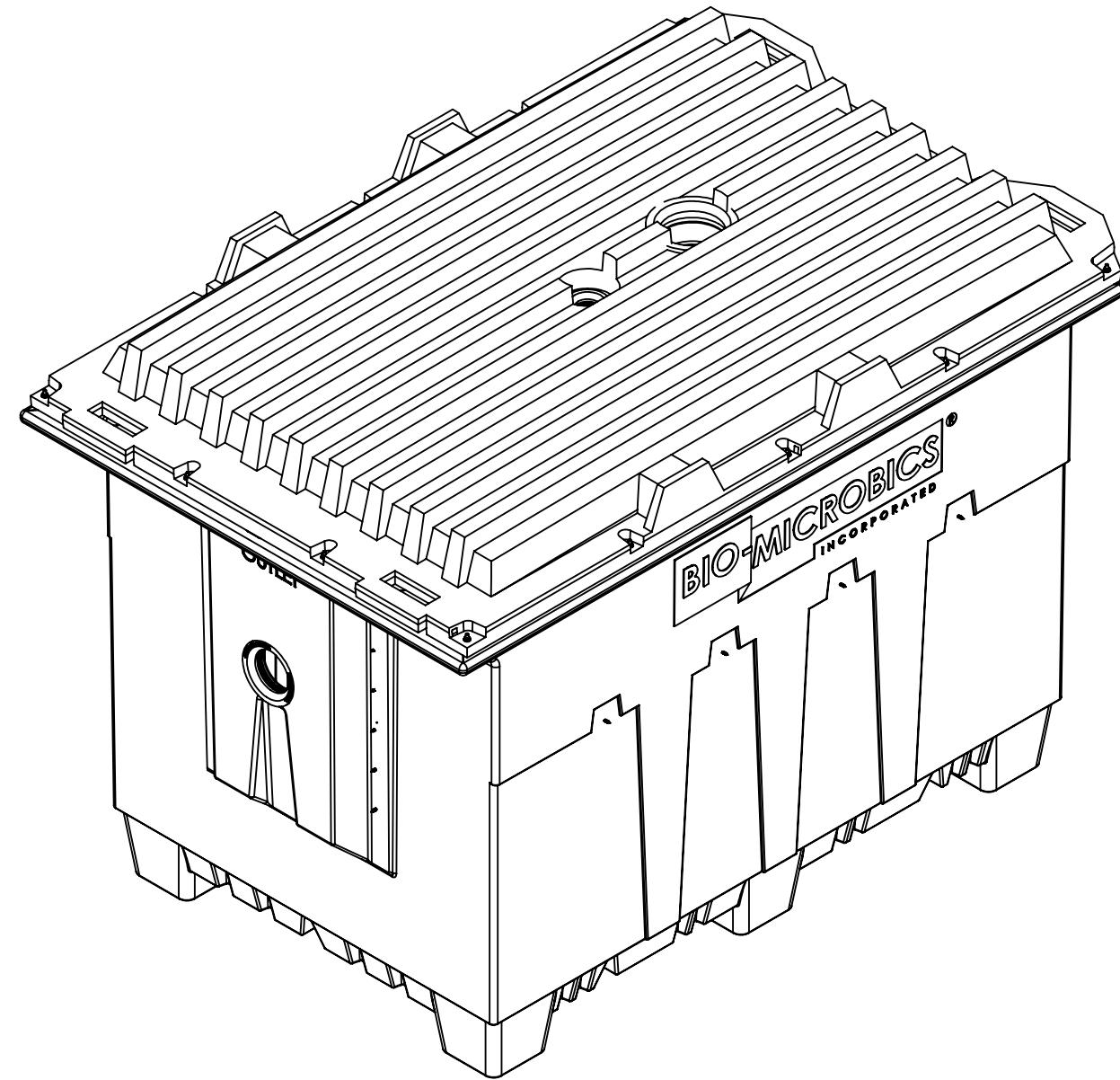



REVISIONS		
REV.	DESCRIPTION	DATE
G	RELEASED TO CURRENT	9/10/2020
H	REVISED DIMENSIONS	6/8/2023

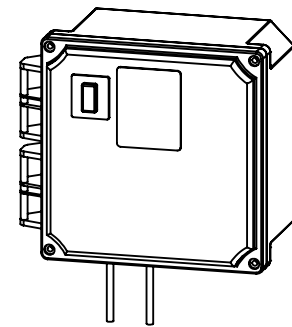
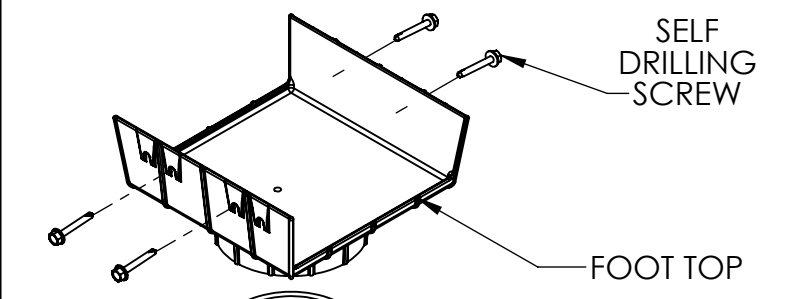
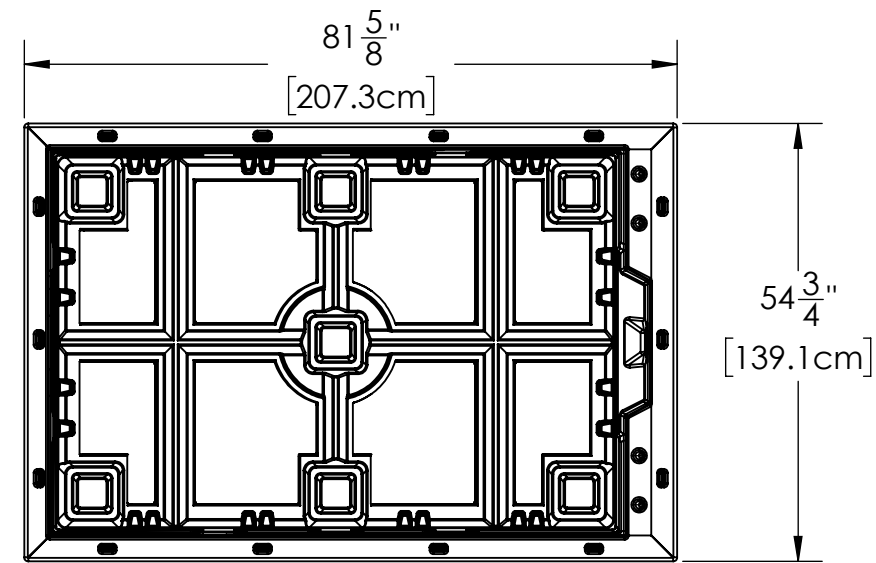
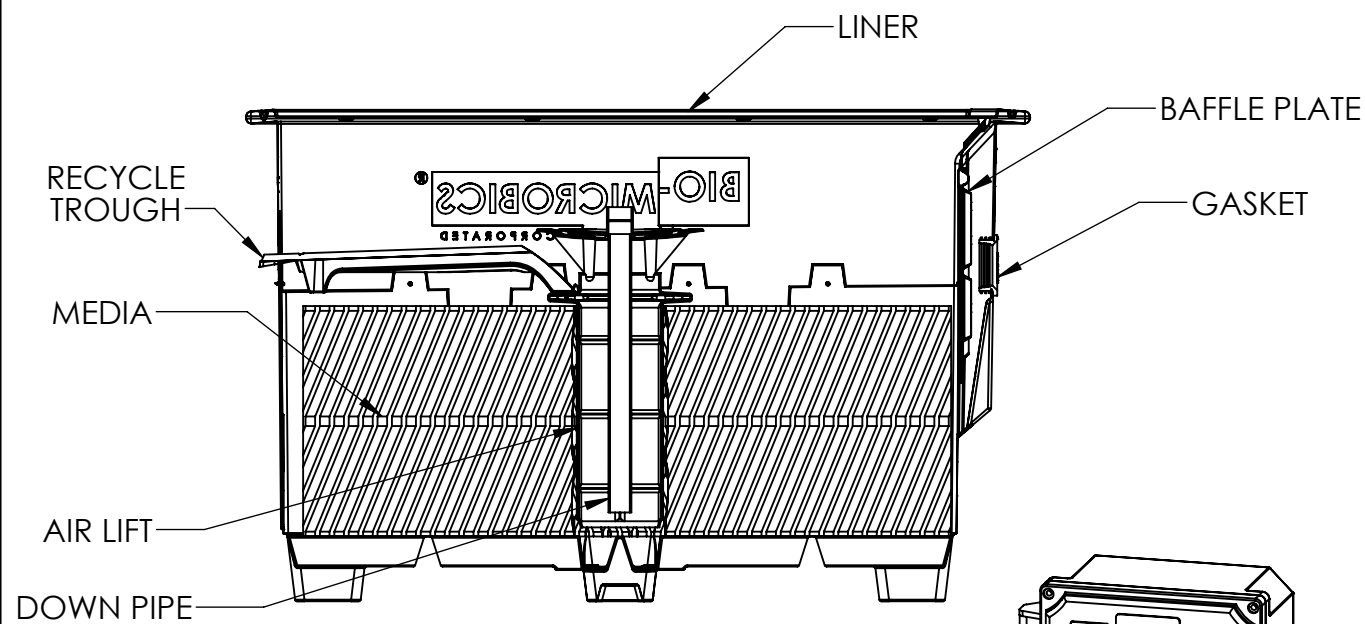


HighStrengthFAST® 1.5 WITH FEET

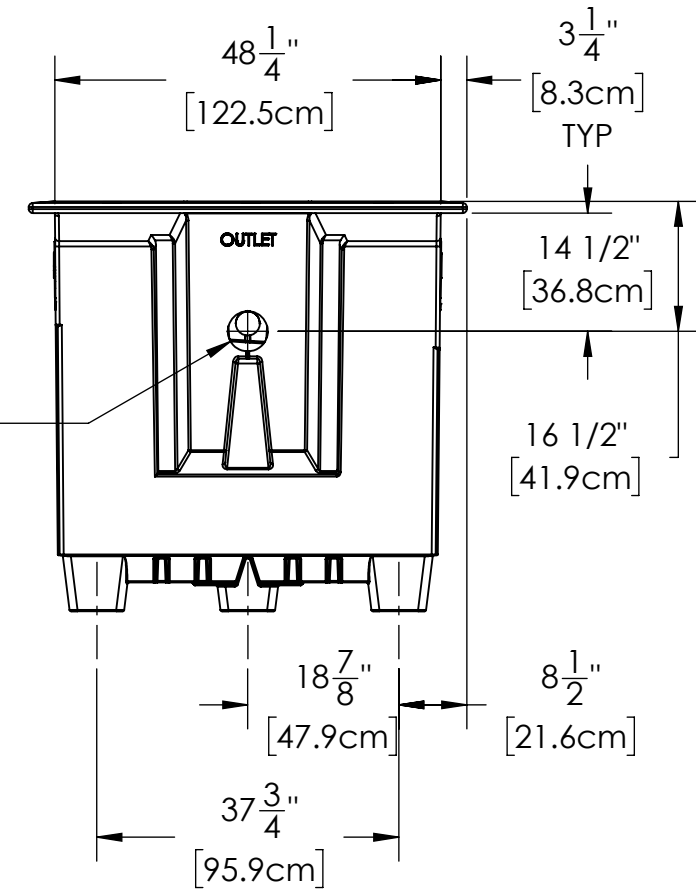
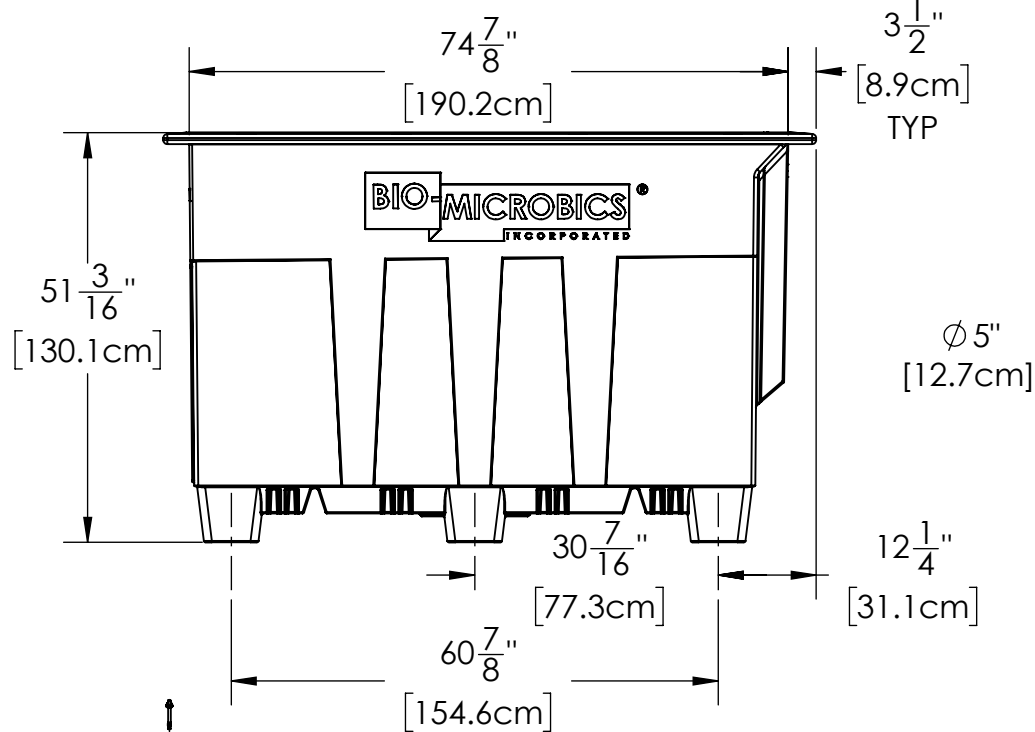


HighStrengthFAST® 1.5 WITH LID

<p>PROPRIETARY AND CONFIDENTIAL</p> <p>THE INFORMATION CONTAINED IN THIS DRAWING IS THE SOLE PROPERTY OF BIOMICROBICS, INC.. ANY REPRODUCTION IN PART OR AS A WHOLE WITHOUT THE WRITTEN PERMISSION OF BIOMICROBICS, INC. IS PROHIBITED.</p> <p>DO NOT SCALE DRAWING</p>	<p>UNLESS OTHERWISE SPECIFIED DIMENSIONS ARE IN INCHES AND TOLERANCES ARE AS FOLLOWS</p> <p>X° ± 1° .X ± .50 .XX ± .25</p>	
	<p>DRAWN BY: ESG</p> <p>DATE: 3/14/2022</p>	
<p>SHEET 1 OF 6</p>	<p>APPROVED BY: MSH</p> <p>APPROVED DATE: 3/14/2022</p>	<p>PART NUMBER 600-FINHSF1.5</p>
<p>SCALE: 1:15</p>	<p>SIZE: B</p>	<p>REV H</p>



CONTROL PANEL



Ø 4" [10.2cm] PVC PIPE (BY OTHERS)

1/4" MIN [.6cm MIN] ANCHOR WEDGES, STAINLESS STEEL X3 (BY OTHERS)

FOOT BOTTOM

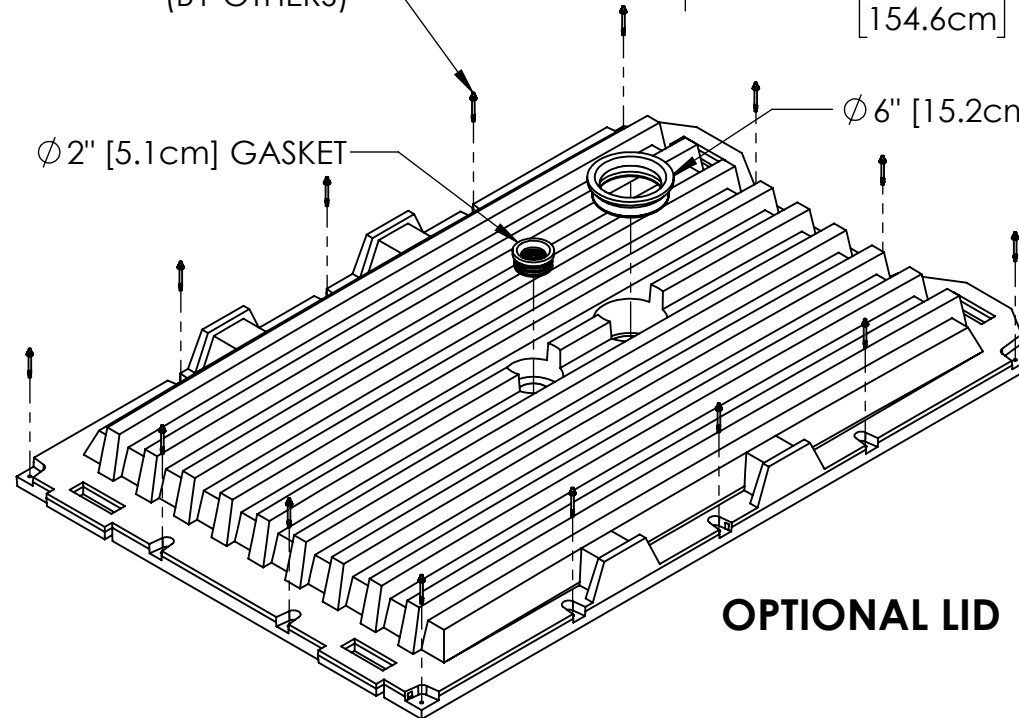
Ø 8" [20.3cm]

OPTIONAL FEET

1/4" MIN [.6cm MIN] TO 3/8" MAX [.9cm MAX] ANCHOR WEDGES, STAINLESS STEEL X14 (BY OTHERS)

Ø 2" [5.1cm] GASKET

Ø 6" [15.2cm] GASKET

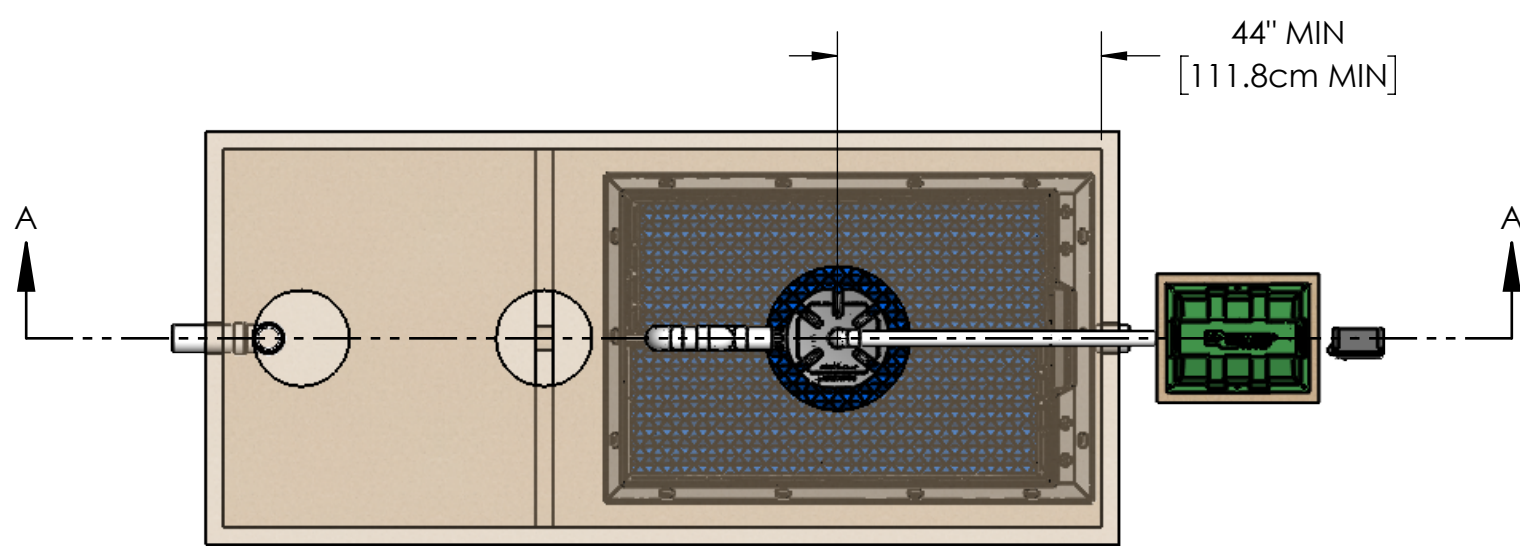
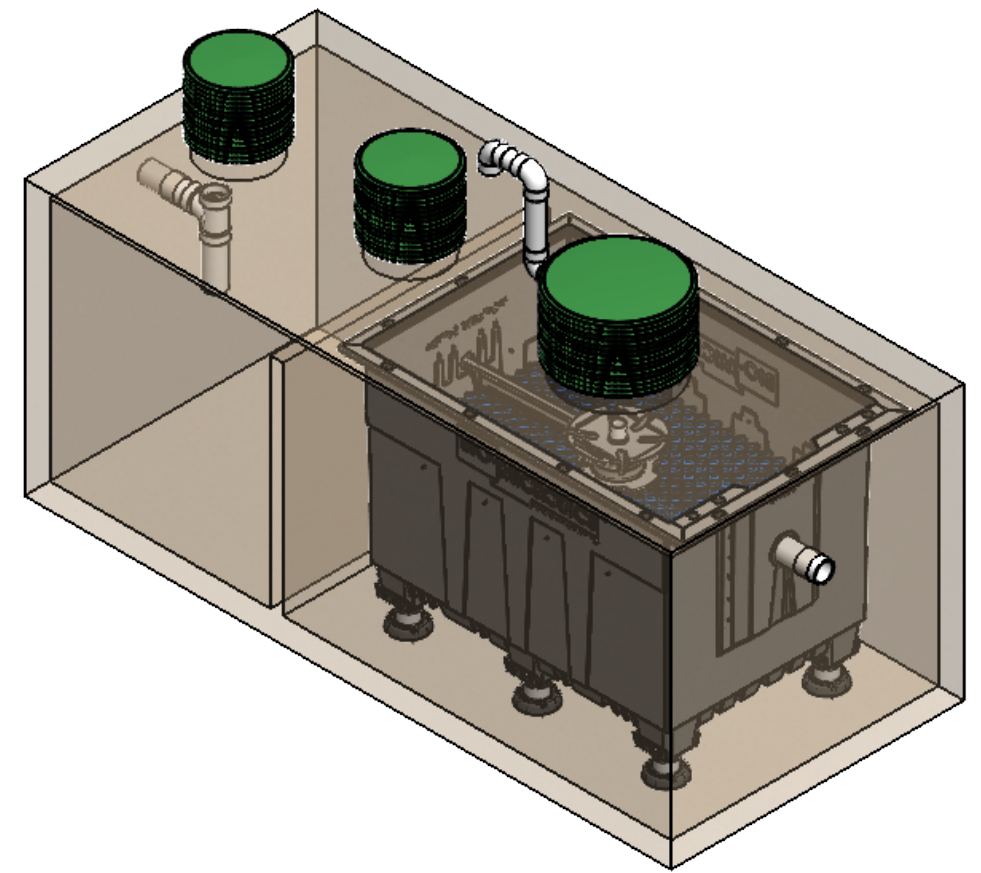
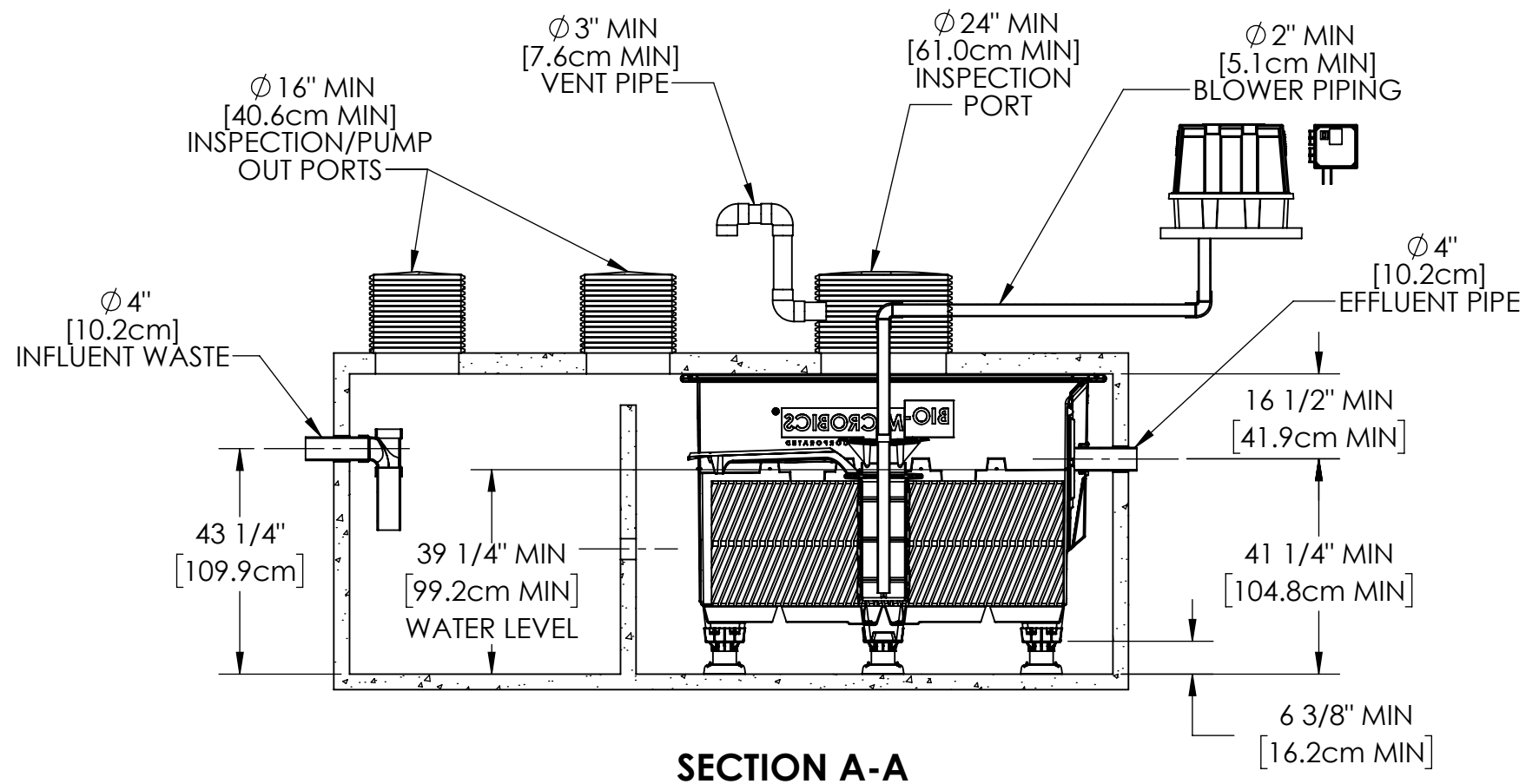


OPTIONAL LID

NOTES:

1. ITEMS ARE DEPICTIONS AND MAY VARY IN APPEARANCE.

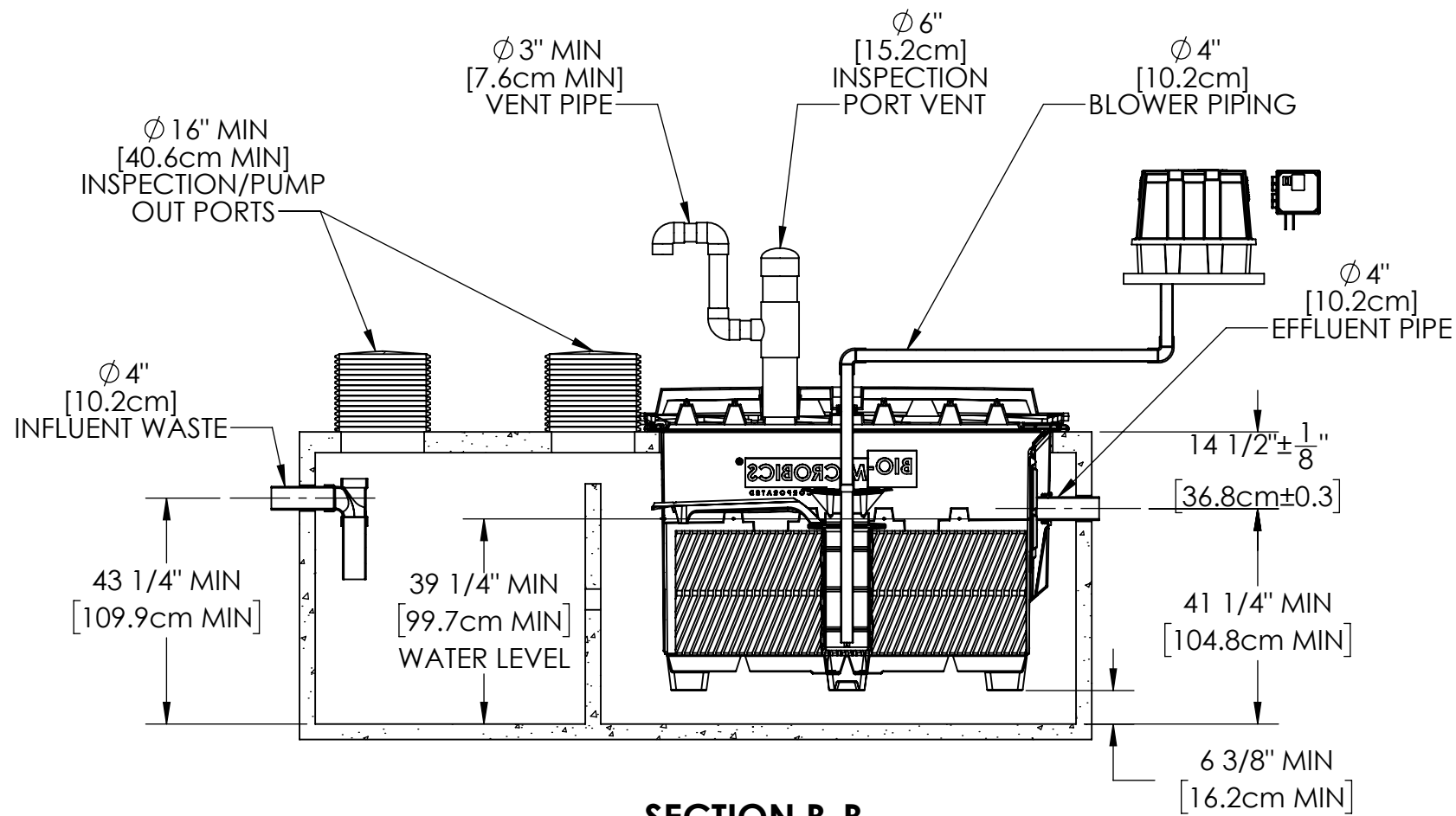
<p>PROPRIETARY AND CONFIDENTIAL</p> <p>THE INFORMATION CONTAINED IN THIS DRAWING IS THE SOLE PROPERTY OF BIOMICROBICS, INC.. ANY REPRODUCTION IN PART OR AS A WHOLE WITHOUT THE WRITTEN PERMISSION OF BIOMICROBICS, INC. IS PROHIBITED.</p> <p>DO NOT SCALE DRAWING</p>		<p>UNLESS OTHERWISE SPECIFIED DIMENSIONS ARE IN INCHES AND TOLERANCES ARE AS FOLLOWS</p> <p>X° ± 1° X ± .50 .XX ± .25</p>	
<p>SHEET 2 OF 6</p>		<p>DRAWN BY: ESG</p> <p>DATE: 3/14/2022</p> <p>APPROVED BY: MSH</p> <p>APPROVED DATE: 3/14/2022</p>	
SCALE: N/A	SIZE: B		REV: H



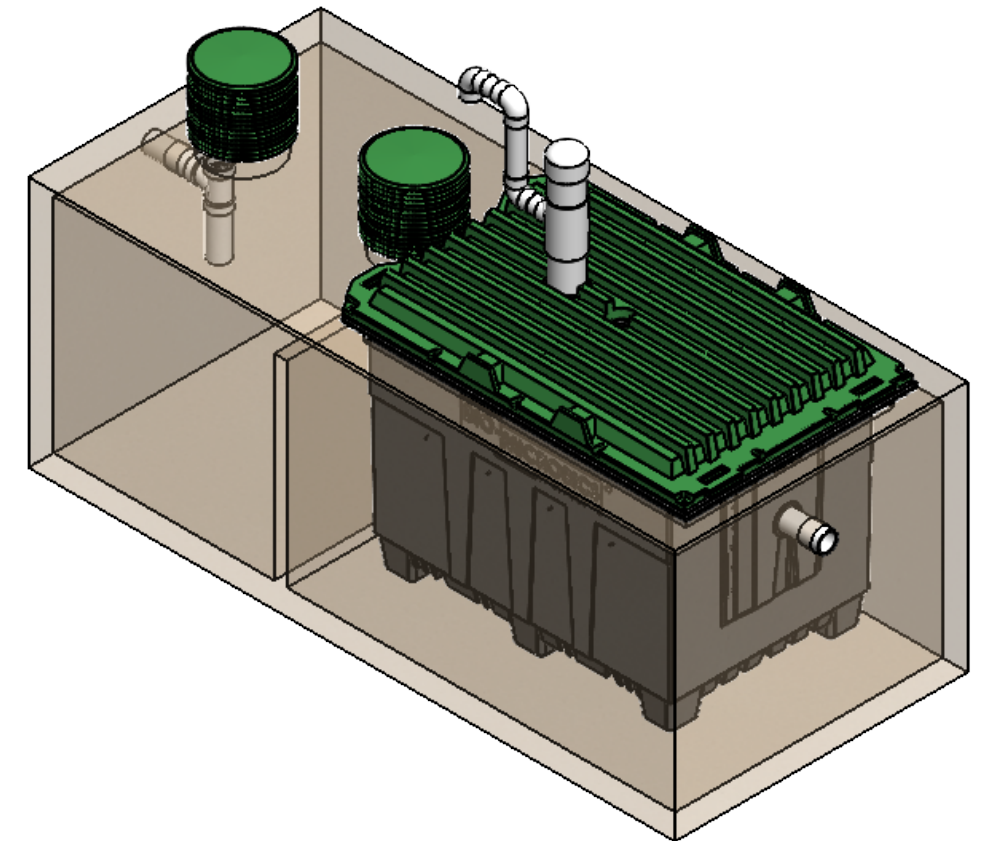
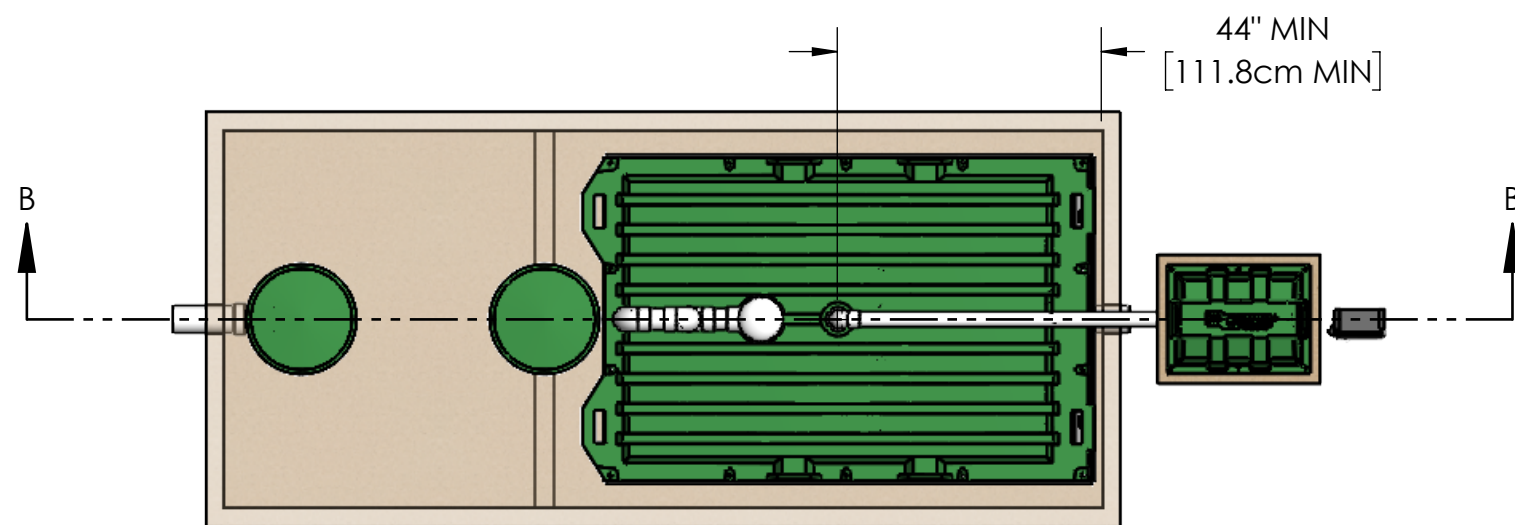
NOTES:

1. AIRLINE PIPING TO FAST@ SHOULD NOT EXCEED 100 FT (30M) TOTAL LENGTH AND SHOULD HAVE A MAXIMUM OF 4 ELBOWS IN THE PIPING SYSTEM. FOR DISTANCES GREATER THAN 100 FT (30M) CONSULT FACTORY.
2. IF LESS THAN THE SPECIFIED MINIMUMS ARE CONSIDERED NECESSARY, CONSULT FACTORY FOR GUIDANCE.
3. SPECIALIZED TREATMENT NEEDS MAY REQUIRE SPECIFIC FEATURES TO BE INCORPORATED INTO THE DESIGN. CONSULT FACTORY FOR GUIDANCE.
4. SOME ITEMS REMOVED FOR CLARITY.
5. MINIMUM OF 2.0in [5.1cm] INVERT IS NECESSARY BETWEEN THE INLET AND OUTLET OF EACH ZONE FOR GRAVITY FLOW SYSTEMS.

<p>PROPRIETARY AND CONFIDENTIAL</p> <p>THE INFORMATION CONTAINED IN THIS DRAWING IS THE SOLE PROPERTY OF BIOMICROBICS, INC.. ANY REPRODUCTION IN PART OR AS A WHOLE WITHOUT THE WRITTEN PERMISSION OF BIOMICROBICS, INC. IS PROHIBITED.</p> <p>DO NOT SCALE DRAWING</p>	<p>UNLESS OTHERWISE SPECIFIED DIMENSIONS ARE IN INCHES AND TOLERANCES ARE AS FOLLOWS</p> <p>X° ± 1° X ± .50 XX ± .25</p>	
	<p>DRAWN BY: ESG</p> <p>DATE: 3/14/2022</p> <p>APPROVED BY: MSH</p> <p>APPROVED DATE: 3/14/2022</p>	
<p>SHEET 3 OF 6</p> <p>SCALE: 1:48</p>	<p>SIZE: B</p>	<p>REV H</p>



SECTION B-B

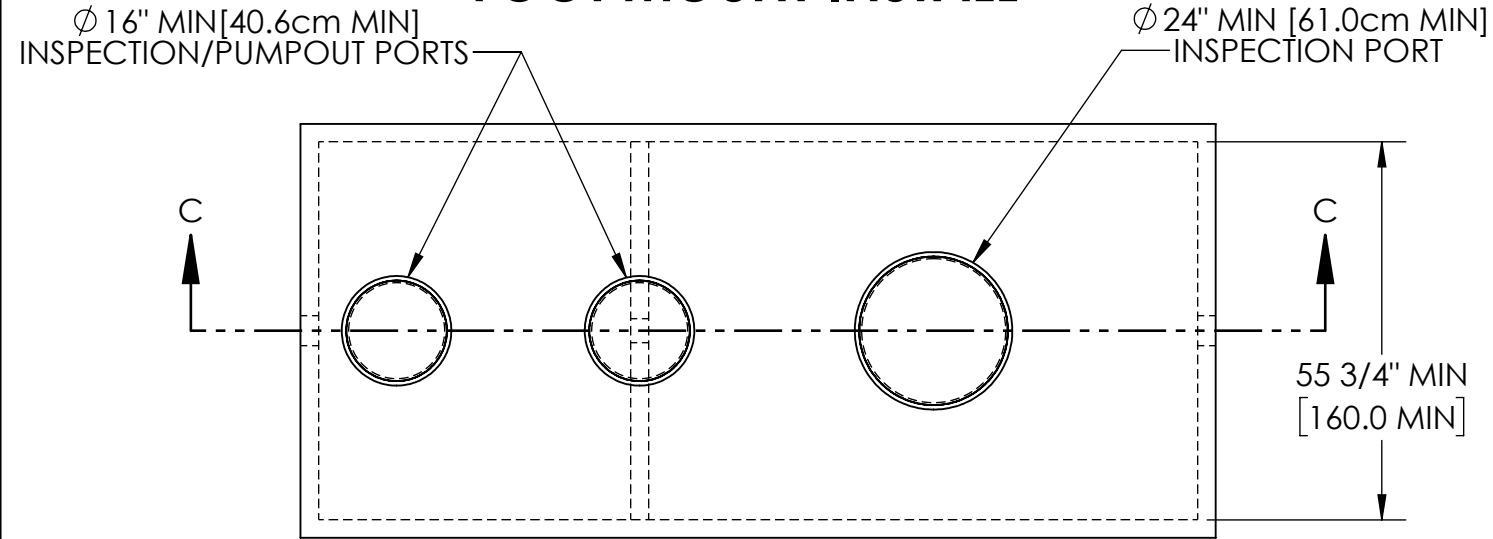


NOTES:

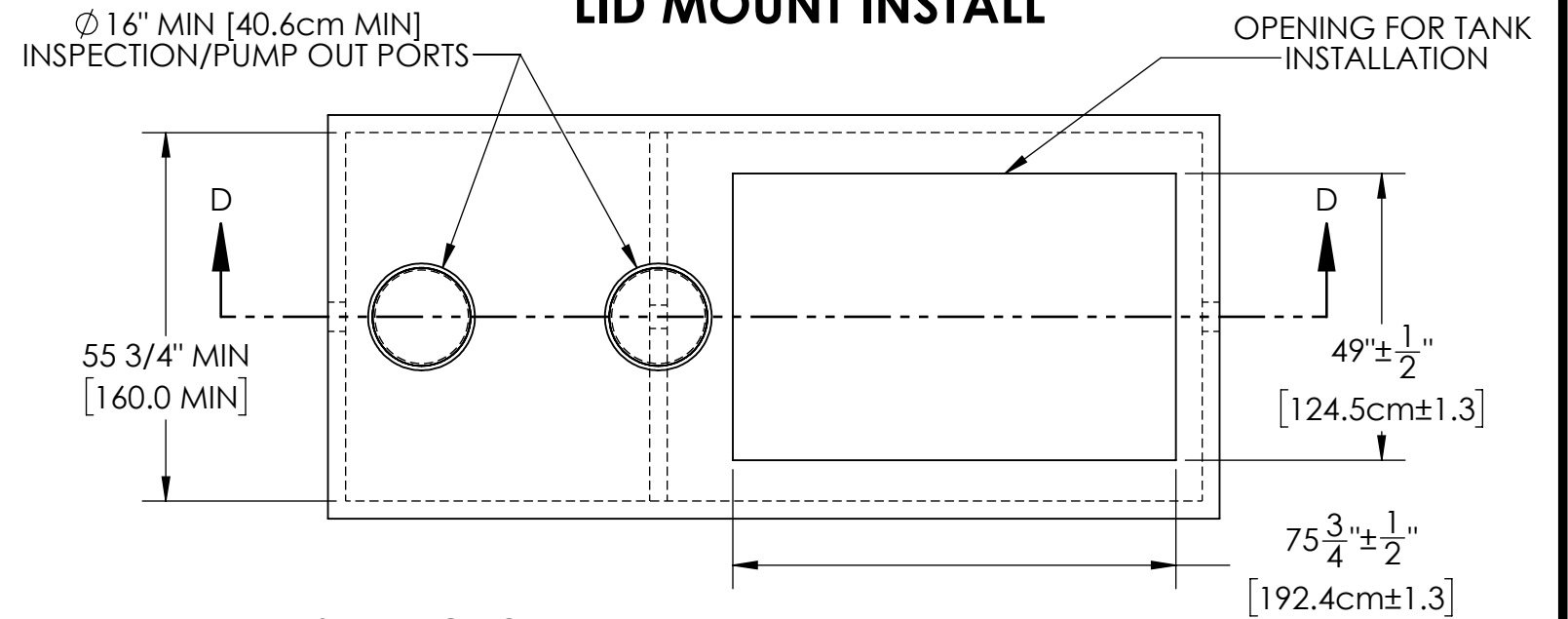
1. AIRLINE PIPING TO FAST® SHOULD NOT EXCEED 100 FT (30M) TOTAL LENGTH AND SHOULD HAVE A MAXIMUM OF 4 ELBOWS IN THE PIPING SYSTEM. FOR DISTANCES GREATER THAN 100 FT (30M) CONSULT FACTORY.
2. IF LESS THAN THE SPECIFIED MINIMUMS ARE CONSIDERED NECESSARY, CONSULT FACTORY FOR GUIDANCE.
3. SPECIALIZED TREATMENT NEEDS MAY REQUIRE SPECIFIC FEATURES TO BE INCORPORATED INTO THE DESIGN. CONSULT FACTORY FOR GUIDANCE.
4. SOME ITEMS REMOVED FOR CLARITY.
5. MINIMUM OF 2.0in [5.1cm] INVERT IS NECESSARY BETWEEN THE INLET AND OUTLET OF EACH ZONE FOR GRAVITY FLOW SYSTEMS.

PROPRIETARY AND CONFIDENTIAL THE INFORMATION CONTAINED IN THIS DRAWING IS THE SOLE PROPERTY OF BIOMICROBICS, INC.. ANY REPRODUCTION IN PART OR AS A WHOLE WITHOUT THE WRITTEN PERMISSION OF BIOMICROBICS, INC. IS PROHIBITED. DO NOT SCALE DRAWING		UNLESS OTHERWISE SPECIFIED DIMENSIONS ARE IN INCHES AND TOLERANCES ARE AS FOLLOWS $X^{\circ} \pm 1^{\circ}$ $.X \pm .50$ $.XX \pm .25$	
SHEET 4 OF 6 SCALE: 1:48		DRAWN BY: ESG DATE: 3/14/2022 APPROVED BY: MSH APPROVED DATE: 3/14/2022	
		SIZE: B	REV H

FOOT MOUNT INSTALL

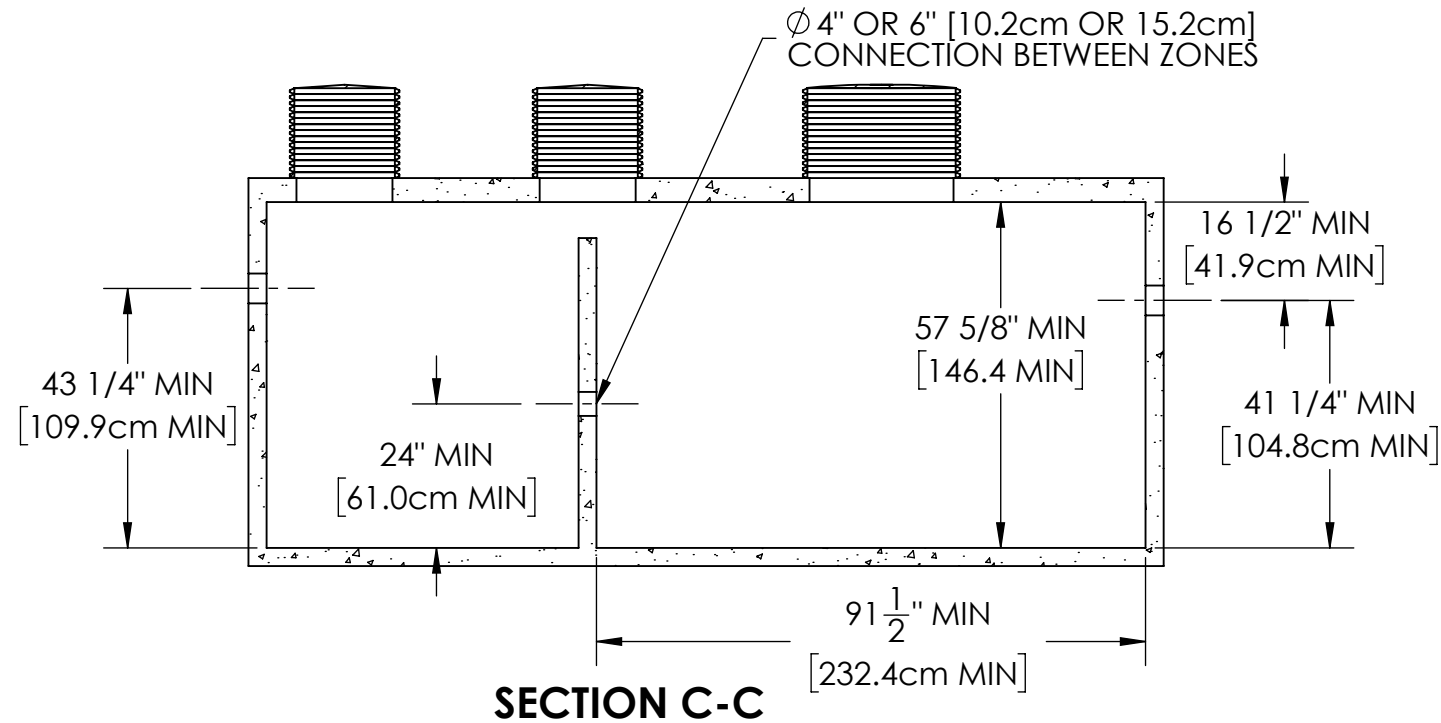


LID MOUNT INSTALL



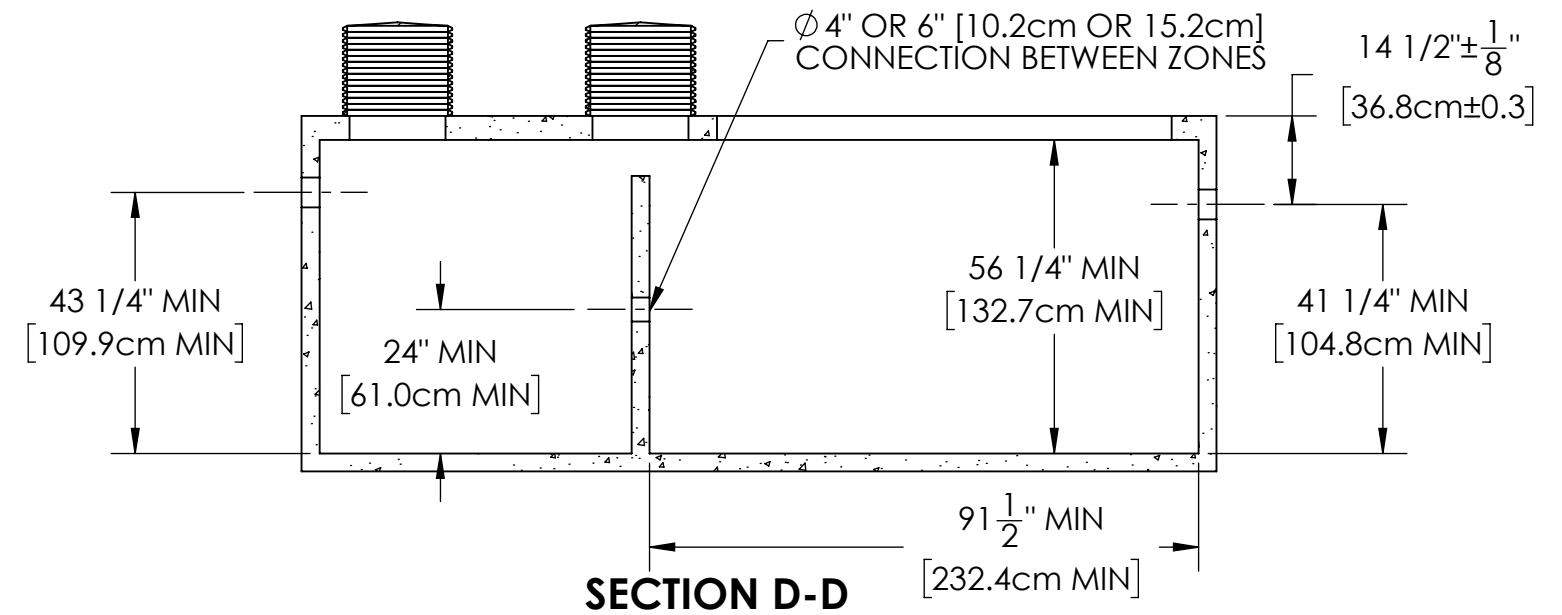
SETTLING ZONE
750 GALLON MIN (2839 L MIN)

TREATMENT ZONE
1125 GALLON MIN (4259 L MIN)




SETTLING ZONE
750 GALLON MIN (2839 L MIN)

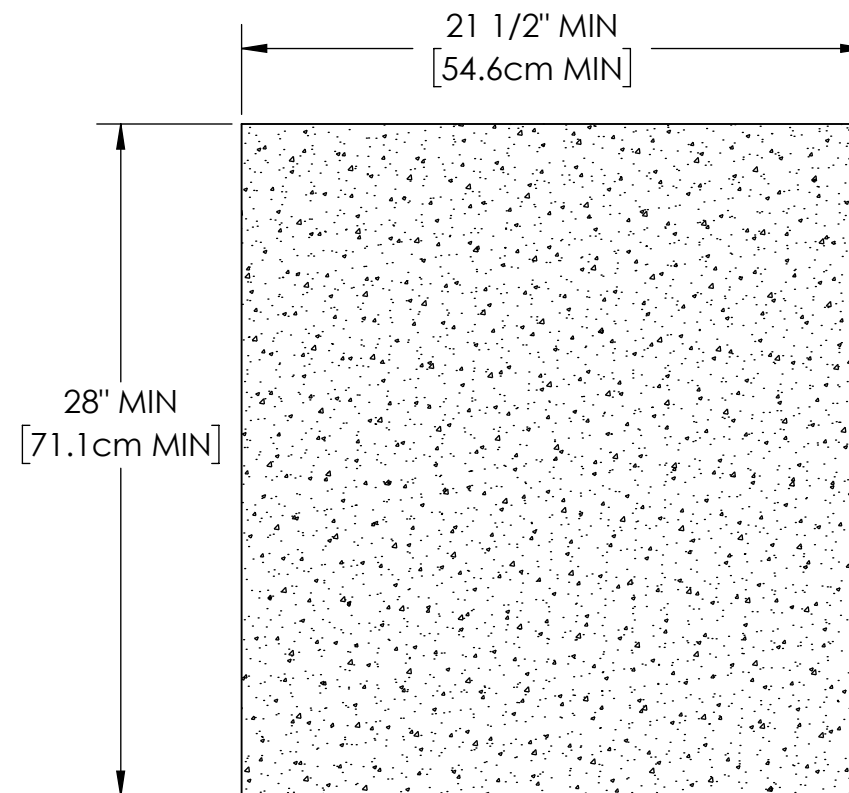
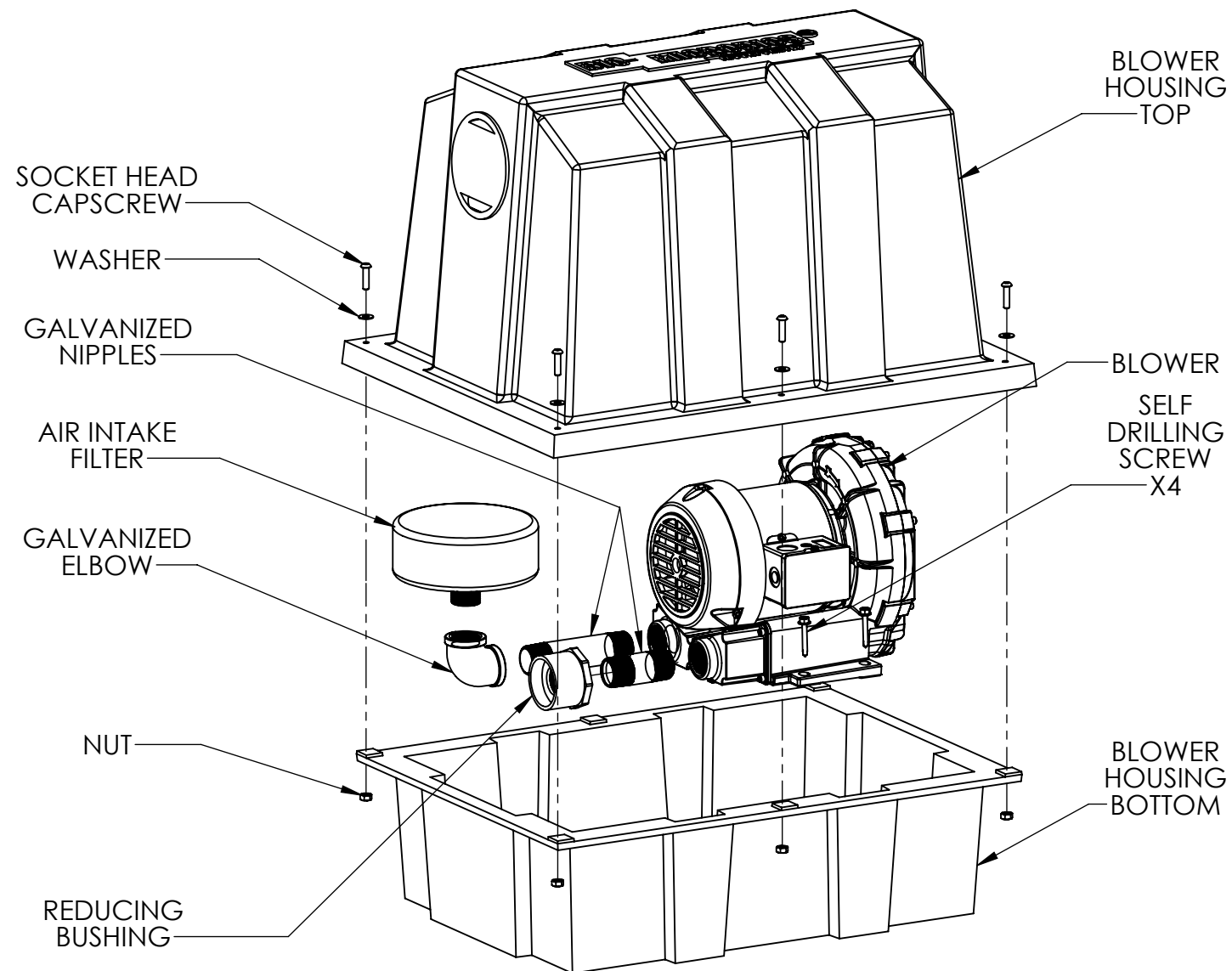
TREATMENT ZONE
1125 GALLON MIN (4259 L MIN)



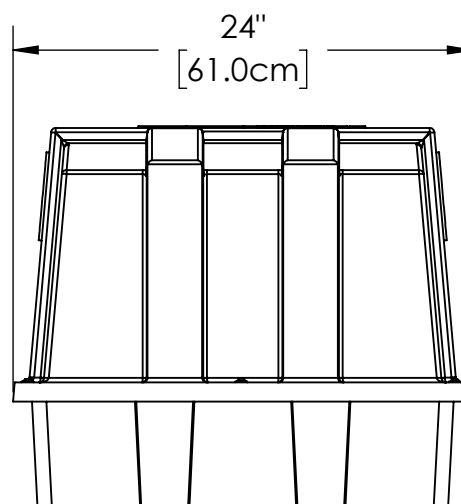
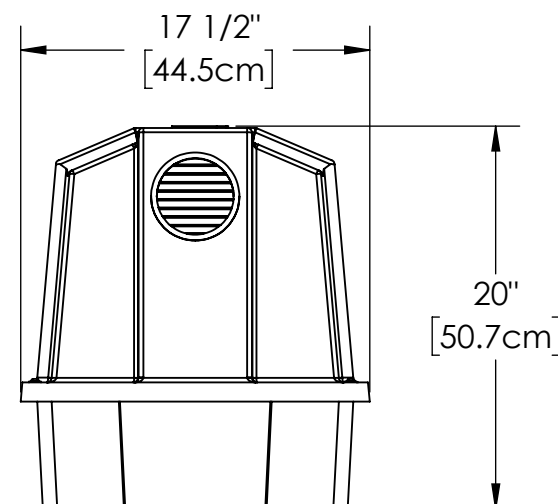
NOTES:

1. **MINIMUM DIMENSIONS DO NOT DETERMINE OVERALL TANK CAPACITY.**
2. INSPECTION/PUMPOUT PORT LOCATIONS MAY VARY DEPENDING ON TANK CONSTRUCTION.
3. ALL APPURTENANCES TO FAST® (E.G. TANKS, ACCESS PORTS, ELECTRICAL, ETC.) MUST CONFORM TO ALL APPLICABLE COUNTY, STATE, PROVINCE, AND LOCAL PLUMBING AND ELECTRICAL CODES.
4. PUMP OUT ACCESS SHALL BE ADEQUATE TO THOROUGHLY CLEAN OUT BOTH ZONES.
5. IF LESS THAN THE SPECIFIED MINIMUMS ARE CONSIDERED NECESSARY, CONSULT FACTORY FOR GUIDANCE.
6. SPECIALIZED TREATMENT NEEDS MAY REQUIRE SPECIFIC FEATURES TO BE INCORPORATED INTO THE DESIGN. CONSULT FACTORY FOR GUIDANCE.
7. MINIMUM OF 2.0in [5.1cm] INVERT IS NECESSARY BETWEEN THE INLET AND OUTLET OF EACH ZONE FOR GRAVITY FLOW SYSTEMS.
8. TANK VOLUMES MAY VARY BY APPLICATION AND JURISDICTION.
9. TANKS OF VARYING SHAPE AND MATERIAL CAN BE USED WITHIN SPECIFIED MINIMUMS.
10. TANK SET UP MAY BE DIFFERENT THAN SHOWN, I.E., SEPARATE SETTLING AND TREATMENT TANKS.

PROPRIETARY AND CONFIDENTIAL THE INFORMATION CONTAINED IN THIS DRAWING IS THE SOLE PROPERTY OF BIOMICROBICS, INC.. ANY REPRODUCTION IN PART OR AS A WHOLE WITHOUT THE WRITTEN PERMISSION OF BIOMICROBICS, INC. IS PROHIBITED. DO NOT SCALE DRAWING	UNLESS OTHERWISE SPECIFIED DIMENSIONS ARE IN INCHES AND TOLERANCES ARE AS FOLLOWS $X^{\circ} \pm 1^{\circ}$ $.X \pm .50$ $.XX \pm .25$	 BETTER WATER. BETTER WORLD.	
	DRAWN BY: ESG		
SHEET 5 OF 6	APPROVED BY: MSH	PART NUMBER 600-FINHSF1.5	
SCALE: 1:32	SIZE: B	APPROVED DATE: 3/14/2022	REV H



BLOWER PAD



NOTES:

1. SOME MICROFAST CONFIGURATIONS MAY REQUIRE DIFFERENT BLOWER HOUSINGS.
2. BLOWER MUST BE LOCATED ABOVE FLOOD LEVELS.

<p>PROPRIETARY AND CONFIDENTIAL</p> <p>THE INFORMATION CONTAINED IN THIS DRAWING IS THE SOLE PROPERTY OF BIOMICROBICS, INC.. ANY REPRODUCTION IN PART OR AS A WHOLE WITHOUT THE WRITTEN PERMISSION OF BIOMICROBICS, INC. IS PROHIBITED.</p> <p>DO NOT SCALE DRAWING</p>	<p>UNLESS OTHERWISE SPECIFIED DIMENSIONS ARE IN INCHES AND TOLERANCES ARE AS FOLLOWS</p> <p>X° ± 1° .X ± .50 .XX ± .25</p>	
	<p>DRAWN BY: ESG</p> <p>DATE: 3/14/2022</p>	
<p>SHEET 6 OF 6</p>	<p>APPROVED BY: MSH</p>	<p>PART NUMBER 600-FINHSF1.5</p>
<p>SCALE: N/A</p>	<p>SIZE: B</p>	<p>APPROVED DATE: 3/14/2022</p>
		<p>REV H</p>