
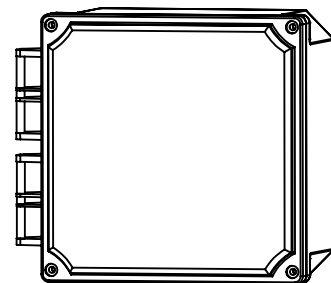
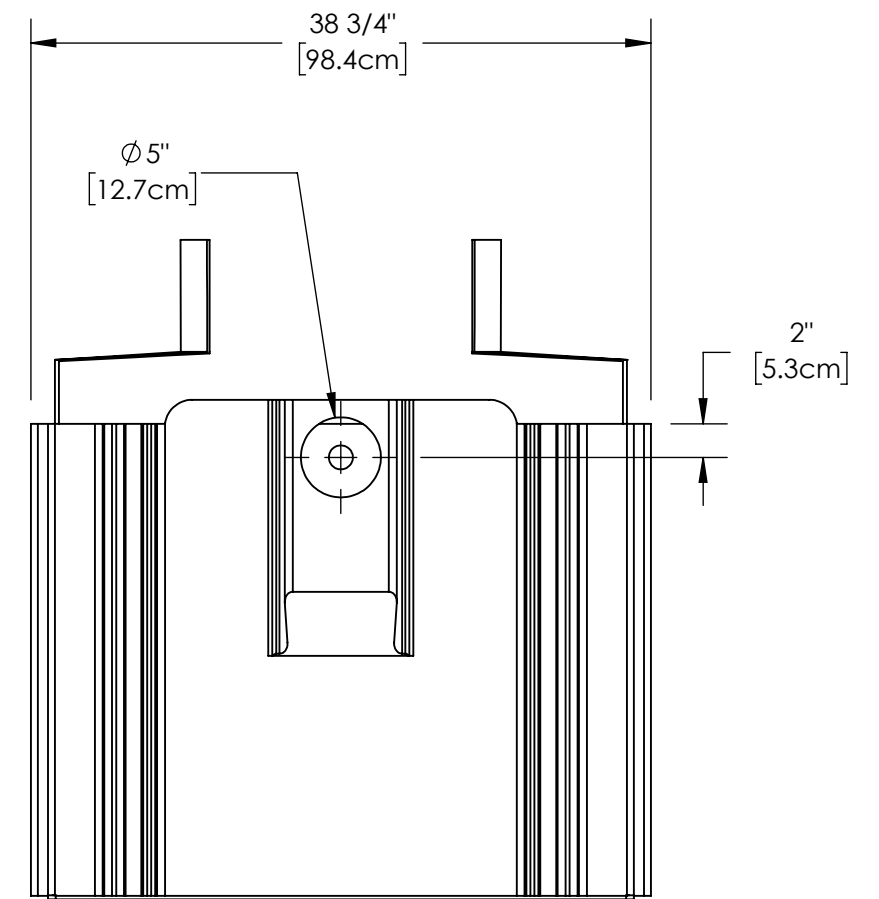
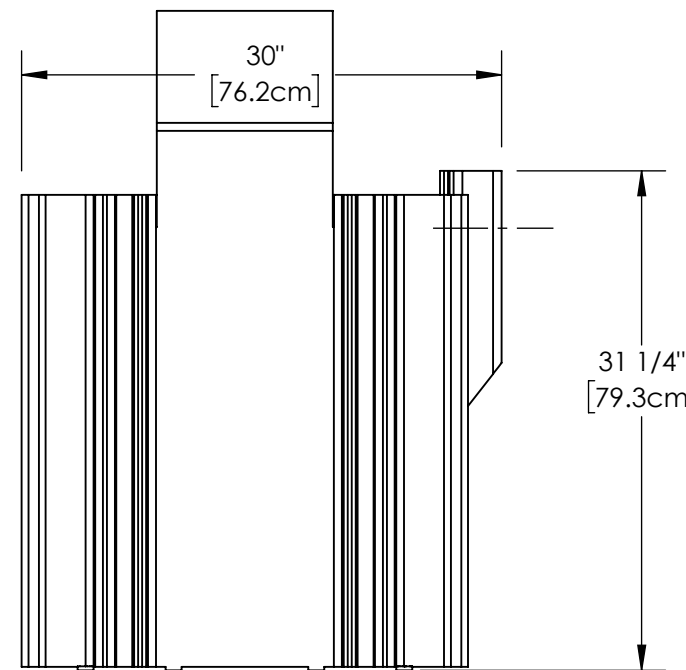
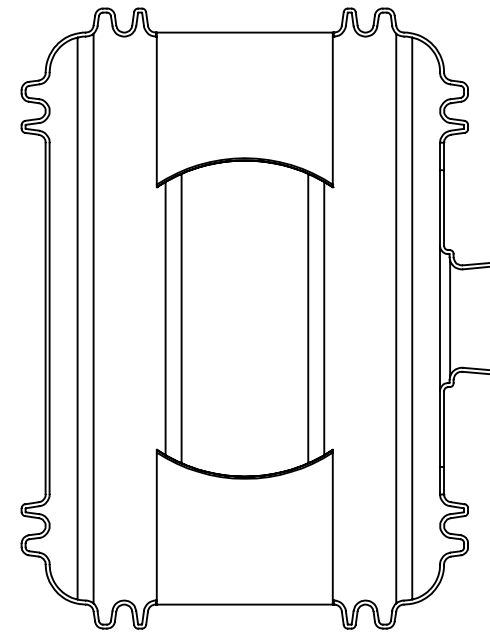
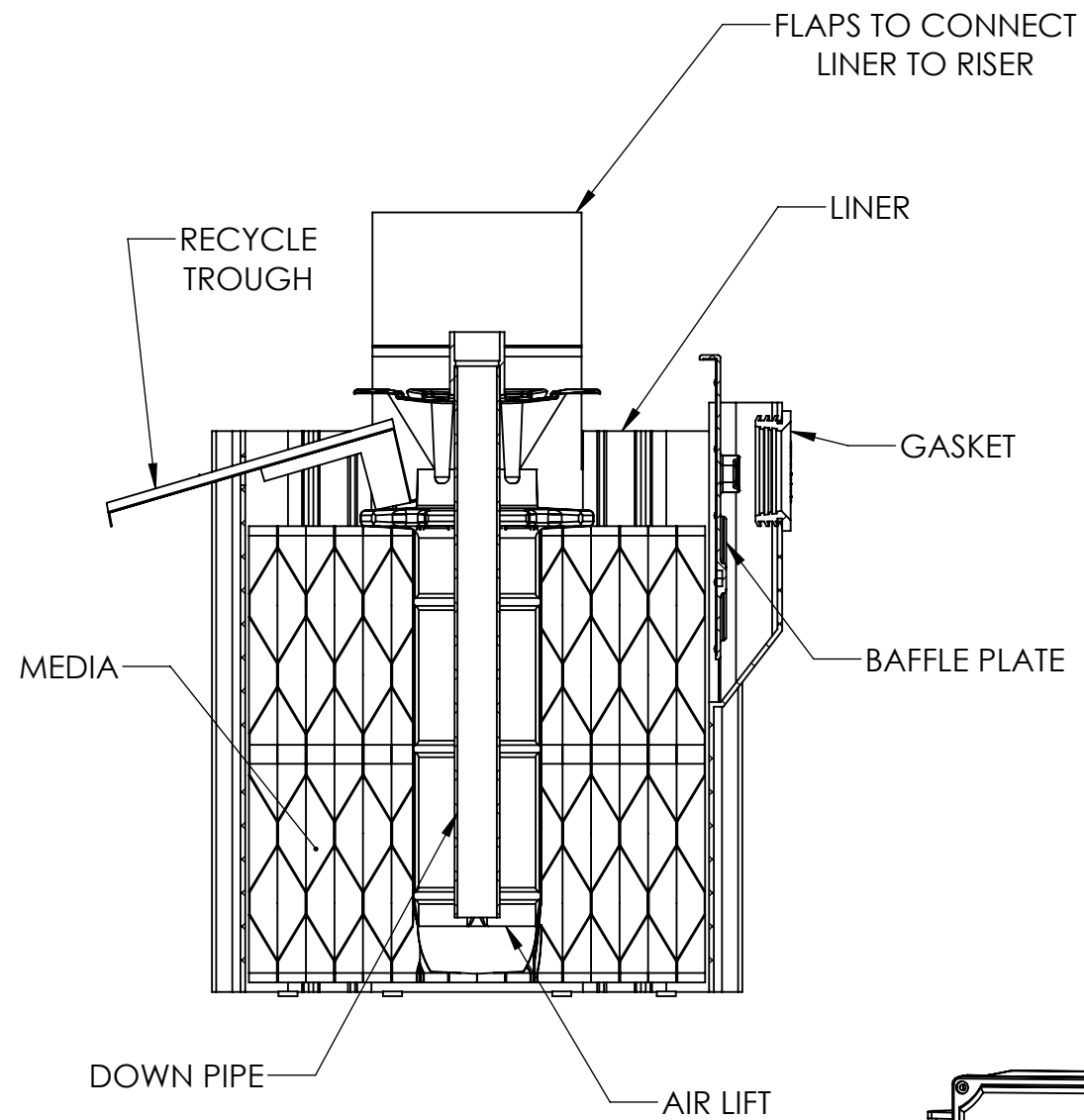


REVISIONS				
ZONE	REV.	DESCRIPTION	DATE	APPROVED
	A	Liner Change	11/11/2024	MSH

MicroFAST® 0.4

<p>PROPRIETARY AND CONFIDENTIAL</p> <p>THE INFORMATION CONTAINED IN THIS DRAWING IS THE SOLE PROPERTY OF BIO-MICROBICS, INC.. ANY REPRODUCTION IN PART OR AS A WHOLE WITHOUT THE WRITTEN PERMISSION OF BIO-MICROBICS, INC. IS PROHIBITED.</p> <p>DO NOT SCALE DRAWING</p>	<p>UNLESS OTHERWISE SPECIFIED DIMENSIONS ARE IN INCHES AND TOLERANCES ARE AS FOLLOWS</p> <p>X° ± 1° .X ± .50 .XX ± .25</p>		
	<p>DRAWN BY: MSH</p>	<p>DESCRIPTION MicroFAST 0.4</p>	
	<p>DATE: 7/29/2024</p>	<p>PART NUMBER 600-FINMCF 0.4</p>	
<p>SHEET 1 OF 5</p>	<p>APPROVED BY: MSH</p>	<p>APPROVED DATE: 7/29/2024</p>	<p>REV A</p>
<p>SCALE: 1:8</p>	<p>SIZE: B</p>		

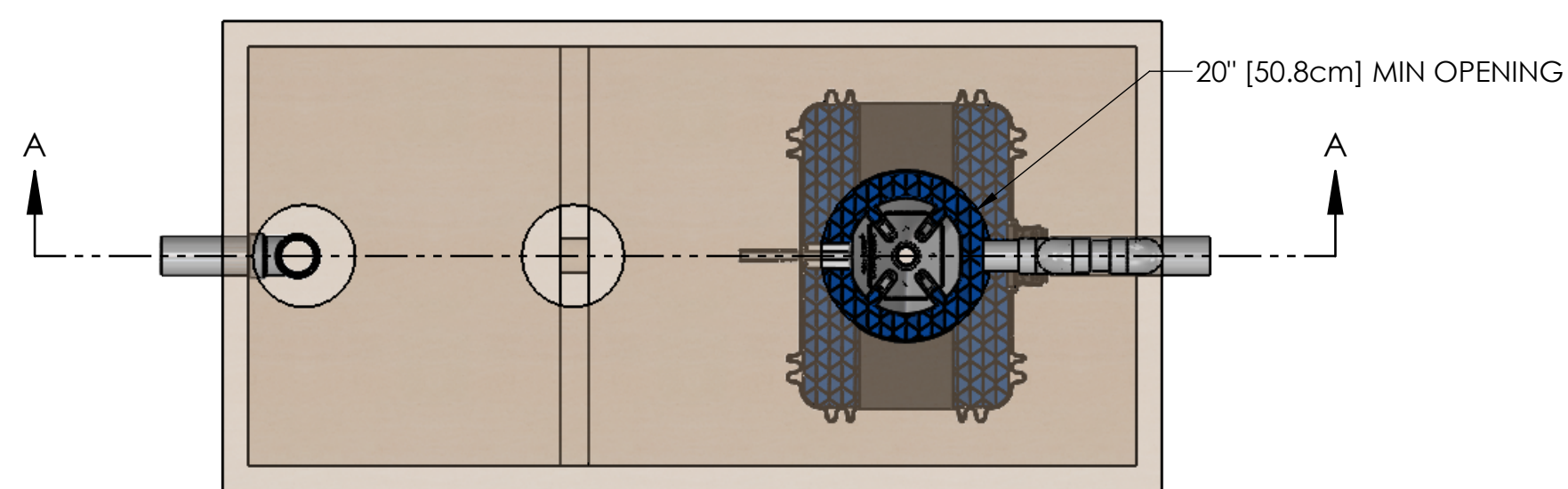
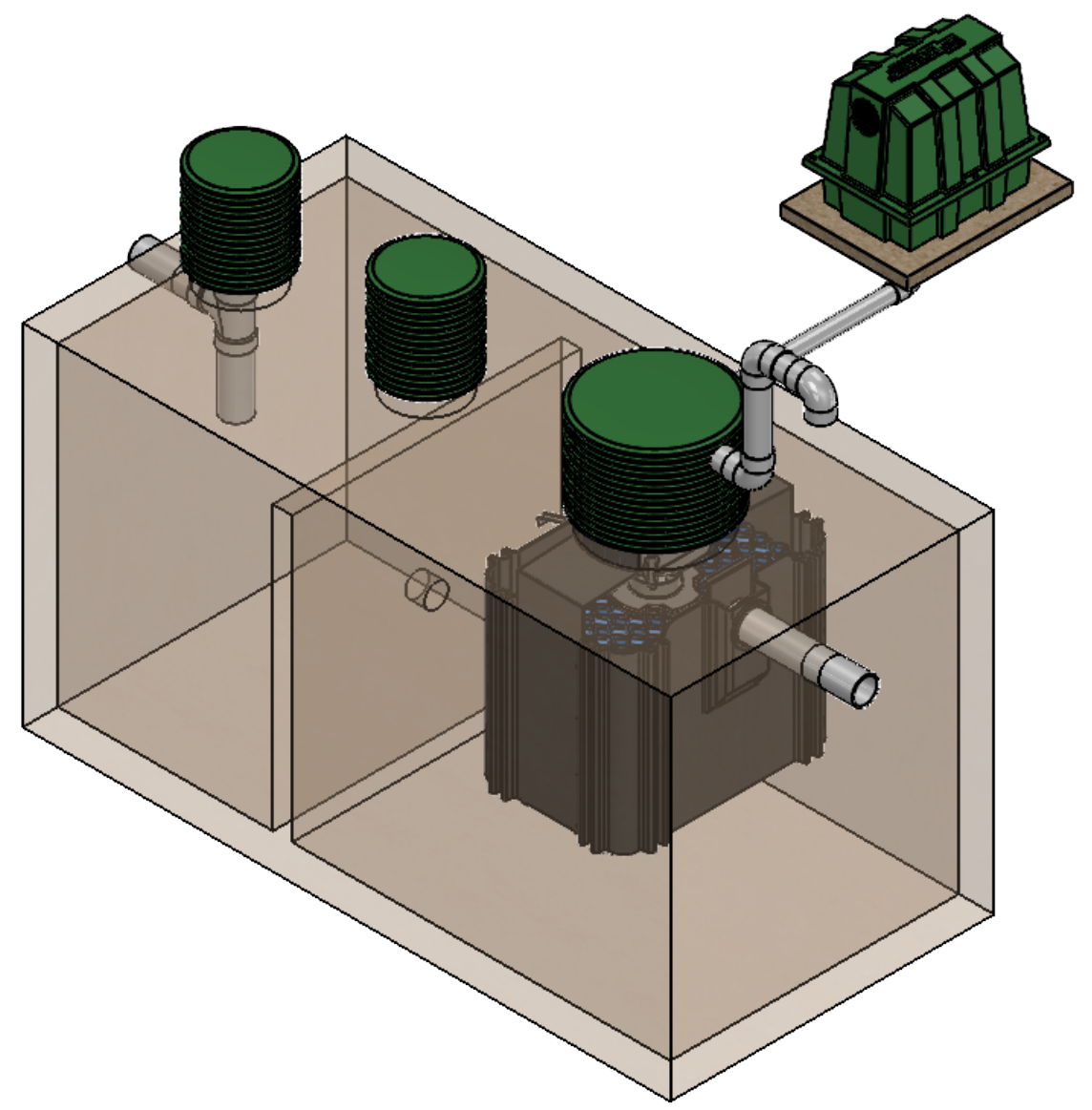
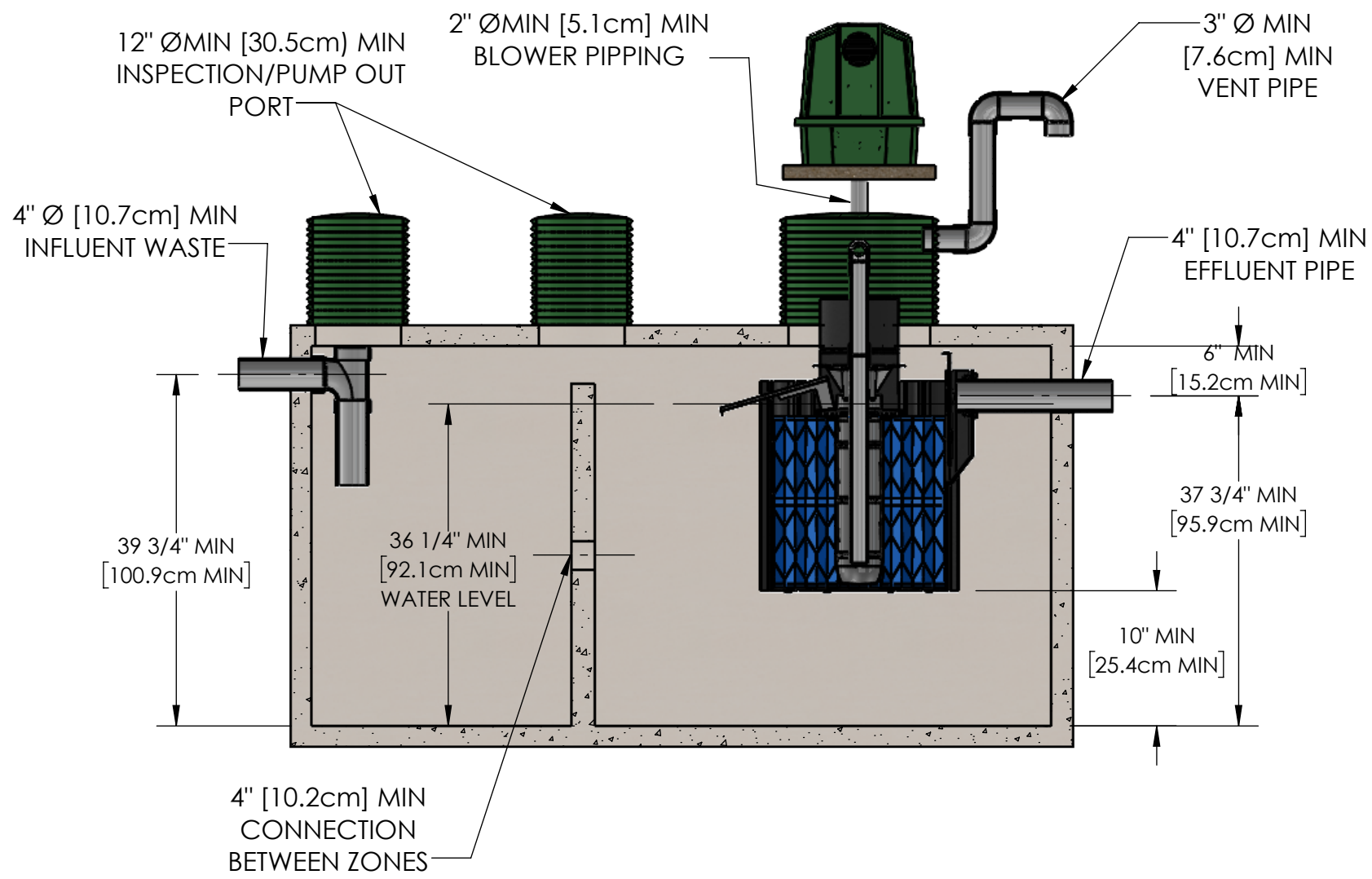


CONTROL
PANEL

NOTES:

1. ITEMS ARE DEPICTIONS AND MAY VARY IN APPEARANCE.

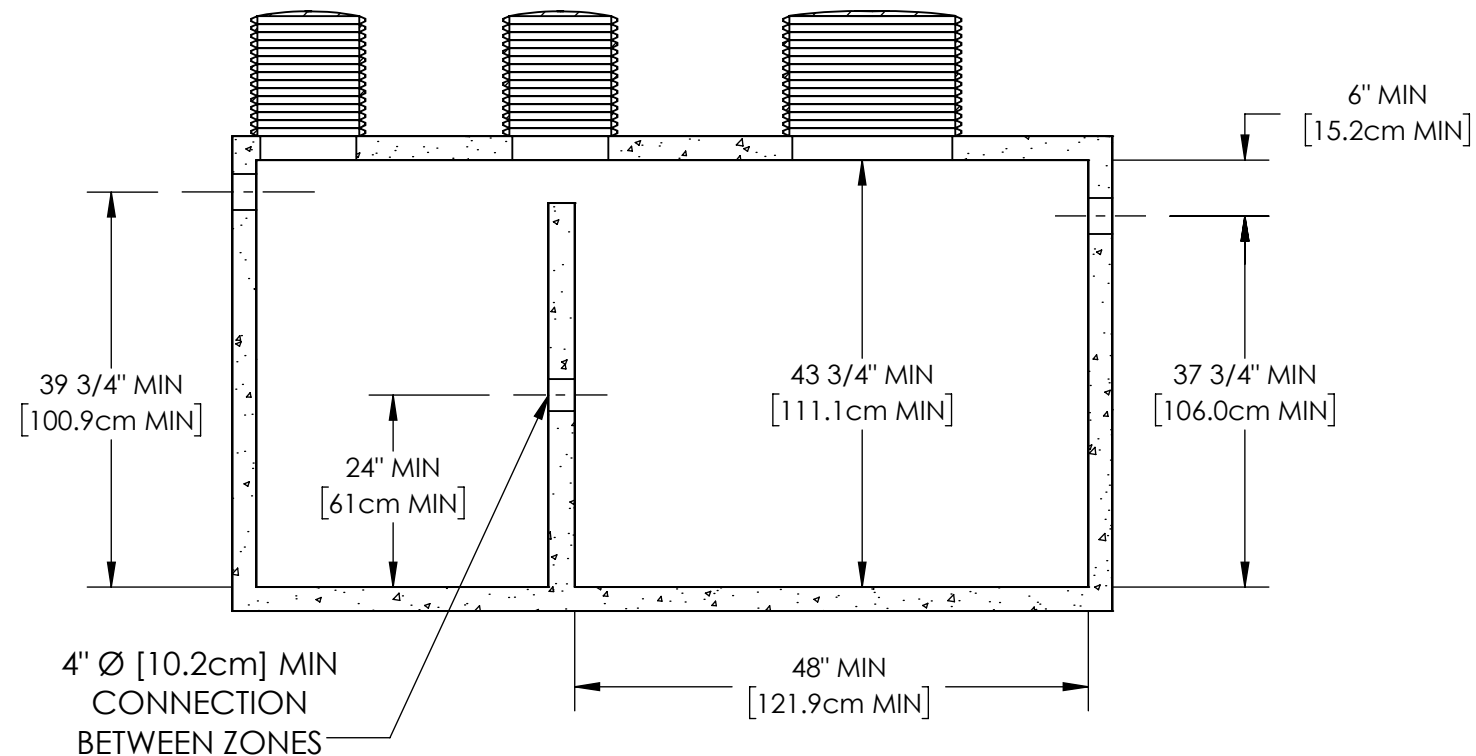
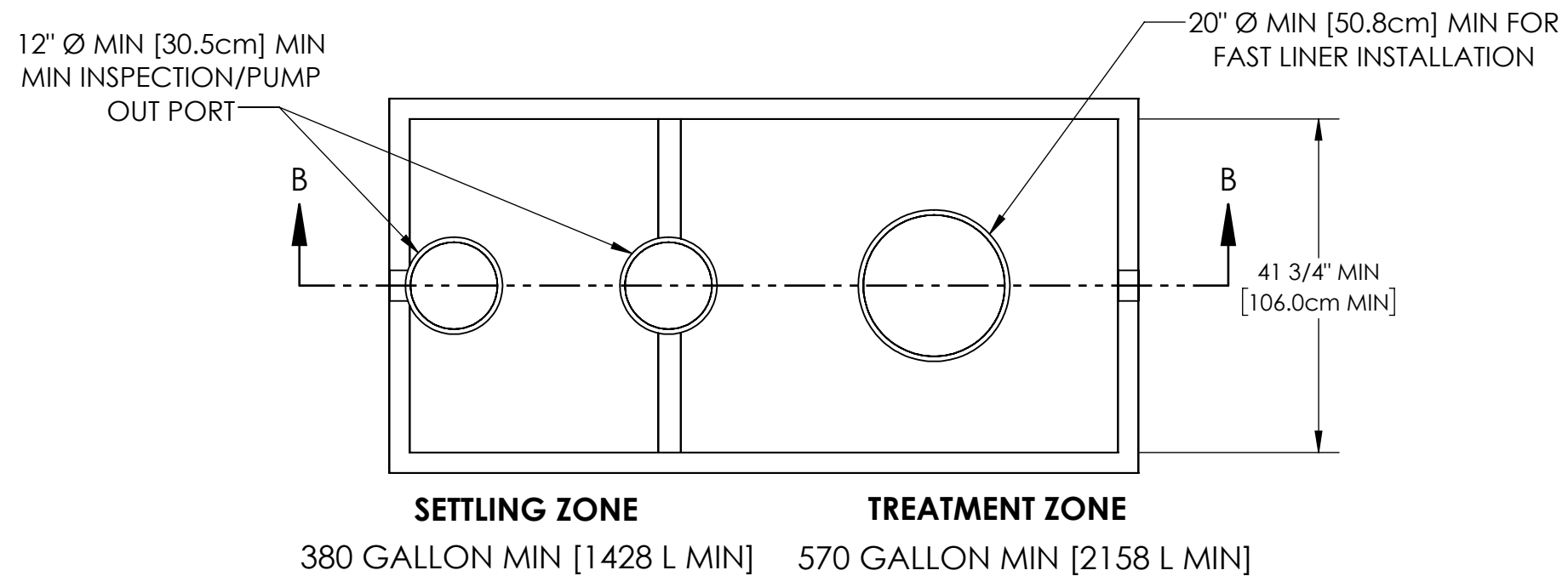
<p>PROPRIETARY AND CONFIDENTIAL THE INFORMATION CONTAINED IN THIS DRAWING IS THE SOLE PROPERTY OF BIO-MICROBICS, INC.. ANY REPRODUCTION IN PART OR AS A WHOLE WITHOUT THE WRITTEN PERMISSION OF BIO-MICROBICS, INC. IS PROHIBITED.</p>		<p>UNLESS OTHERWISE SPECIFIED DIMENSIONS ARE IN INCHES AND TOLERANCES ARE AS FOLLOWS X° ± 1° .X ± .50 .XX ± .25</p>			
<p>DO NOT SCALE DRAWING</p>		<p>DRAWN BY: MSH DATE: 7/29/2024</p>			
<p>SHEET 2 OF 5</p>		<p>APPROVED BY: MSH APPROVED BY DATE: 7/29/2024</p>		<p>PART NUMBER 600-FINMCF 0.4</p>	
<p>SCALE: 1:8</p>	<p>SIZE: B</p>			<p>REV A</p>	



NOTES:


1. AIRLINE PIPING TO FAST® MAY NOT EXCEED 100 FT (30M) TOTAL LENGTH AND HAVE A MAXIMUM OF 4 ELBOWS IN THE PIPING SYSTEM. FOR DISTANCES GREATER THAN 100 FT (30M) CONSULT FACTORY.
2. IF LESS THAN THE SPECIFIED MINIMUMS ARE CONSIDERED NECESSARY, CONSULT FACTORY FOR GUIDANCE.
3. SPECIALIZED TREATMENT LEVELS MAY REQUIRE SPECIFIC FEATURES TO BE INCORPORATED INTO THE DESIGN. CONSULT FACTORY FOR GUIDANCE.
4. SOME ITEMS REMOVED FOR CLARITY.

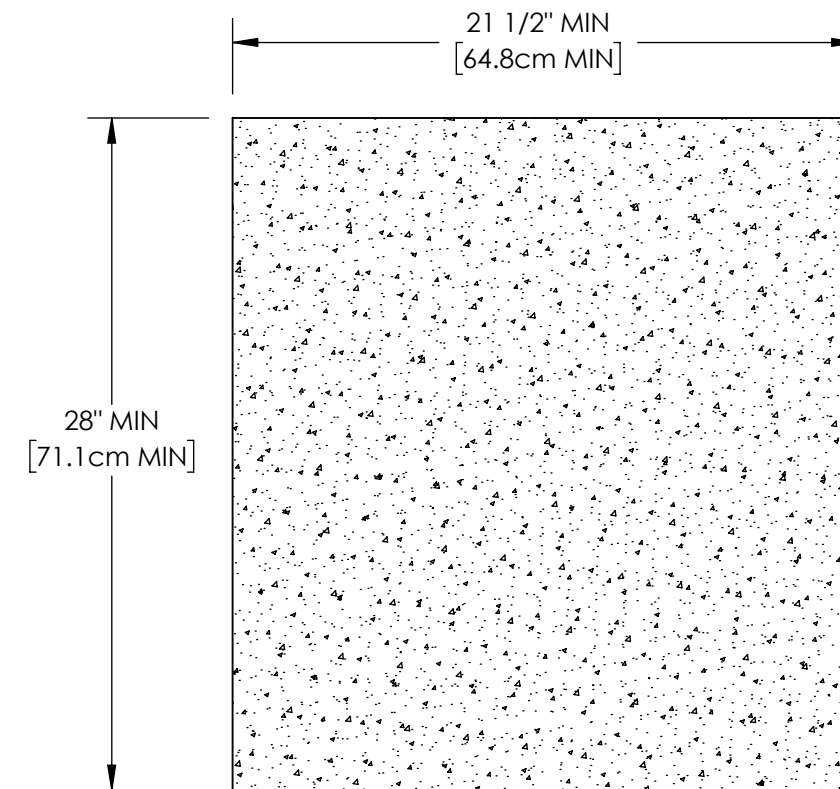
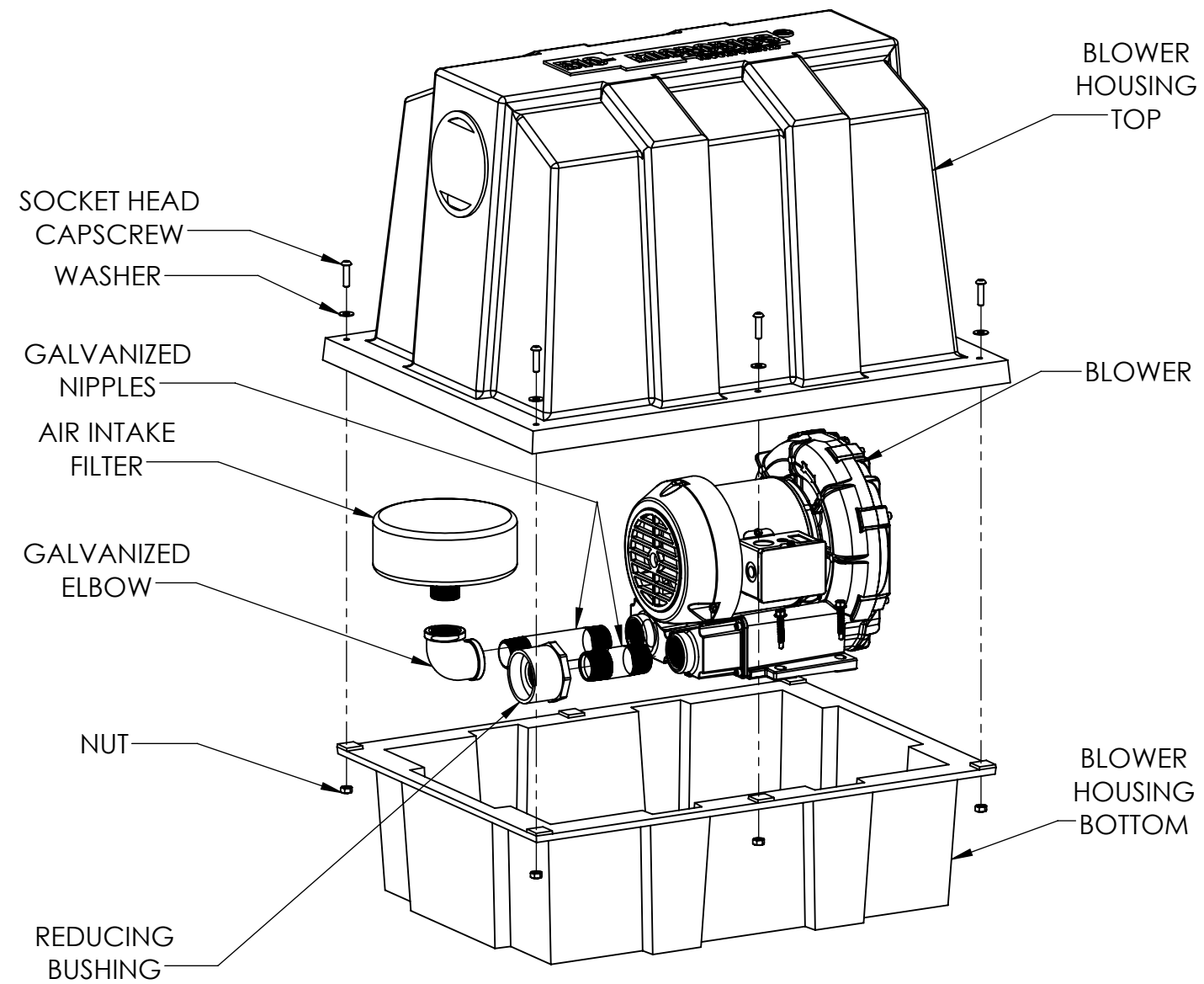
<p>PROPRIETARY AND CONFIDENTIAL THE INFORMATION CONTAINED IN THIS DRAWING IS THE SOLE PROPERTY OF BIO-MICROBICS, INC.. ANY REPRODUCTION IN PART OR AS A WHOLE WITHOUT THE WRITTEN PERMISSION OF BIO-MICROBICS, INC. IS PROHIBITED.</p>		<p>UNLESS OTHERWISE SPECIFIED DIMENSIONS ARE IN INCHES AND TOLERANCES ARE AS FOLLOWS X° ± 1° .X ± .50 .XX ± .25</p>			
<p>DO NOT SCALE DRAWING</p>		<p>DRAWN BY: MSH</p>		<p>DESCRIPTION MicroFAST 0.4 DETAILS</p>	
<p>SHEET 3 OF 5</p>		<p>DATE: 7/29/2024</p>		<p>PART NUMBER</p>	
<p>SCALE: 1:20</p>		<p>APPROVED BY: MSH</p>		<p>600-FINMCF 0.4</p>	
<p>SIZE: B</p>		<p>APPROVED BY DATE: 7/29/2024</p>		<p>REV A</p>	



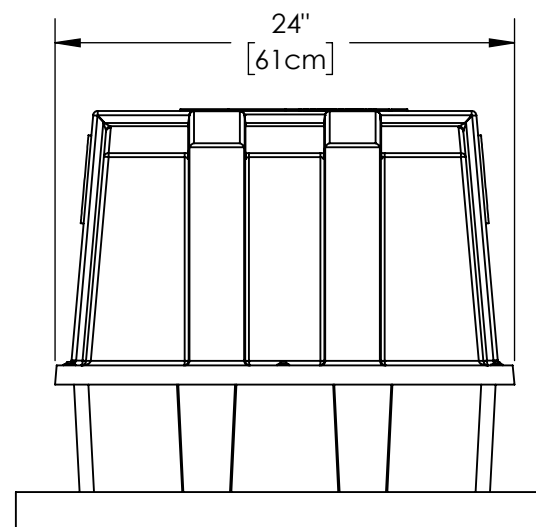
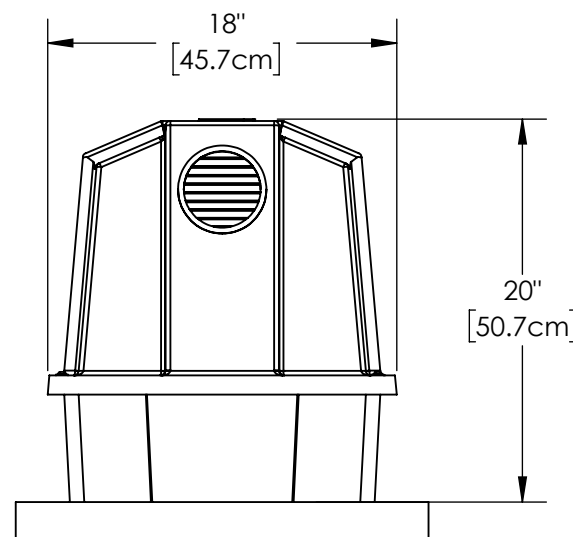
NOTES:

1. **MINIMUM DIMENSIONS DO NOT DETERMINE OVERALL TANK CAPACITY.**
2. INSPECTION/PUMPOUT PORT LOCATIONS MAY VARY DEPENDING ON TANK CONSTRUCTION.
3. ALL APPURTENANCES TO FAST® (E.G. TANKS, ACCESS PORTS, ELECTRICAL, ETC.) MUST CONFORM TO ALL APPLICABLE COUNTY, STATE, PROVINCE, AND LOCAL PLUMBING AND ELECTRICAL CODES.
4. PUMP OUT ACCESS SHALL BE ADEQUATE TO THOROUGHLY CLEAN OUT BOTH ZONES.
5. IF LESS THAN THE SPECIFIED MINIMUMS ARE CONSIDERED NECESSARY, CONSULT FACTORY FOR GUIDANCE.
6. SPECIALIZED TREATMENT NEEDS MAY REQUIRE SPECIFIC FEATURES TO BE INCORPORATED INTO THE DESIGN. CONSULT FACTORY FOR GUIDANCE.
7. MINIMUM OF 2.0in [5.1cm] INVERT IS NECESSARY BETWEEN THE INLET AND OUTLET OF EACH ZONE FOR GRAVITY FLOW SYSTEMS.
8. TANK VOLUMES MAY VARY BY APPLICATION AND JURISDICTION.
9. TANKS OF VARYING SHAPE AND MATERIAL CAN BE USED WITHIN SPECIFIED MINIMUMS.
10. TANK SET UP MAY BE DIFFERENT THAN SHOWN, i.e., SEPARATE SETTLING AND TREATMENT TANKS.

PROPRIETARY AND CONFIDENTIAL THE INFORMATION CONTAINED IN THIS DRAWING IS THE SOLE PROPERTY OF BIO-MICROBICS, INC.. ANY REPRODUCTION IN PART OR AS A WHOLE WITHOUT THE WRITTEN PERMISSION OF BIO-MICROBICS, INC. IS PROHIBITED. DO NOT SCALE DRAWING	UNLESS OTHERWISE SPECIFIED DIMENSIONS ARE IN INCHES AND TOLERANCES ARE AS FOLLOWS X° ± 1° .X ± .50 .XX ± .25	 BETTER WATER. BETTER WORLD.		
	DRAWN BY: MSH			DATE: 7/29/2024
SHEET 4 OF 5		APPROVED BY: MSH	PART NUMBER 600-FINMCF 0.4	
SCALE: 1:8	SIZE: B	APPROVED BY DATE: 7/29/2024	REV A	



BLOWER PAD



NOTES:

1. SOME MICROFAST CONFIGURATIONS MAY REQUIRE DIFFERENT BLOWER HOUSINGS.
2. BLOWER MUST BE LOCATED ABOVE FLOOD LEVELS.

<p>PROPRIETARY AND CONFIDENTIAL</p> <p>THE INFORMATION CONTAINED IN THIS DRAWING IS THE SOLE PROPERTY OF BIOMICROBICS, INC.. ANY REPRODUCTION IN PART OR AS A WHOLE WITHOUT THE WRITTEN PERMISSION OF BIOMICROBICS, INC. IS PROHIBITED.</p> <p>DO NOT SCALE DRAWING</p>	<p>UNLESS OTHERWISE SPECIFIED DIMENSIONS ARE IN INCHES AND TOLERANCES ARE AS FOLLOWS</p> <p>X° ±1° .X ± .50 .XX ± .25</p>	
	<p>DRAWN BY: ESG</p> <p>DATE: 6/24/2022</p>	
<p>SHEET 5 OF 5</p>	<p>APPROVED BY: MSH</p>	<p>PART NUMBER 600-FINMCF 0.4</p>
<p>SCALE: N/A</p>	<p>SIZE: B</p>	<p>APPROVED DATE: 6/24/2022</p>
		<p>REV A</p>