
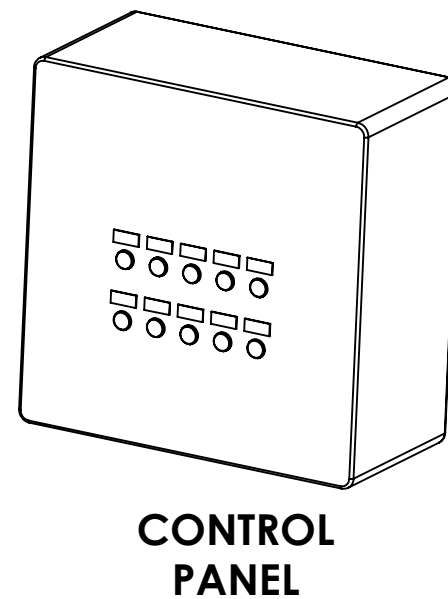
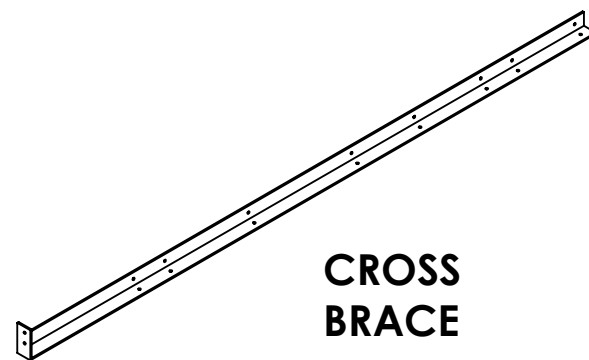
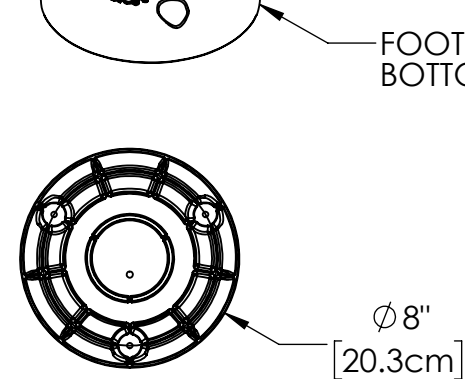
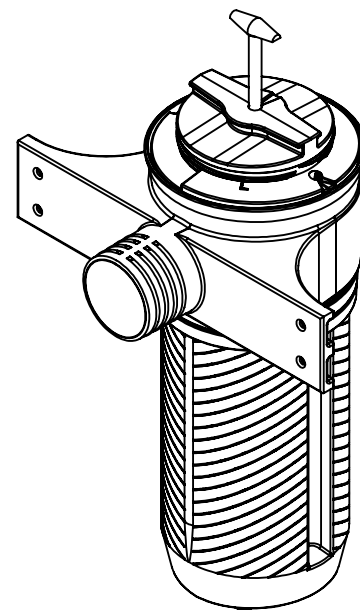
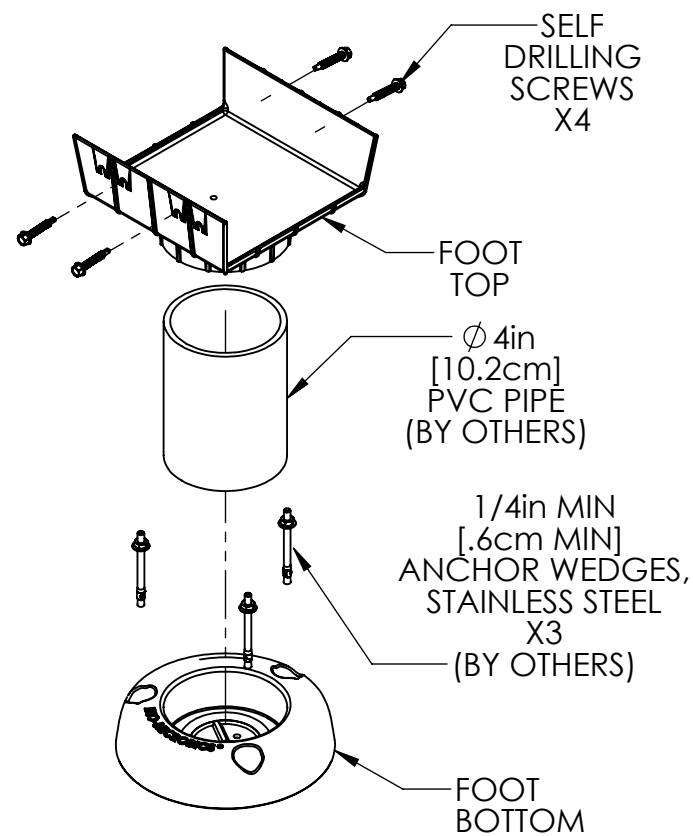
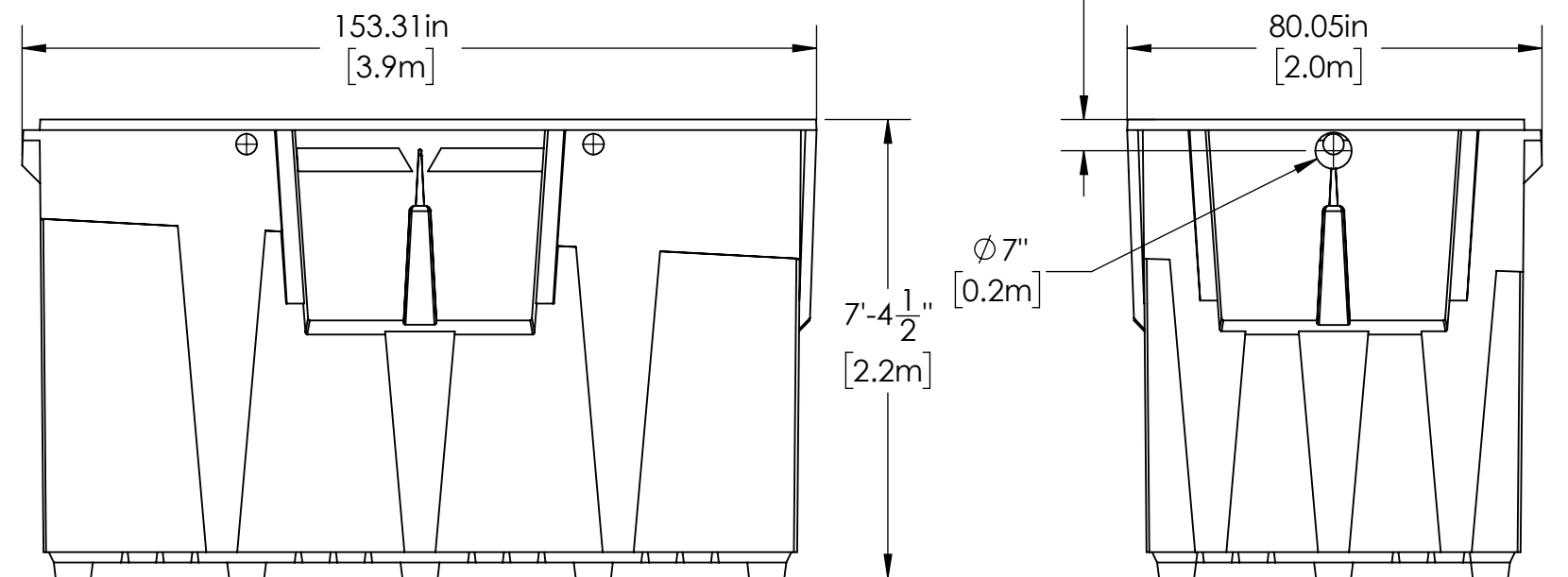
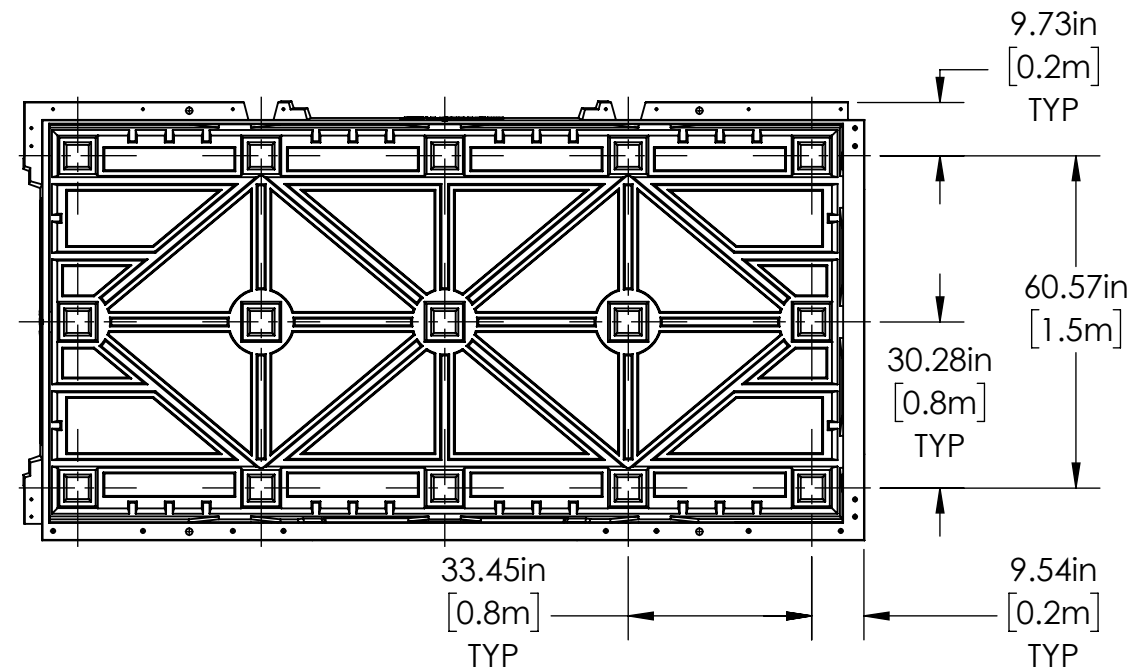
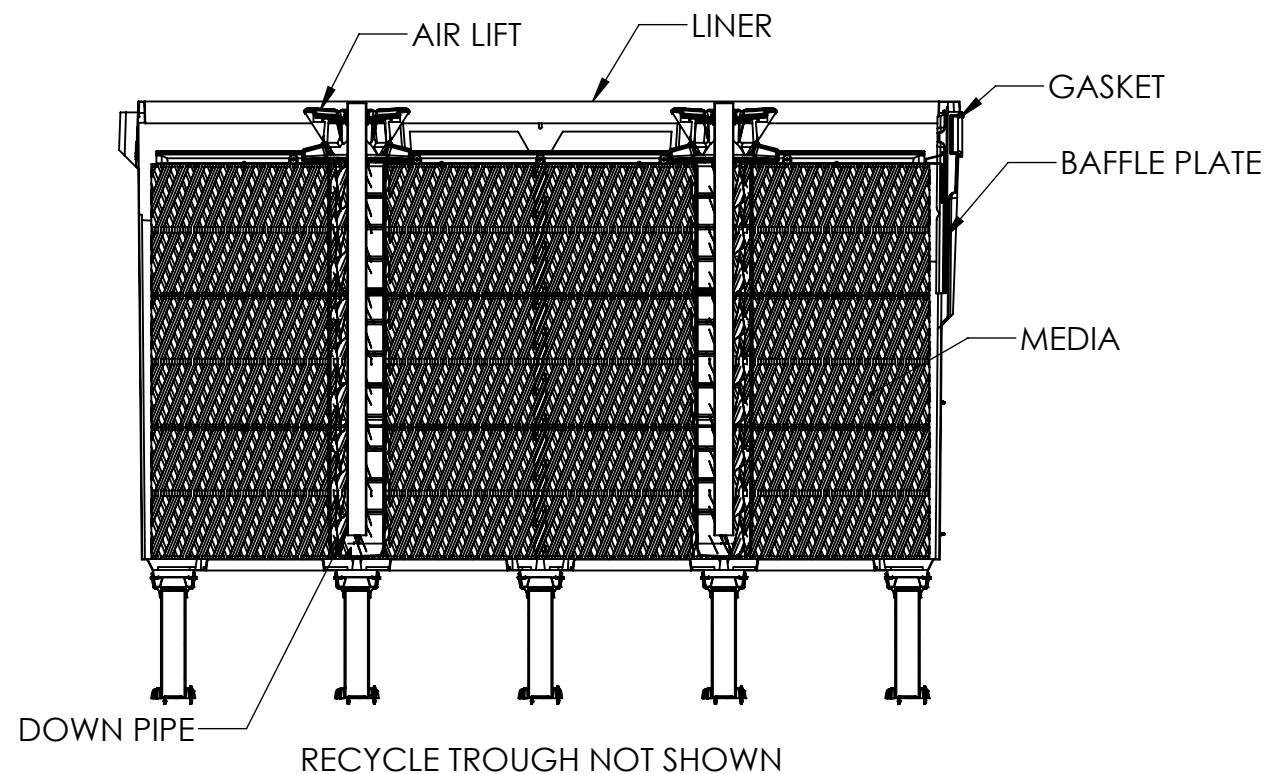


## MyFAST® 2.0

<p><b>PROPRIETARY AND CONFIDENTIAL</b> THE INFORMATION CONTAINED IN THIS DRAWING IS THE SOLE PROPERTY OF BIO-MICROBICS, INC.. ANY REPRODUCTION IN PART OR AS A WHOLE WITHOUT THE WRITTEN PERMISSION OF BIO-MICROBICS, INC. IS PROHIBITED.</p> <p>DO NOT SCALE DRAWING</p>		<p>UNLESS OTHERWISE SPECIFIED DIMENSIONS ARE IN INCHES AND TOLERANCES ARE AS FOLLOWS</p> <p>X° ±1° .X ± .50 .XX ± .25</p>			
		<p>DRAWN BY: ESG</p> <p>DATE: 11/10/2023</p>			
<p>SHEET 1 OF 7</p>		<p>APPROVED BY: MSH</p>		<p>PART NUMBER</p>	
<p>SCALE: 1:80</p>	<p>SIZE: B</p>	<p>APPROVED BY DATE: 11/10/2023</p>		<p>MYFAST 2.0</p>	<p>REV -</p>



**NOTES:**

1. ITEMS ARE DEPICTIONS AND MAY VARY IN APPEARANCE.

<p><b>PROPRIETARY AND CONFIDENTIAL</b></p> <p>THE INFORMATION CONTAINED IN THIS DRAWING IS THE SOLE PROPERTY OF BIOMICROBICS, INC.. ANY REPRODUCTION IN PART OR AS A WHOLE WITHOUT THE WRITTEN PERMISSION OF BIOMICROBICS, INC. IS PROHIBITED.</p> <p><b>DO NOT SCALE DRAWING</b></p>	<p>UNLESS OTHERWISE SPECIFIED DIMENSIONS ARE IN INCHES AND TOLERANCES ARE AS FOLLOWS</p> <p>X° ± 1°</p> <p>.X ± .50</p> <p>.XX ± .25</p>	<p>BETTER WATER. BETTER WORLD.</p>
	<p>DRAWN BY: ESG</p> <p>DATE: 11/10/2023</p>	
<p>SHEET 2 OF 7</p>	<p>APPROVED BY: MSH</p> <p>APPROVED DATE: 11/10/2023</p>	<p>PART NUMBER: MYFAST 2.0</p> <p>REV: </p>
<p>SCALE: 1:32</p>	<p>SIZE: B</p>	

# MyFAST® 2.0 with Optional MyTEE® Screen, AMS & BMS

## Product Description & Layout

### MyFAST® 2.0 BASIC

Designed to treat approximately 20,000 GPD (76 m<sup>3</sup>/day) of residential waste water. For non-residential or mixed use applications, consult factory for guidance.

- (2) MyFAST® Liners
- (2) SaniTEE® 1618 Screens
- Blower & Blower housing
- Control Panel
- Air Distribution Assembly
- Biosolids Collection Grid
- Biosolids Collection Pump valves and manifold
- (4) Lateral Braces

### OPTIONS

#### Aeration Management System (AMS)

LIXOR® aeration system provides oxygen and mixing, reducing primary sludge.

1. LIXOR® 3.0
2. Blower & Blower housing

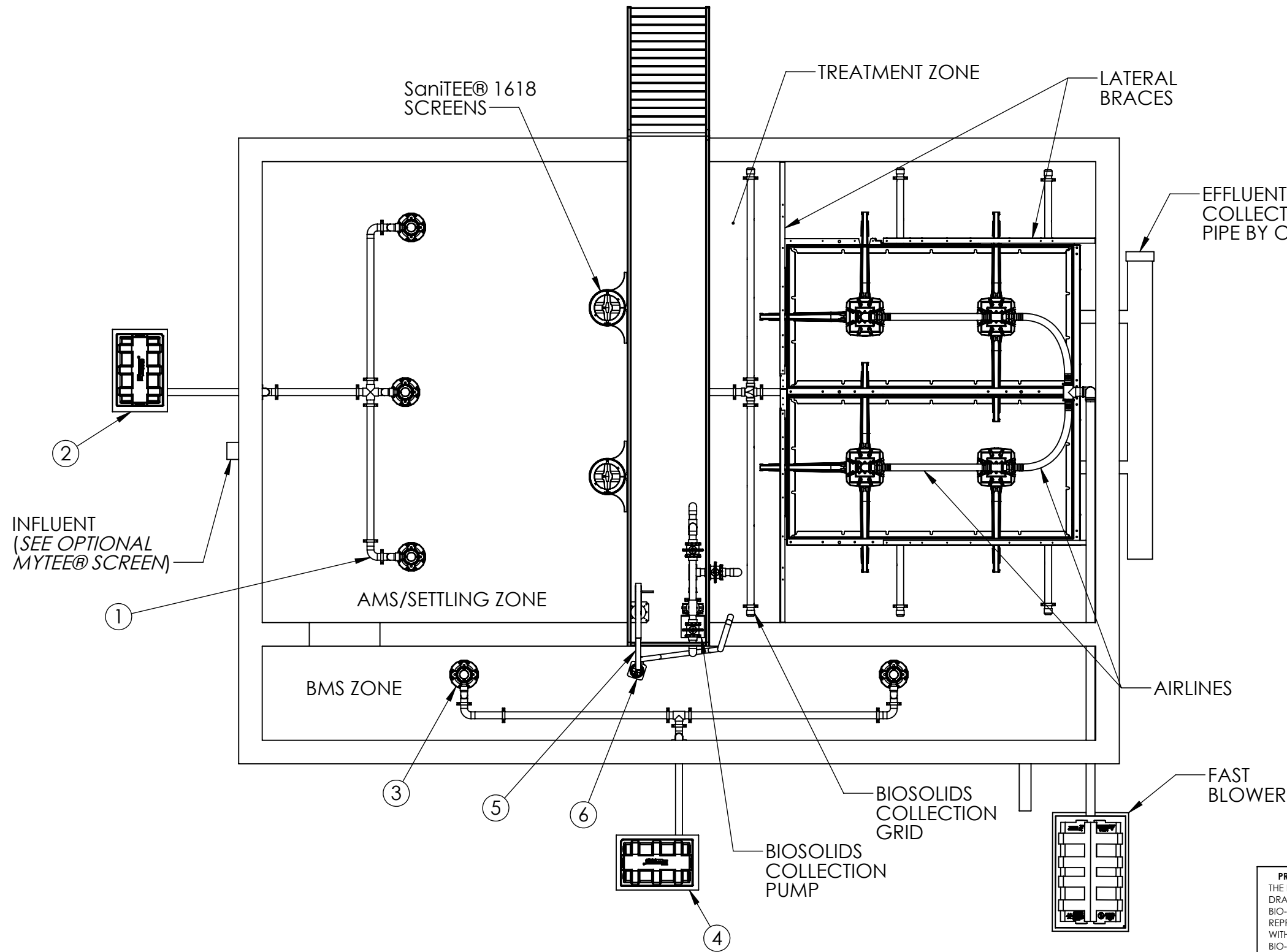
#### Biosolids Management System (BMS)

LIXOR® aeration system to reduce biosolids quantity.

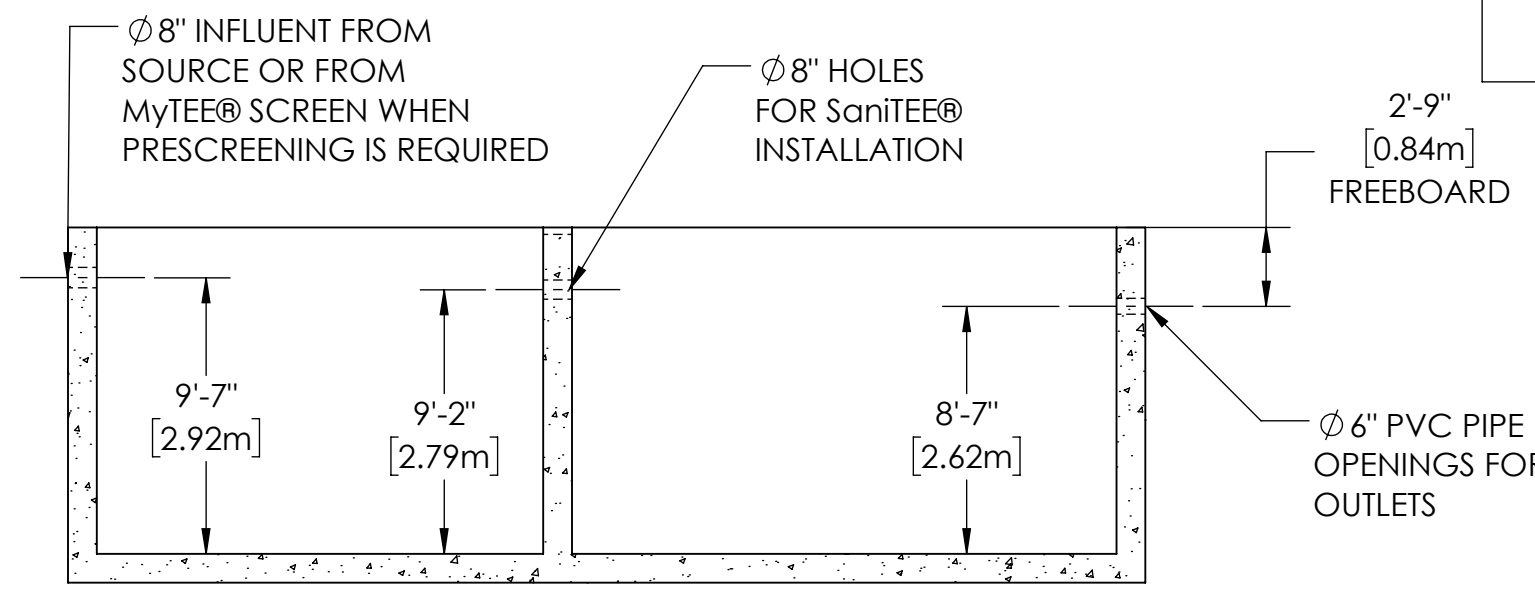
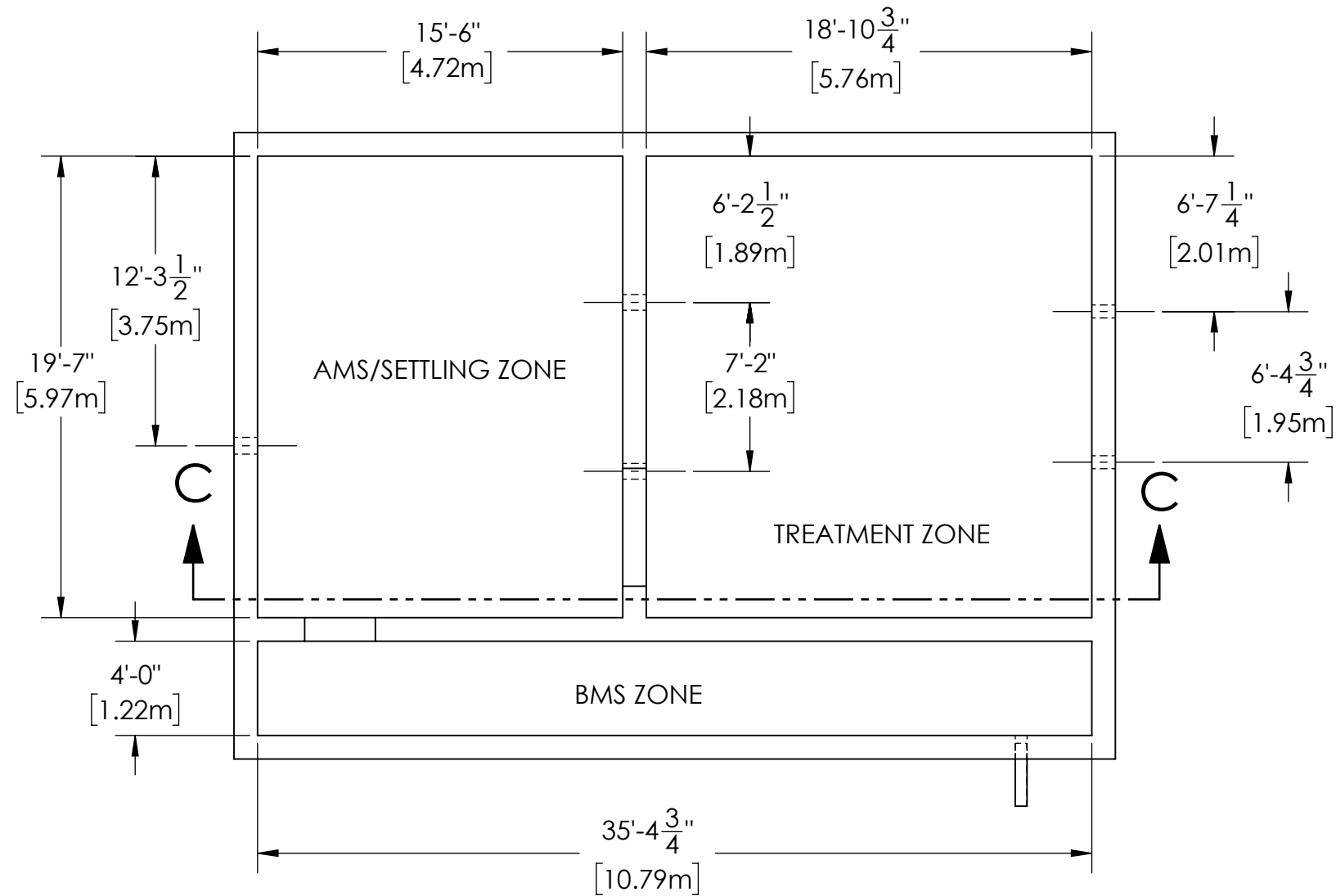
3. LIXOR® 2.0
4. Blower & Blower housing
5. Jib Crane
6. Decant Pump

#### MyTEE® Screen

A prescreening device is required prior to AMS Zone. MyTEE® screen provides separation of non-biological solids and grit.  
**See sheet 5 of 7 MyTEE® Screen**



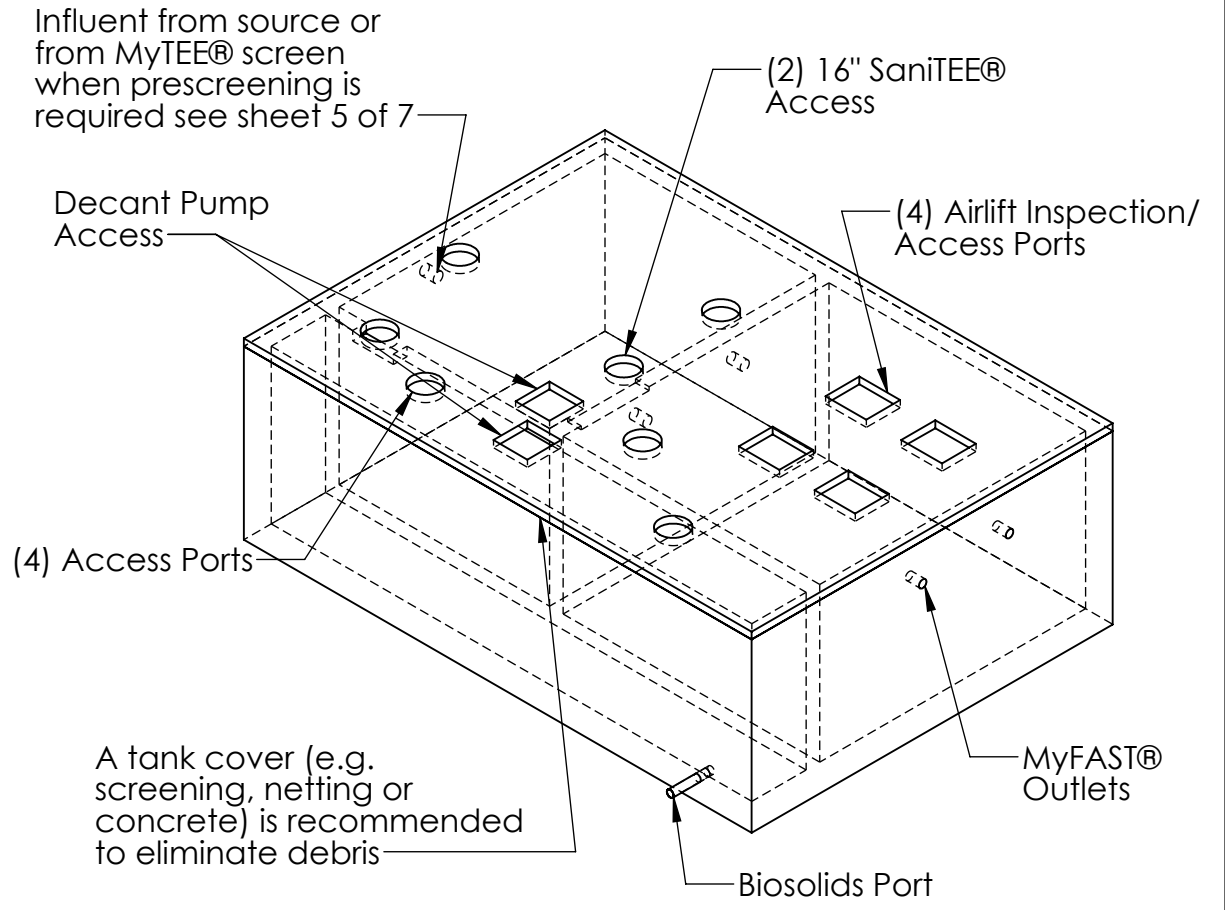
<b>PROPRIETARY AND CONFIDENTIAL</b> THE INFORMATION CONTAINED IN THIS DRAWING IS THE SOLE PROPERTY OF BIO-MICROBICS, INC.. ANY REPRODUCTION IN PART OR AS A WHOLE WITHOUT THE WRITTEN PERMISSION OF BIO-MICROBICS, INC. IS PROHIBITED.		UNLESS OTHERWISE SPECIFIED DIMENSIONS ARE IN INCHES AND TOLERANCES ARE AS FOLLOWS X° ± 1° .X ± .50 .XX ± .25		 BETTER WATER. BETTER WORLD.	
DO NOT SCALE DRAWING		DRAWN BY: ESG		DESCRIPTION <b>LAYOUT</b>	
		DATE: 11/10/2023			
<b>SHEET 3 OF 7</b>		APPROVED BY: MSH		PART NUMBER <b>MYFAST 2.0</b>	
SCALE: 1:60	SIZE: B	APPROVED BY DATE: 11/10/2023			




SECTION C-C

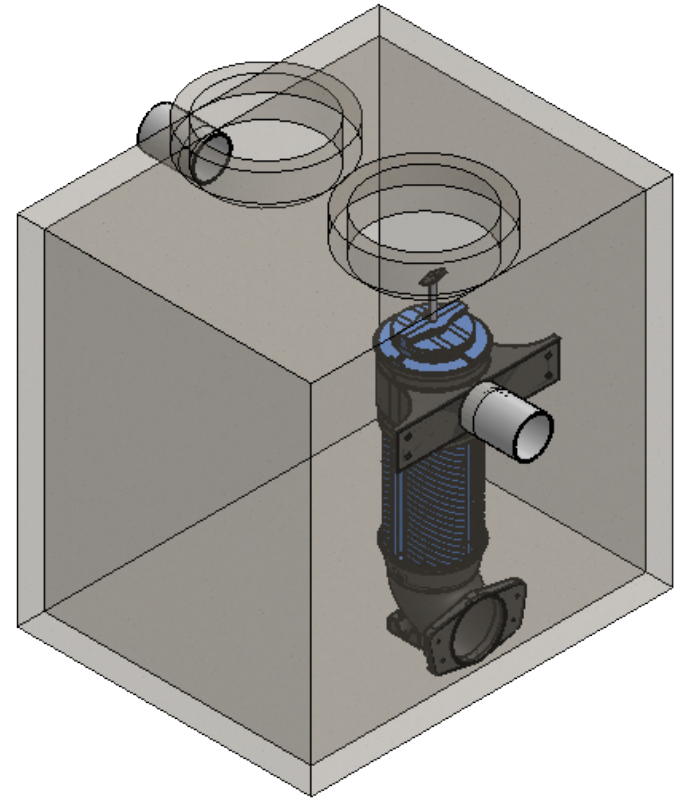
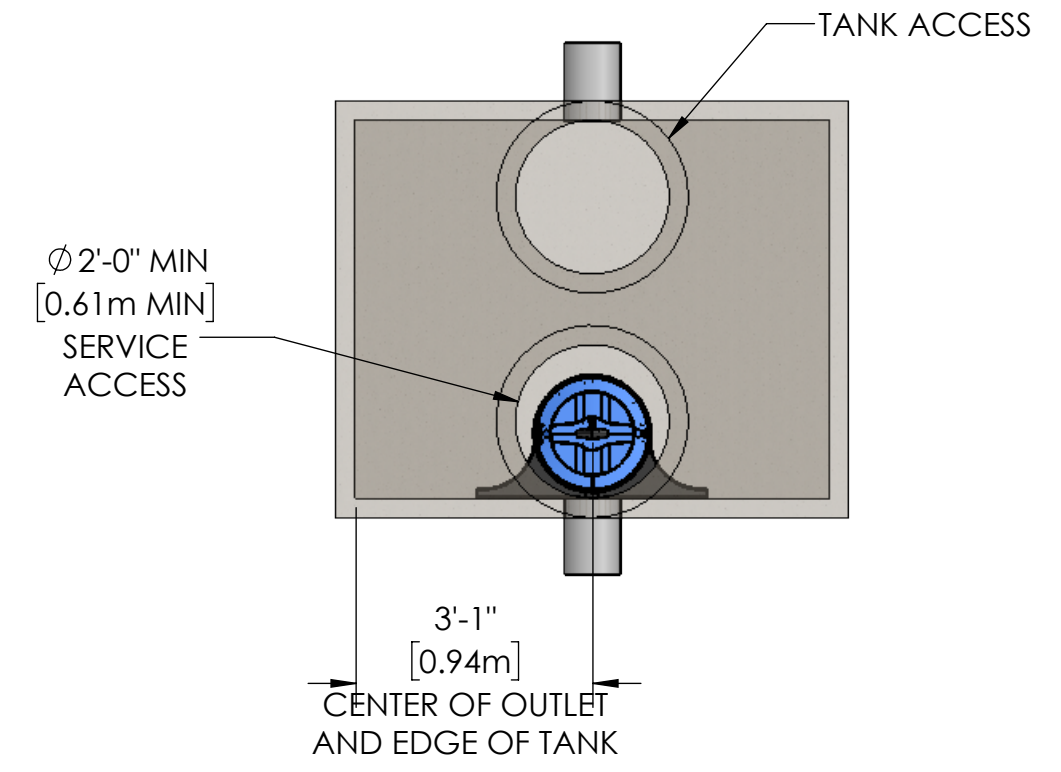
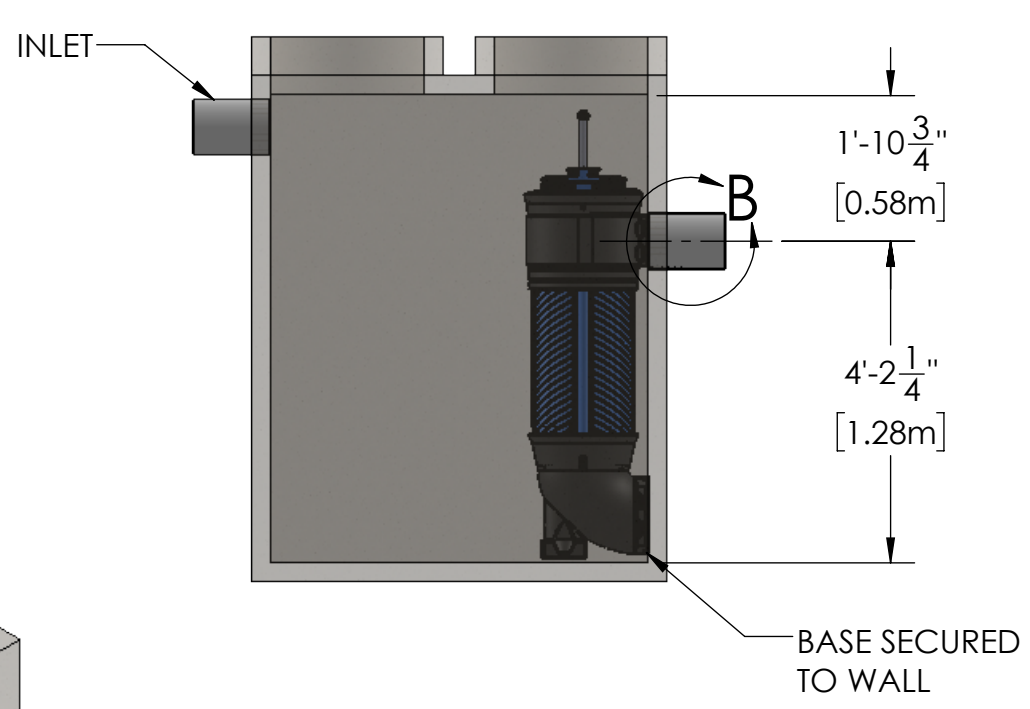
**MyFAST<sup>®</sup> 2.0 TANK DETAILS**

**Lid Access Requirements**  
detailed drawings available upon request



**Notes:**  
When tank is covered adequate ventilation will be required. Refer to the BASIC, AMS & Specification sheets for additional details.

<b>PROPRIETARY AND CONFIDENTIAL</b> THE INFORMATION CONTAINED IN THIS DRAWING IS THE SOLE PROPERTY OF BIO-MICROBICS, INC.. ANY REPRODUCTION IN PART OR AS A WHOLE WITHOUT THE WRITTEN PERMISSION OF BIO-MICROBICS, INC. IS PROHIBITED.		UNLESS OTHERWISE SPECIFIED DIMENSIONS ARE IN INCHES AND TOLERANCES ARE AS FOLLOWS X° ± 1° .X ± .50 .XX ± .25		 BETTER WATER. BETTER WORLD.	
DO NOT SCALE DRAWING		DRAWN BY: ESG		DESCRIPTION: TANK DETAILS	
SHEET 4 OF 7		DATE: 11/10/2023		PART NUMBER: MYFAST 2.0	
SCALE: 1:80		APPROVED BY: MSH		REV: -	
SIZE: B		APPROVED BY DATE: 11/10/2023			

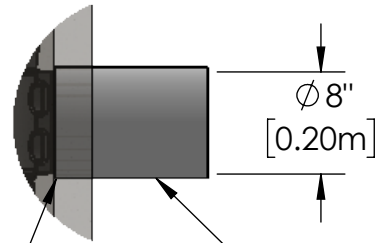


**NOTES:**

1. MyTEE® screens provide separation of non-biological solids and grit.
2. Each 1638 MyTEE® unit should be placed under a Ø 24" [0.61m] riser for proper operation of the internal and external swabs.
3. Tank inlet flow line must be at least 2" [5cm] above the emergency overflow outlet flow line. Emergency overflow must be sized to handle the designed peak flow event.
4. See table for required MyTEE® quantities and maximum tank volume.
5. Outlet pipe not included.
6. All appurtenances to MyTEE® (e.g. septic tank, access risers, etc.) must conform to all applicable codes.
7. See additional details in MyFAST® Installation Manual.


MyTEE® 1638 SCREEN			
MyFAST® MODEL	FLOW	MAXIMUM TANK VOLUMES	MyTEE® QUANTITY
2.0	20,000 GPD [76 M3/DAY]	(1) 2500 GAL [10M3] TANK	1
3.0	30,000 GPD [114 M3/DAY]	(1) 3750 GAL [14M3] TANK	2
4.0	40,000 GPD [150 M3/DAY]	(1) 5000 GAL [19M3] TANK	2
6.0	60,000 GPD [230 M3/DAY]	(1) 7500 GAL [28M3] TANK	3
8.0	80,000 GPD [300 M3/DAY]	(1) 10000 GAL [38M3] TANK	4
10.0	100,000 GPD [379 M3/DAY]	(1) 12500 GAL [47M3] TANK	5
12.0	120,000 GPD [454 M3/DAY]	(1) 15000 GAL [55M3] TANK	6
16.0	160,000 GPD [600 M3/DAY]	(1) 20000 GAL [75M3] TANK	8

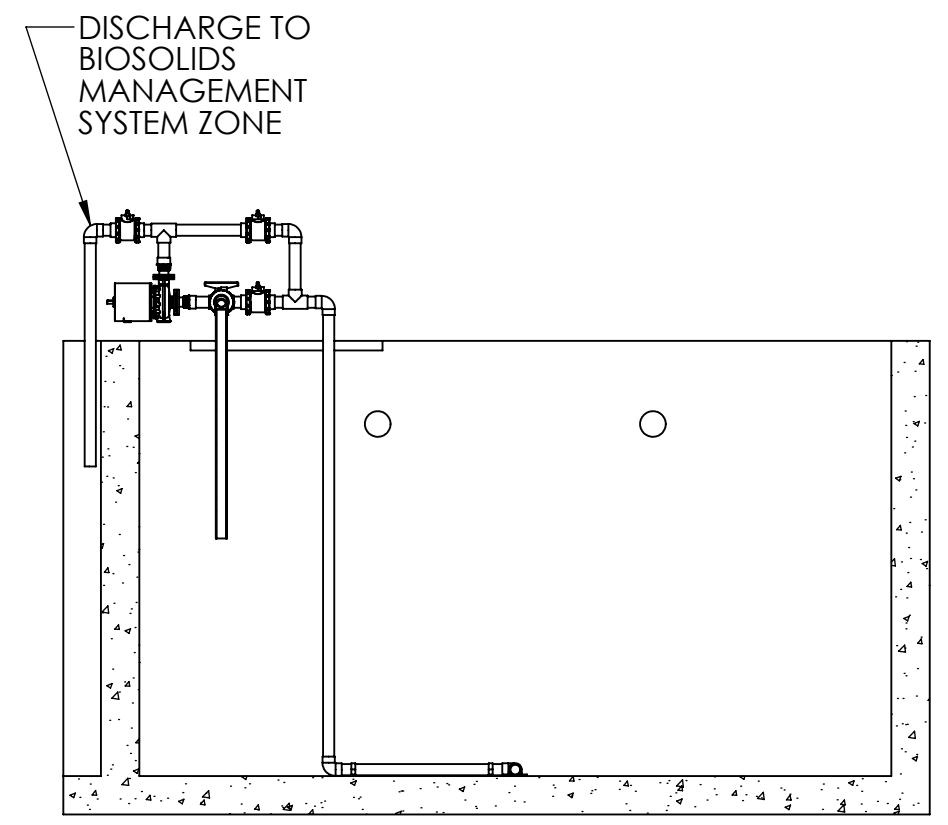
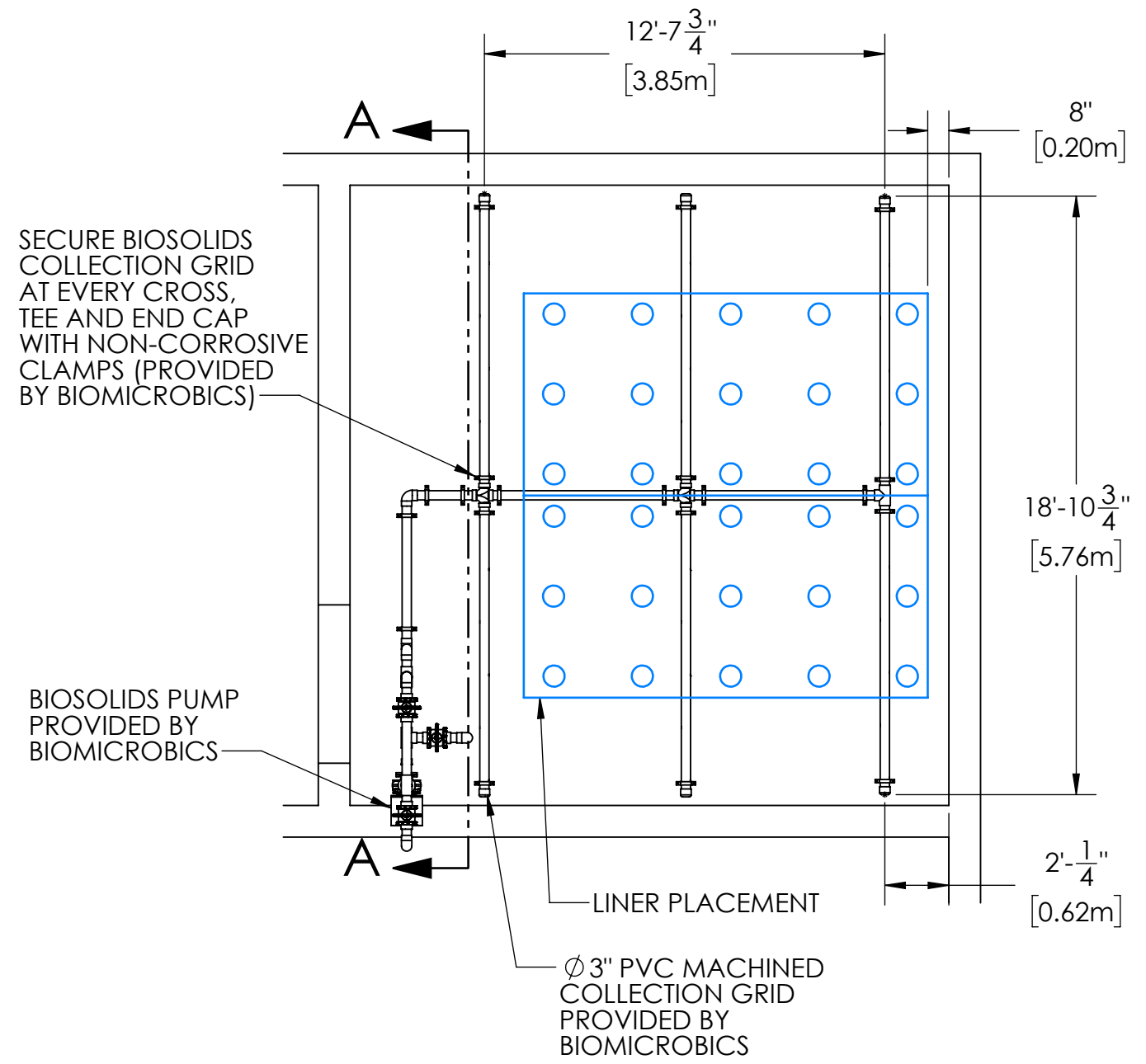
IF INSTALLED AS SHOWN IN A SINGLE COMPARTMENT TANK THE Ø 8" PVC PIPE MUST BE WATER TIGHT WITHIN THE TANK AND FLUSH AGAINST THE INSIDE TO MOUNT 16" MyTEE® BOTTOM DIVERTER



DETAIL B  
SCALE 1 : 15

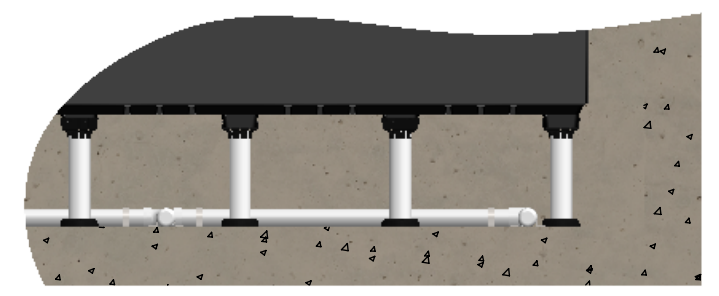
OUTLET  
OPTIONAL  
Ø 8" PVC PIPE PROVIDED BY OTHERS TO CONNECT OUTLET TO SECONDARY TANK

<small>PROPRIETARY AND CONFIDENTIAL</small> THE INFORMATION CONTAINED IN THIS DRAWING IS THE SOLE PROPERTY OF BIO-MICROBICS, INC.. ANY REPRODUCTION IN PART OR AS A WHOLE WITHOUT THE WRITTEN PERMISSION OF BIO-MICROBICS, INC. IS PROHIBITED.  DO NOT SCALE DRAWING	<small>UNLESS OTHERWISE SPECIFIED</small> DIMENSIONS ARE IN INCHES AND TOLERANCES ARE AS FOLLOWS X° ± 1° .X ± .50 .XX ± .25	 <small>BETTER WATER. BETTER WORLD.</small>
	DRAWN BY: <b>ESG</b>	
SHEET 5 OF 7	DATE: <b>11/10/2023</b>	PART NUMBER <b>MYFAST 2.0</b>
SCALE: <b>1:30</b>	SIZE: <b>B</b>	APPROVED BY: <b>MSH</b>
		APPROVED BY DATE: <b>11/10/2023</b>
		REV <b>-</b>



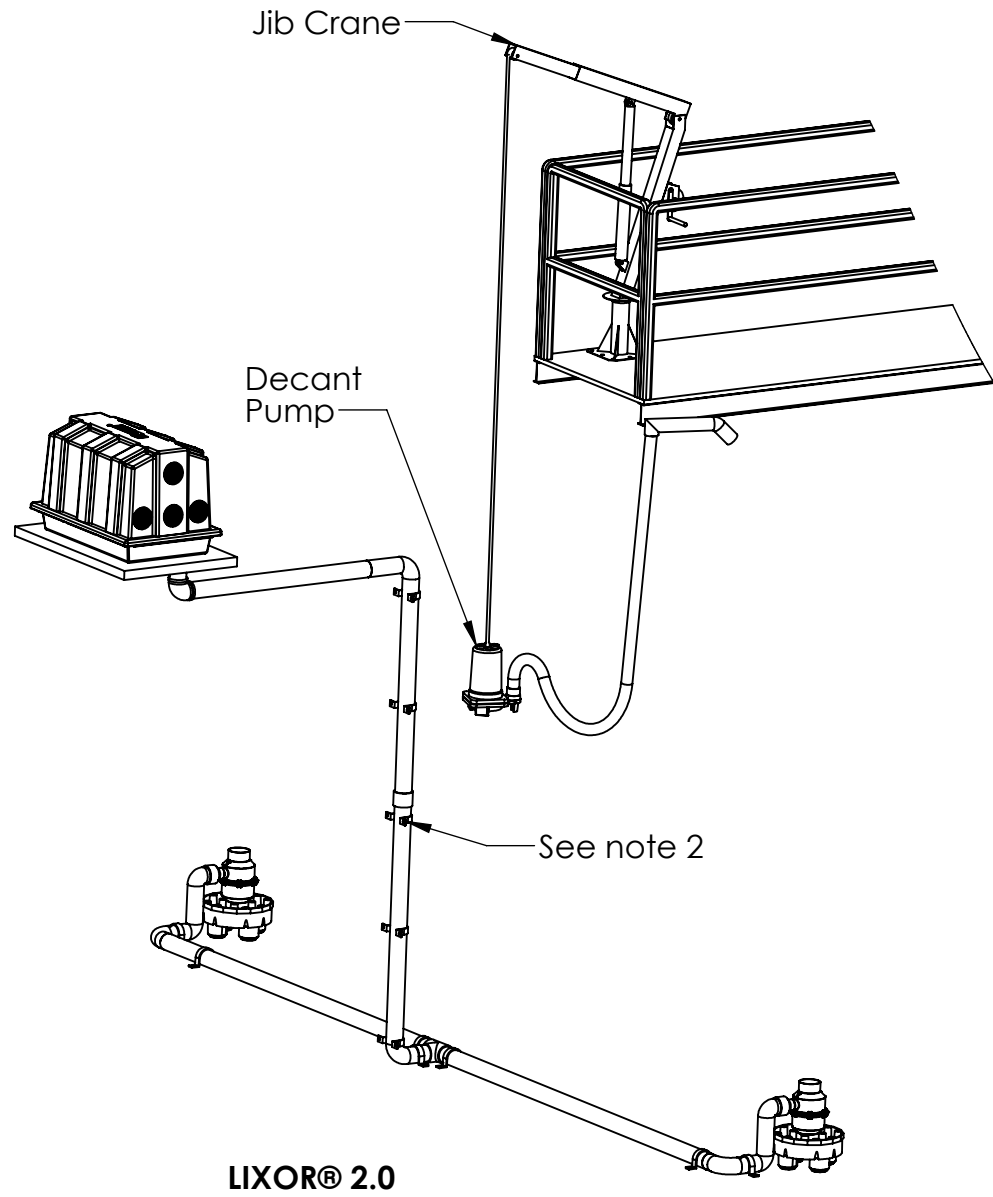
SECTION A-A  
SCALE 1 : 60

NOTE:  
ALL Ø 3" PVC PIPE SHOWN IN SECTION A-A WILL BE PROVIDED BY BIOMICROBICS

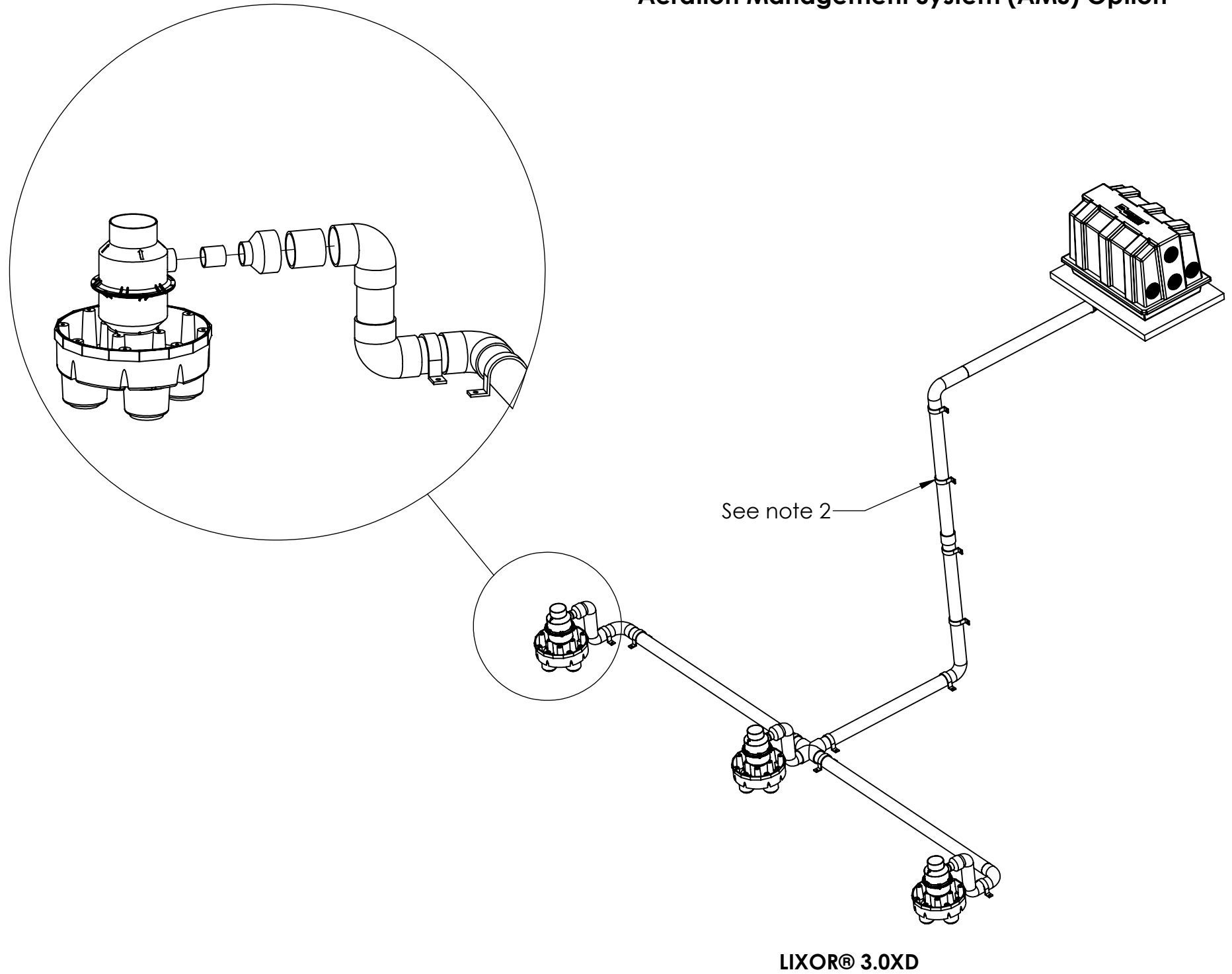


<p><b>PROPRIETARY AND CONFIDENTIAL</b> THE INFORMATION CONTAINED IN THIS DRAWING IS THE SOLE PROPERTY OF BIO-MICROBICS, INC., ANY REPRODUCTION IN PART OR AS A WHOLE WITHOUT THE WRITTEN PERMISSION OF BIO-MICROBICS, INC. IS PROHIBITED.</p> <p>DO NOT SCALE DRAWING</p>		<p>UNLESS OTHERWISE SPECIFIED DIMENSIONS ARE IN INCHES AND TOLERANCES ARE AS FOLLOWS X° ± 1° .X ± .50 .XX ± .25</p>	
<p>SHEET 6 OF 7</p>		<p>DRAWN BY: ESG DATE: 11/10/2023 APPROVED BY: MSH APPROVED BY DATE: 11/10/2023</p>	
<p>SCALE: 1:80</p>	<p>SIZE: B</p>	<p>PART NUMBER MYFAST 2.0</p>	<p>REV -</p>

### Biosolids Management System (BMS) Option




### Aeration Management System (AMS) Option



**NOTES:**

1. Blower piping to LIXOR® may not exceed 100 FT [30.5m] in total length and use a maximum of 6 elbows to get to the LIXOR air inlet. For distances greater than 100 FT [30.5m] - consult factory. Blower must be located above flood/standing water levels on a concrete base 42" X 28" X 2" [105 X 70 X 5cm] minimum.
2. The air supply line must be secured with a non-corrosive clamp every 2 FT [0.6m] minimum to prevent vibration induced damage.
3. Installation of the LIXOR® shall be done in accordance with the written instructions provided by the manufacturer. Refer to LIXOR® Installation Manual for more details.

<p><b>PROPRIETARY AND CONFIDENTIAL</b> THE INFORMATION CONTAINED IN THIS DRAWING IS THE SOLE PROPERTY OF BIO-MICROBICS, INC.. ANY REPRODUCTION IN PART OR AS A WHOLE WITHOUT THE WRITTEN PERMISSION OF BIO-MICROBICS, INC. IS PROHIBITED.</p> <p>DO NOT SCALE DRAWING</p>		<p>UNLESS OTHERWISE SPECIFIED DIMENSIONS ARE IN INCHES AND TOLERANCES ARE AS FOLLOWS</p> <p>X° ± 1° .X ± .50 .XX ± .25</p>			
		<p>DRAWN BY: ESG</p> <p>DATE: 11/10/2023</p>			
<p>SHEET 7 OF 7</p>		<p>APPROVED BY: MSH</p>		<p>PART NUMBER</p>	
<p>SCALE: 1:80</p>	<p>SIZE: B</p>	<p>APPROVED BY DATE: 11/10/2023</p>		<p>MYFAST 2.0</p>	<p>REV -</p>